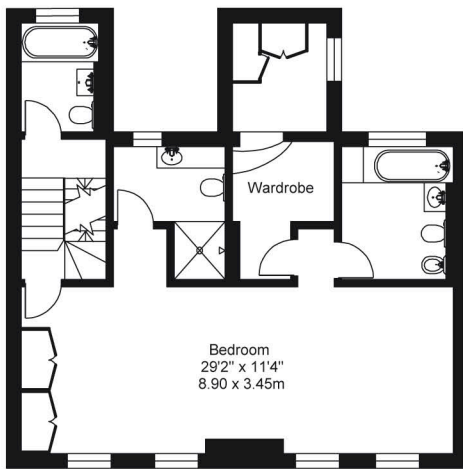
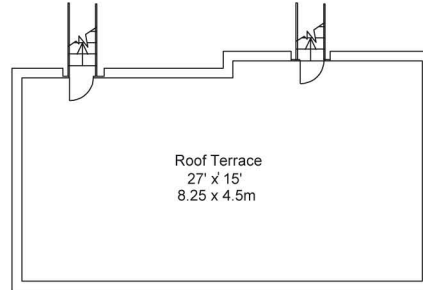
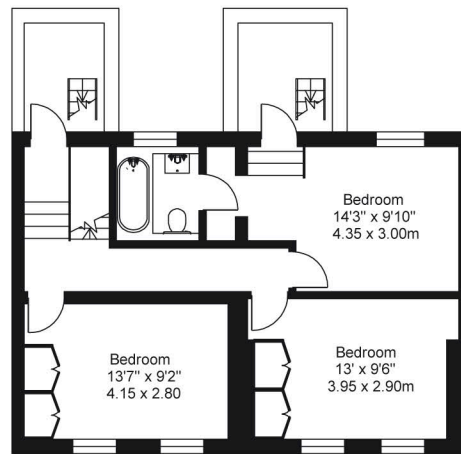


26 Montpelier Place Kingsbridge, London SW7

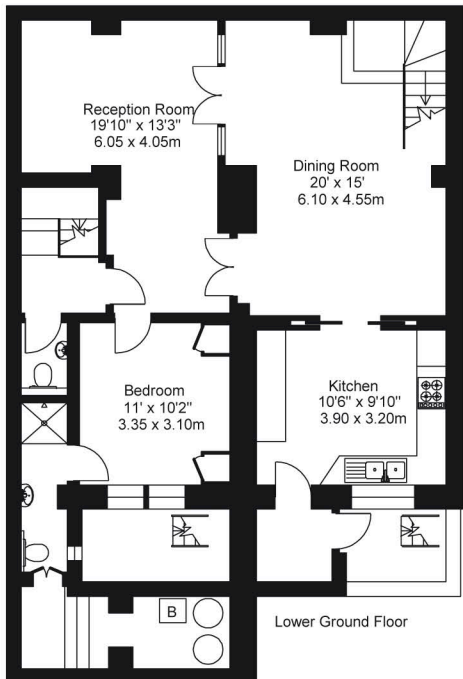
Approximate Gross Internal Floor Area
3,155 sq ft / 293 sq m



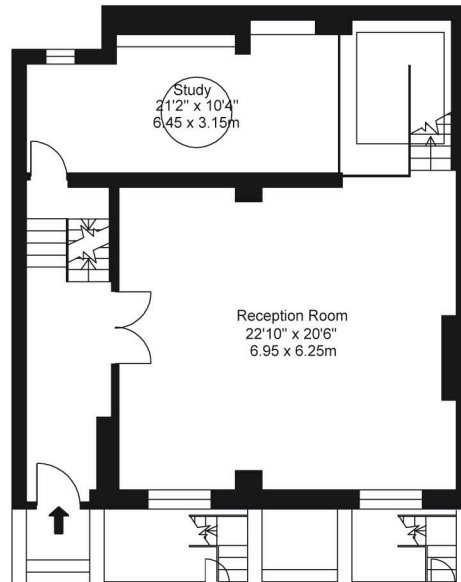
First Floor



Second Floor



Lower Ground Floor



Ground Floor

© CDP DESIGN LTD

ILLUSTRATION FOR IDENTIFICATION PURPOSES ONLY

ALL MEASUREMENTS ARE MAXIMUM, AND INCLUDE WINDOW BAYS AND WARDROBES WHERE APPLICABLE
THIS PLAN MUST NOT BE REPRODUCED BY ANY OTHER PERSON WITHOUT PERMISSION.