

PATTERSON BOWE

Rutland Street
KNIGHTSBRIDGE SW7







Rutland Street

KNIGHTSBRIDGE SW7

An immaculate 'Knightsbridge Village' house in one of its prettiest streets.

The house has been meticulously refurbished to a high standard and has the benefit of a terrace and a patio. Of particular note is the exceptional quality of the kitchen and bathrooms.

No. 9 Rutland Street is one of the larger houses in this very quiet street which is a short walk to Hyde Park and Harrods.

Accommodation

- Reception room
- Study
- Kitchen/dining room
- 3 Bedrooms
- Bathroom
- Shower room
- Cloakroom
- Terrace
- Patio
- Storage vault

Terms

Tenure Freehold

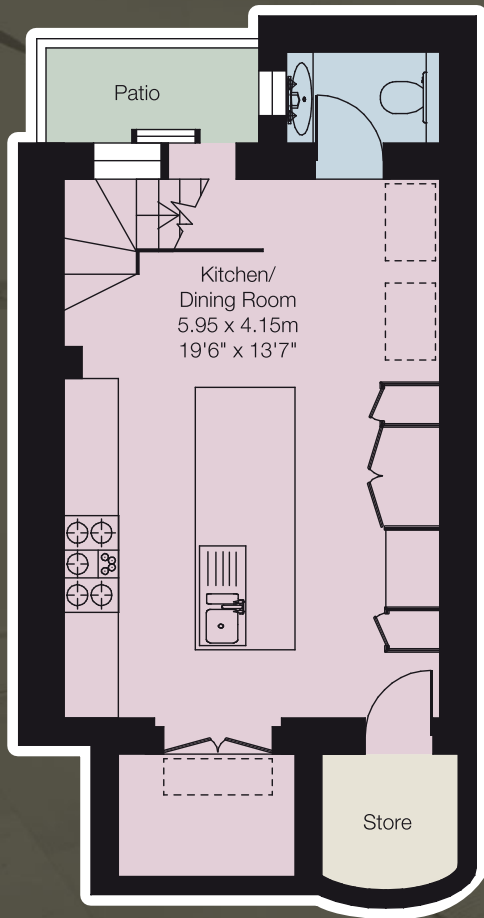
Local Authority The Royal Borough of Kensington and Chelsea

Price £2,350,000

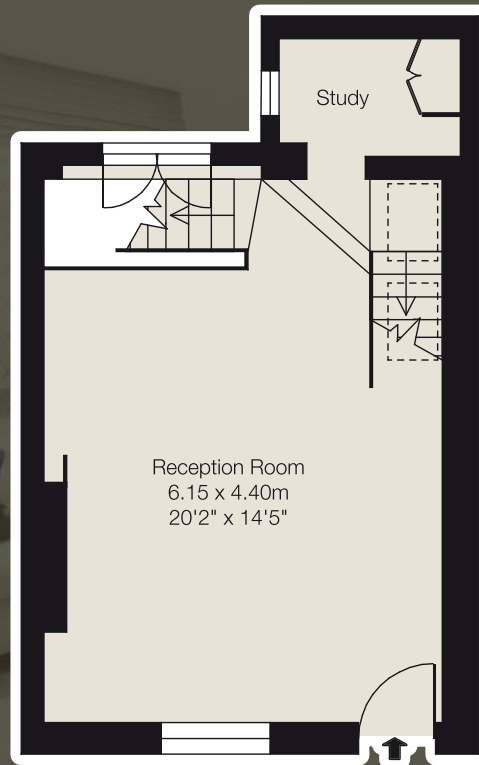
Sole Agent

PATTERSON BOWE

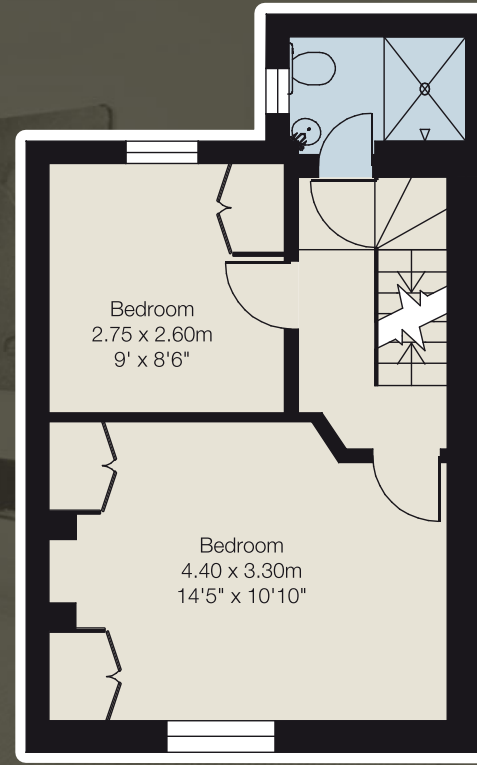
Approximate Gross Internal Area
1,256 sq feet / 116.6 sq metres



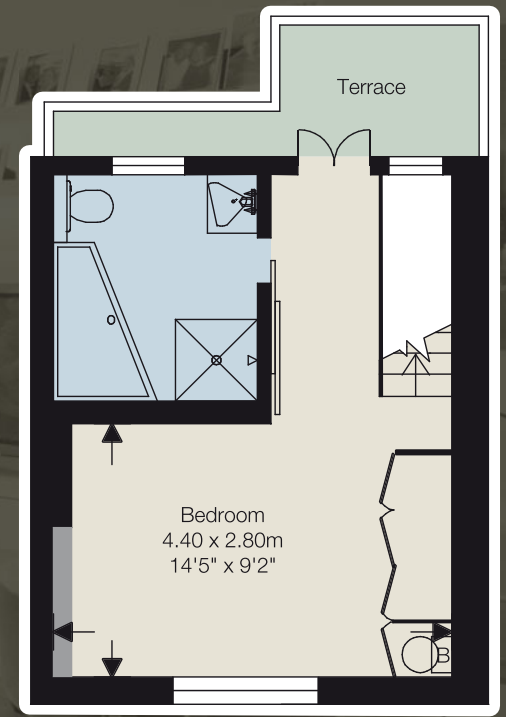
Lower Ground Floor



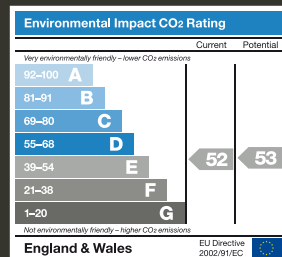
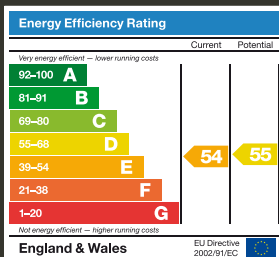
Ground Floor



First Floor



Second Floor



By appointment with Sole Agent

These particulars are for general information only and do not constitute any part of an offer or a contract. All statements contained herein are made without responsibility on the part of Patterson Bowe or the Vendors or Lessors, and are not to be relied on as statement or representation of fact. Intending purchasers or Lessees must satisfy themselves or otherwise as the correctness of each of the statements contained in these particulars. Patterson Bowe have not tested any of the appliances in this property. October 2012. CGP10962A-FL05L. Photography and brochure by cgpdesign.com 020 7222 7222

PATTERSON BOWE

020 7581 3253

49 Beauchamp Place, London SW3 1NY

www.pattersonbowe.co.uk