

# ROKSTONE



## Elgin Crescent, Notting Hill W11

This beautiful end of terrace house is one of only eight corner properties on Elgin Crescent and is the latest project from renowned developer Thornsett. Interior design by the award-winning Staffan Tollgård Design Group and architecture by Capital Architecture have seen the house completely remodelled and redesigned to exacting standards throughout. Arranged over six floors, this stunning family house offers wonderful open plan accommodation and excellent entertaining space with an abundance of natural light. With access to one of London's most prestigious private communal gardens this house has every desired requirement for the perfect London home.

The garden level boasts a spacious open plan kitchen/breakfast room with a central island and a conservatory leading onto a south facing patio area and steps directly up to the highly sought after Lansdowne/Elgin communal gardens. There is also a guest WC and a laundry room on this level with a separate entrance at the front of the house ideal for staff. The floor below houses a large cinema room, a fully fitted wine storage room and a shower room. The ground floor consists of a beautiful reception room with high ceilings and Cheville timber flooring with rear views out onto the pretty gardens and a balcony at the front onto the beautiful Crescent. The principal bedroom suite occupies the entire first floor and benefits from a fully fitted dressing room and a stunning marble bathroom. The second and third floors comprise four further double bedrooms all benefitting from fitted wardrobes and four bathrooms.

**Price £12,527,000**



5 Dorset Street London W1U 6QJ

Tel: 020 7580 2030 | Email: [enquiries@rokstone.com](mailto:enquiries@rokstone.com)

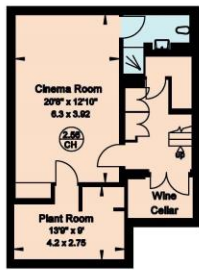
<http://www.rokstone.com>

# ROKSTONE

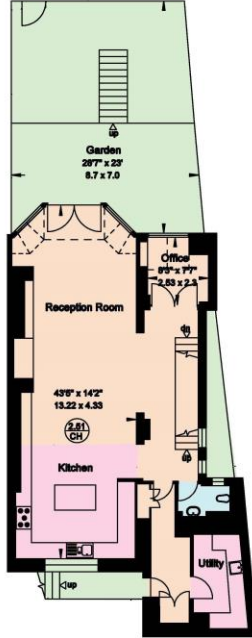
Elgin Crescent  
London W11

Gross Internal Area =  
381 sq. metres  
4102 sq. feet  
(Including Restricted Heights)

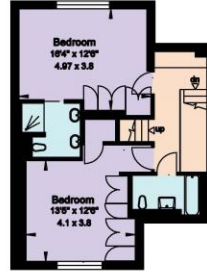
Gross Internal Area =  
378 sq. metres  
4068 sq. feet  
(Excluding Restricted Heights)



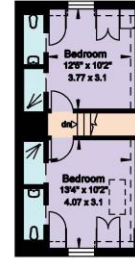
Basement



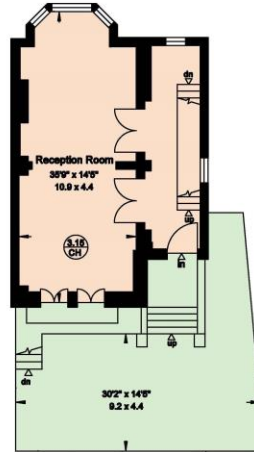
Lower Ground Floor



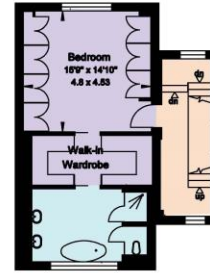
Second Floor



Third Floor

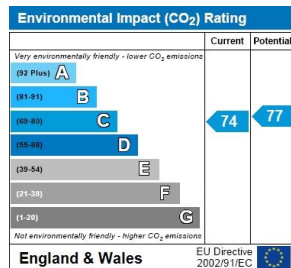
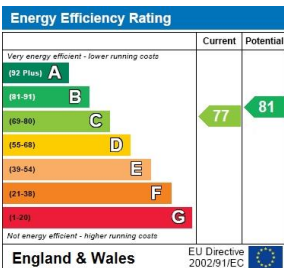


Ground Floor



First Floor

Produced by Planaid for identification purposes only, to illustrate the layout of the property and should not be considered as a scaled drawing.



## Terms

Local Authority: London Borough of Kensington and Chelsea

Tenure: Freehold

5 Dorset Street London W1U 6QJ

Tel: 020 7580 2030 | Email: enquiries@rokstone.com

http://www.rokstone.com