

INTRODUCING  
Landscape Farm, Le Chemin Des Moulins, St Helier, JE2 4ZR



Connecting People & Property Perfectly.

## - ONE OF JERSEY'S FINEST PRIVATE HOMES -

Set within parkland style grounds with feature lake, this magnificent newly constructed and very substantial family mansion, stands located on the South of the island, with ease of access to the capital town of St Helier, schools and to the airport. The mansion offers a superb range of magnificently appointed and elegantly proportioned family accommodation, interior designed by Henrietta Spencer-Churchill. There is a separate lodge providing 2 spacious self-contained 2 and 3 bedroom guest/staff accommodation together with generous garaging. Hard tennis court and swimming pool. The property enjoys a tranquil and private location approached via a long private gated driveway.

### -AN OUTSTANDING PRESTIGIOUS FAMILY HOME OF ULTIMATE QUALITY-

- Magnificent newly constructed mansion
- Offering ultimate standards throughout
- Private and tranquil setting
- Landscaped grounds with ornamental lake
- Stunning family accommodation
- Guest and staff accommodation

**Price £8,950,000** Qualified | Freehold



4



8



10



20

PROPERTY ID: 1705























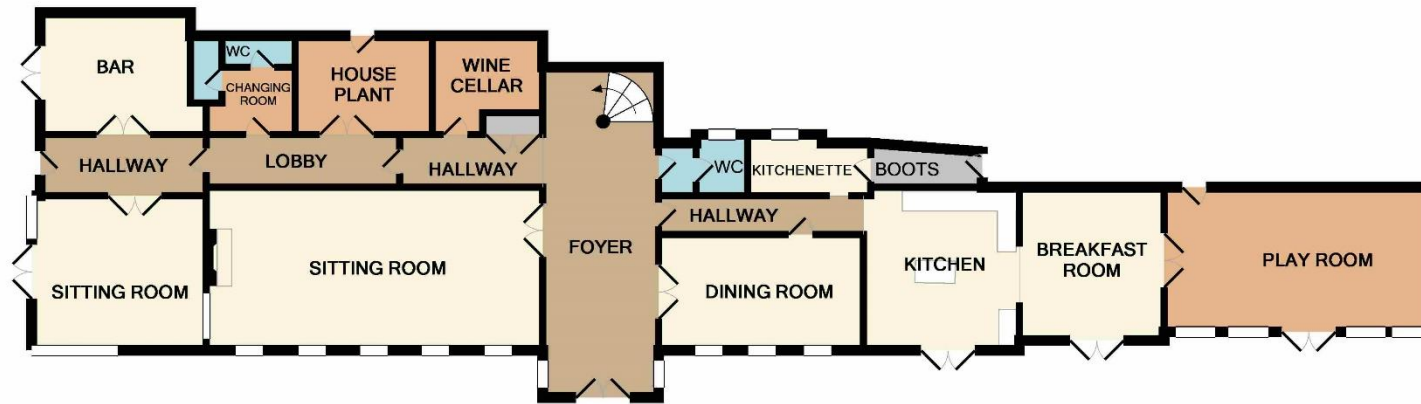




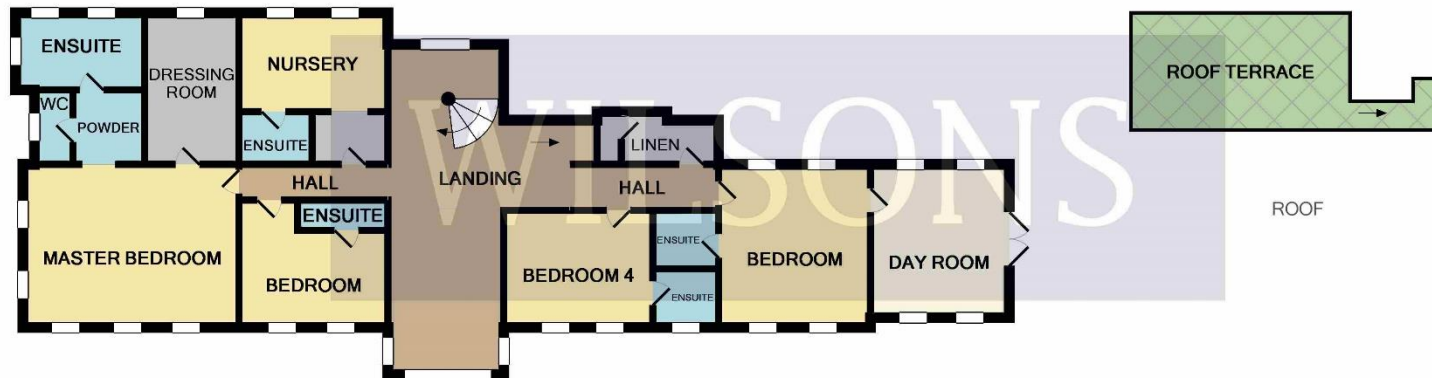




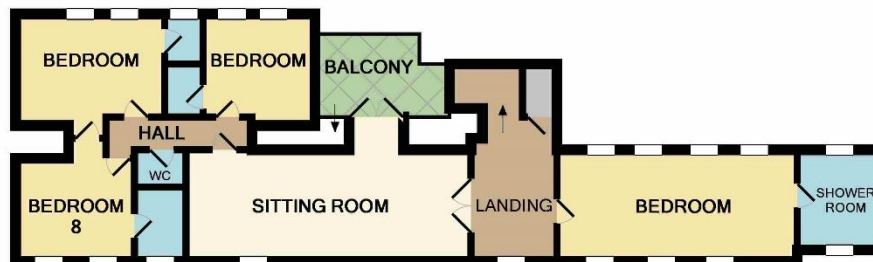




GROUND FLOOR



1ST FLOOR



2ND FLOOR

Whilst every attempt has been made to ensure the accuracy of the floor plan contained here, measurements of doors, windows, rooms and any other items are approximate and no responsibility is taken for any error, omission, or mis-statement. This plan is for illustrative purposes only and should be used as such by any prospective purchaser. The services, systems and appliances shown have not been tested and no guarantee as to their operability or efficiency can be given.  
Made with Metropix ©2018



#### ANTI MONEY LAUNDERING

Once an offer is accepted and negotiations for the purchase of a property are entered into, the prospective purchasers will be asked to produce photographic identification and proof of residency documentation, e.g. current utility bill. This is in order for us to comply with the current Money Laundering Legislation

#### VIEWING STRICTLY THROUGH WILSONS KNIGHT FRANK

These particulars, whilst believed to be accurate are set out as a general outline only for guidance and do not constitute any part of an offer or contract. Intending purchasers should not rely on them as statements or representation of fact, but must satisfy themselves by inspection or otherwise as to their accuracy. No person in this firm's employment has the authority to make or give any representation or warranty in respect of the property.

Call: +44 (0) 1534 877977  
Email: [office@wilsons.je](mailto:office@wilsons.je)

**WILSONS** |  **Knight Frank**

[wilsons.je](https://wilsons.je)

