

50 Netherfield Road, Dewsbury, WF13 3JY



Price £420,000

Adams Estates are pleased to offer this modern commercial unit currently used as offices. The property is split over 3 floors. The ground floor and first floor have previously been used as an open plan office and the second floor has been used as a conference/meeting room.

- Good Quality Office Building
- Suitable for a variety of uses
- Accessible location



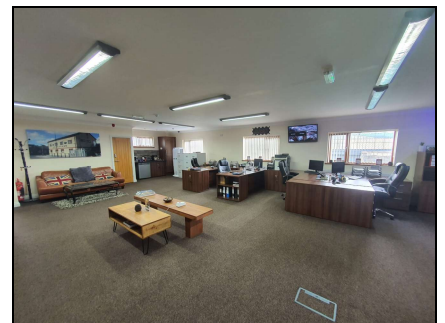
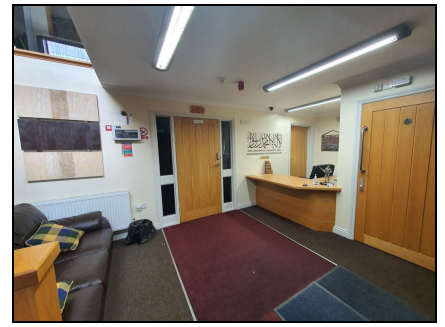
Adams Estates are pleased to offer this modern commercial unit currently used as offices. The property is split over 3 floors. The ground floor and first floor have previously been used as an open plan office and the second floor has been used as a conference/meeting room. The property is suitable for a variety of uses, including professional services, beauty, leisure, medical uses, subject to planning. The premises are vacant and are immediately available for occupation

DESCRIPTION

The office accommodation on each floor extends to:

Ground Floor 1,200 ft²,
First Floor 1,980 ft²,
Second Floor 702 ft²,

having gas fired central heating, double glazed window units, modern specification lighting and the benefit of CCTV burglar alarm and fire alarm system installed. There is on-street car parking available in close proximity.



Floor Plan

EPC

