

29 Balmoral Road, E10

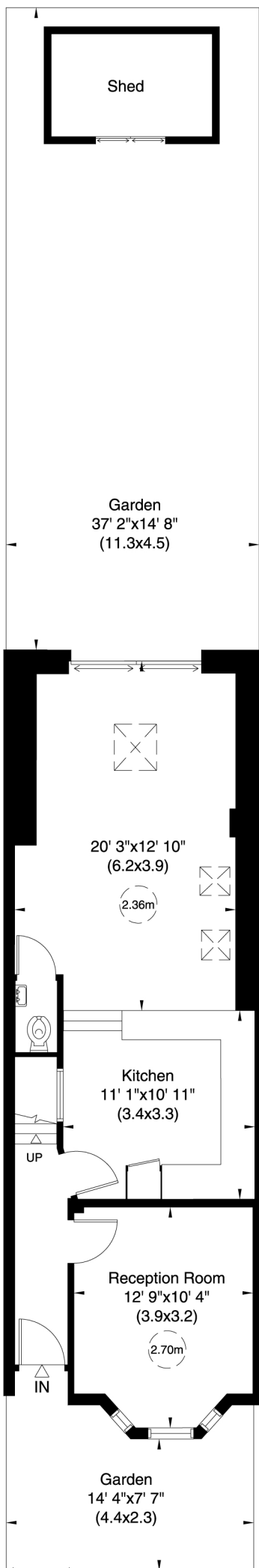
Gross internal area (approx.)

116 Sq m (1252 Sq ft) Including Under 1.5m

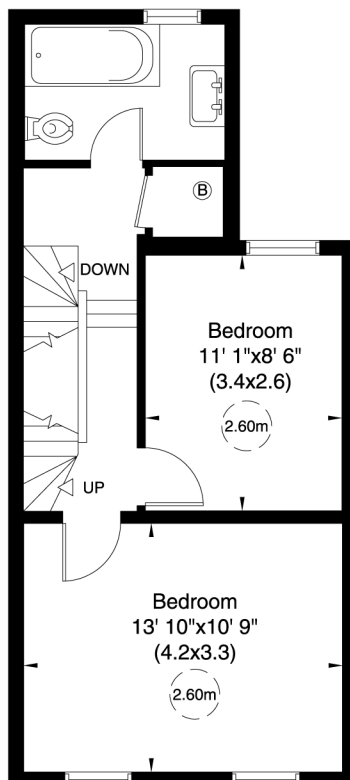
112 Sq m (1211 Sq ft) Excluding Under 1.5m

For identification only, Not to Scale

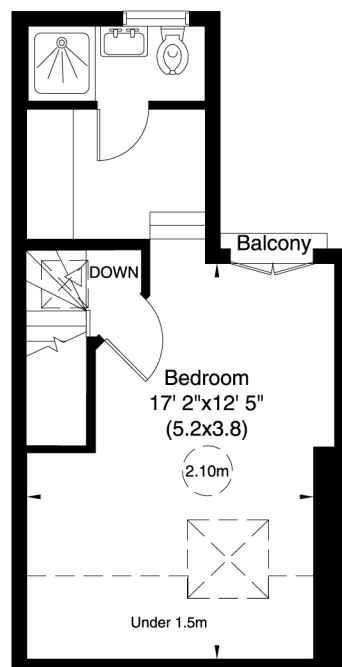
capital 020 8671 7722



Ground Floor



First Floor



Second Floor

Not to scale, for guidance only and must not be relied upon as a statement of fact. All measurements and areas are approximate only (and have been prepared in accordance with the current edition of the RICS Code of Measuring Practice).