



Ennismore Mews, Knightsbridge SW7

ASHDOWN MARKS
PROPERTY CONSULTANTS

Ennismore Mews, SW7

Situated in this quintessentially English cobbled mews, this charming family home, arranged over only three floors, has been newly painted both inside and out. The property benefits from being located in an unusually quiet area whilst being minutes walk to both the hustle and bustle of Knightsbridge to the south and the leafy views and walks of Hyde Park to the north.

Comprising three bedrooms, this house offers fantastic entertaining space with a reception room in excess of 400 sq.ft, a separate kitchen and balcony off the master bedroom.

The property is 0.5 miles from Knightsbridge underground station (Piccadilly line) and 0.6 miles from South Kensington underground station (Circle, District and Piccadilly lines).

- Three bedrooms
- Two bathrooms
- Reception room
- Separate kitchen
- Newly painted throughout
- Knightsbridge location
- Mews house
- EPC: Band D

Price £1,269 pw

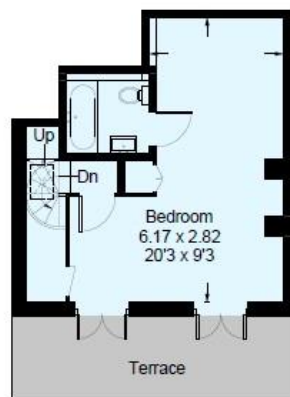
Unfurnished



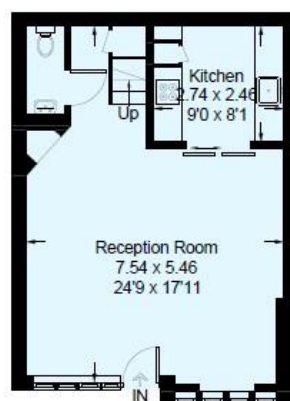


Ennismore Mews, SW7

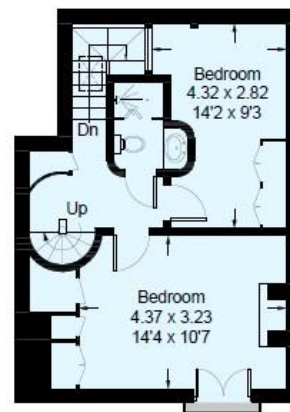
Approximate Gross Internal Area = 110.5 sq m / 1189 sq ft



Second Floor



Ground Floor



First Floor

This plan is for layout guidance only. Not drawn to scale unless stated. Windows and door openings are approximate. Whilst every care is taken in the preparation of this plan, please check all dimensions, shapes and compass bearings before making any decisions reliant upon them. (ID308964)

Important notice: Ashdown Marks, their clients and any joint agents give notice that: 1: They are not authorised to make or give any representations or warranties in relation to the property either here or elsewhere, either on their own behalf or on behalf of their client or otherwise. They assume no responsibility for any statement that may be made in these particulars. These particulars do not form part of any offer or contract and must not be relied upon as statements or representations of fact. 2: Any areas, measurements or distances are approximate. The text, photographs and plans are for guidance only and are not necessarily comprehensive. It should not be assumed that the property has all necessary planning, building regulation or other consents and Ashdown Marks have not tested any services, equipment or facilities. Purchasers must satisfy themselves by inspection or otherwise.

9 Milner Street, London, SW3 2QB

Tel: 020 7589 3353

www.ashdownmarks.co.uk

ASHDOWN MARKS
PROPERTY CONSULTANTS