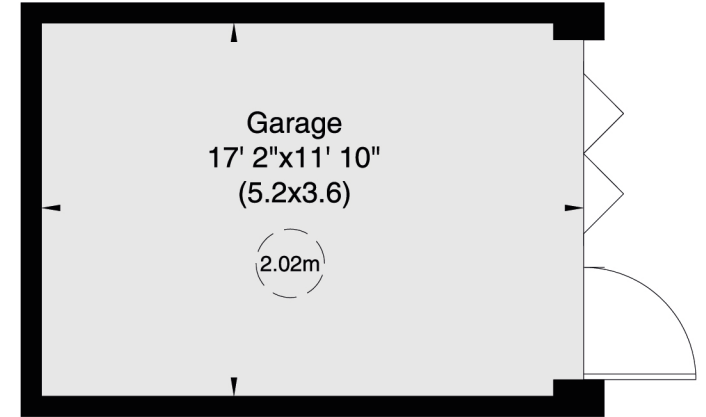


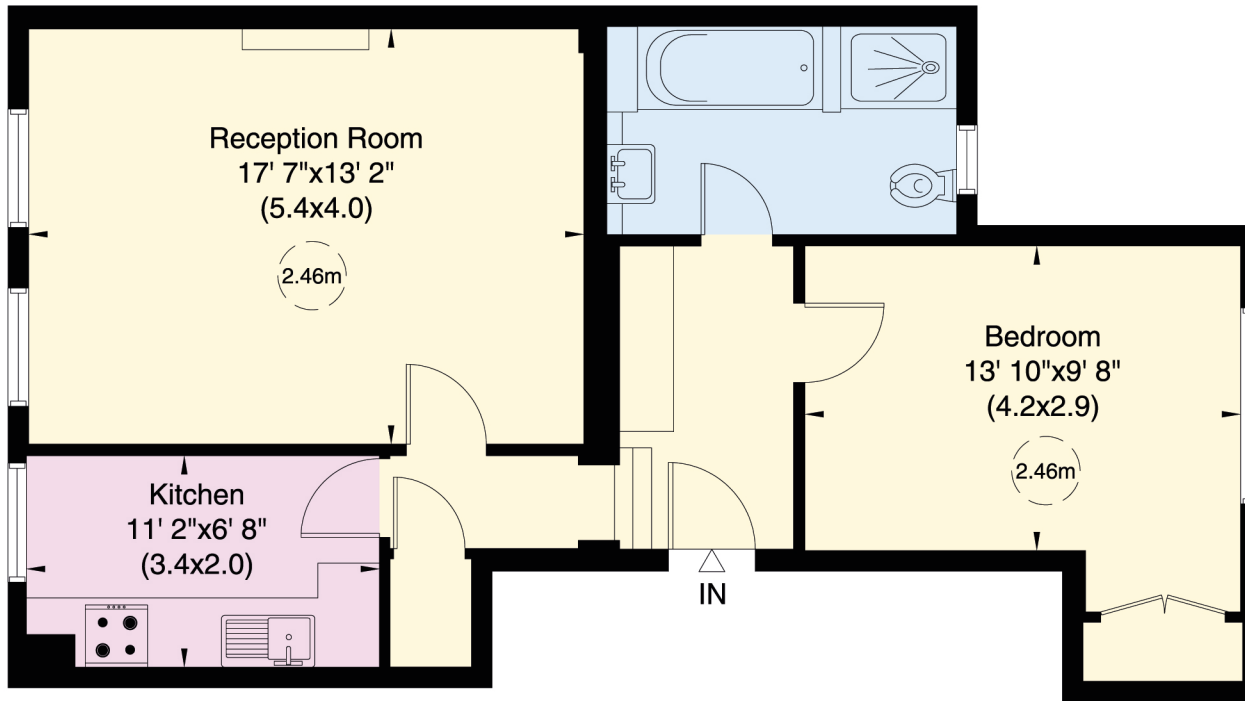
Egerton Crescent, SW3

Approximate Gross Internal Area
79 sq m/ 846 sq ft Including Garage
60 sq m/ 645 sq ft Excluding Garage

Not to Scale, for identification only



Ground Floor



Third Floor

For guidance only and must not be relied upon as a statement of fact.

All measurements and areas are approximate only (and have been prepared in accordance with the current edition of the RICS Code of Measuring Practice).

