



Britten Street, Chelsea SW3

ASHDOWN MARKS  
PROPERTY CONSULTANTS

## Britten Street, Chelsea SW3

A furnished one flat on the second floor (lift and porter) of this well located secure building in the heart of Chelsea. Quietly situated yet only a short walk to the King`s Road with an excellent variety of shopping and transport facilities and St. Luke`s Church and gardens.

Accommodation comprises:-

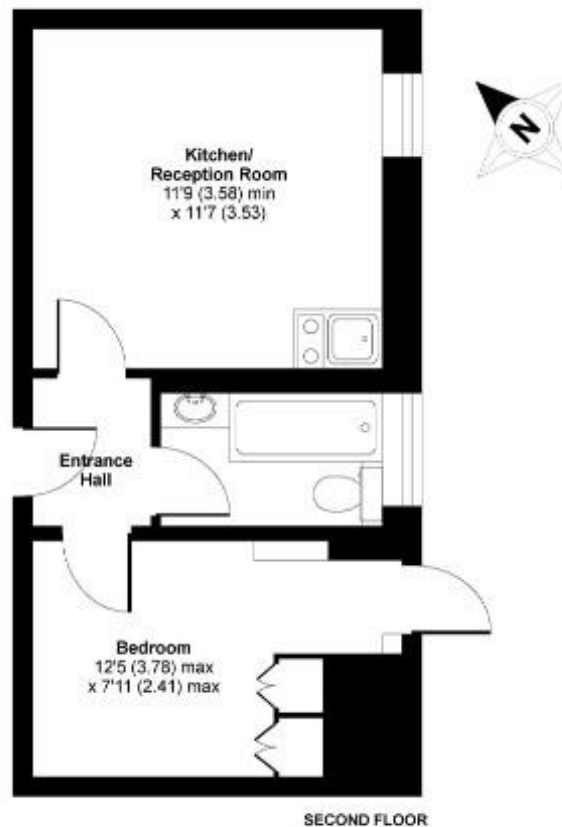
Reception, double bedroom with fitted wardrobes, open plan kitchen, bathroom, heating & hot water included, lift and portorage.

- Bedroom
- Bathroom
- Communal Heating & Hot Water
- Lift
- Porter
- Furnished
- EPC - Rating C
- Council Tax - Band D

Price £550 pw

Furnished





**GROSS INTERNAL AREA 299 SQFT 27.7 SQM**

Important notice: Ashdown Marks, their clients and any joint agents give notice that: 1: They are not authorised to make or give any representations or warranties in relation to the property either here or elsewhere, either on their own behalf or on behalf of their client or otherwise. They assume no responsibility for any statement that may be made in these particulars. These particulars do not form part of any offer or contract and must not be relied upon as statements or representations of fact. 2: Any areas, measurements or distances are approximate. The text, photographs and plans are for guidance only and are not necessarily comprehensive. It should not be assumed that the property has all necessary planning, building regulation or other consents and Ashdown Marks have not tested any services, equipment or facilities. Purchasers must satisfy themselves by inspection or otherwise.

**9 Milner Street, London, SW3 2QB**

**Tel: +44 (0)20 7589 3353**

**[www.ashdownmarks.co.uk](http://www.ashdownmarks.co.uk)**

**ASHDOWN MARKS**  
PROPERTY CONSULTANTS