

Bovingdon Road, SW6

Approximate Gross Internal Area

214.5 sq m / 2307 sq ft


(Including Reduced Headroom)

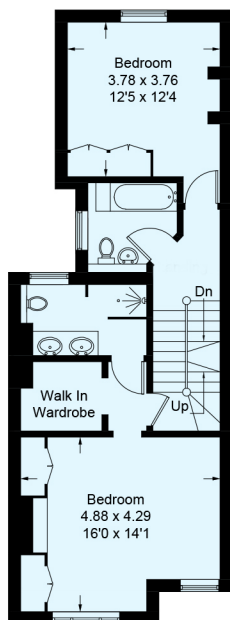
Approximate Gross Internal Area

212.9 sq m / 2290 sq ft

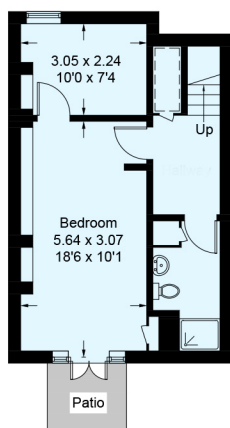
(Excluding Reduced Headroom)



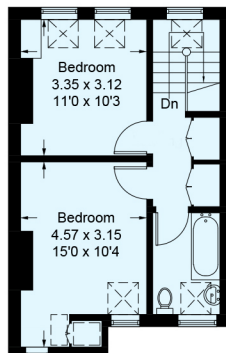
 = Reduced headroom below 1.5m / 5'0"



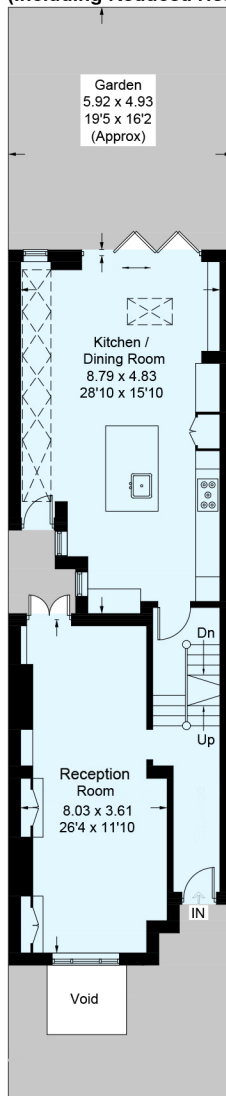
First Floor
60.9 sq m / 655 sq ft



Lower Ground Floor
38.6 sq m / 415 sq ft
(Including Reduced Headroom)



Second Floor
37.1 sq m / 399 sq ft
(Including Reduced Headroom)



Ground Floor
77.9 sq m / 838 sq ft

This plan is for layout guidance only. Not drawn to scale unless stated. Windows and door openings are approximate. Whilst every care is taken in the preparation of this plan, please check all dimensions, shapes and compass bearings before making any decisions reliant upon them. (ID352856)