



Ormonde Gate, Chelsea SW3

ASHDOWN MARKS  
PROPERTY CONSULTANTS



## Ormonde Gate, Chelsea SW3

A stunning, well proportioned one bedroom flat benefiting from good ceiling height (3.17m) and open views over Burton's Court.

The flat is situated on the second floor and features a generous entrance hall with guest cloakroom, large drawing room and a kitchen/breakfast room.

- 5m x 6m Drawing Room
- Kitchen/Breakfast Room
- Double Bedroom with En Suite Bathroom
- Guest Cloakroom
- 3.17m Ceiling Height
- Basement storeroom
- Views over Burton's Court
- Caretaker
- EPC: Rating C, Council Tax: Band G

Lease: Expires 26<sup>th</sup> September 2135

therefore approx. 112 years remaining

Service Charge: £4,361 p.a for year ending  
31<sup>st</sup> March 2023, reviewed annually.

Guide Price      £1,995,000



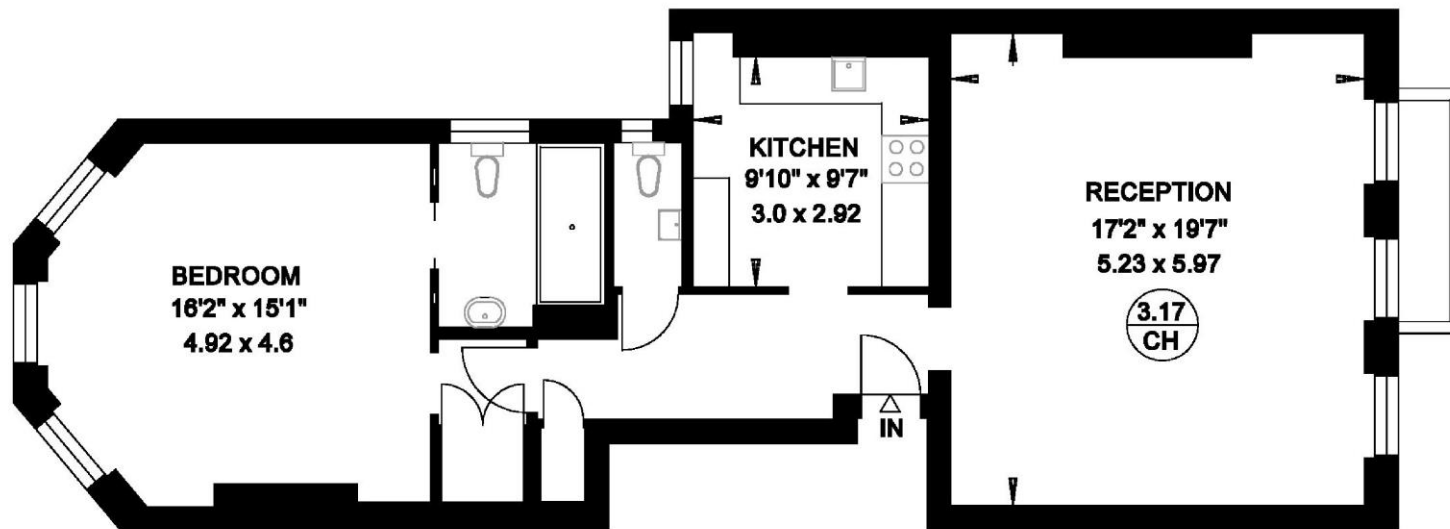






**ORMONDE GATE  
LONDON SW3**

**Gross Internal Area = 81.8 sq. metres  
881 sq. feet**



**SECOND FLOOR**

Important notice: Ashdown Marks, their clients and any joint agents give notice that: 1: They are not authorised to make or give any representations or warranties in relation to the property either here or elsewhere, either on their own behalf or on behalf of their client or otherwise. They assume no responsibility for any statement that may be made in these particulars. These particulars do not form part of any offer or contract and must not be relied upon as statements or representations of fact. 2: Any areas, measurements or distances are approximate. The text, photographs and plans are for guidance only and are not necessarily comprehensive. It should not be assumed that the property has all necessary planning, building regulation or other consents and Ashdown Marks have not tested any services, equipment or facilities. Purchasers must satisfy themselves by inspection or otherwise.

**9 Milner Street, London, SW3 2QB**

**Tel: 020 7589 3353**

**[www.ashdownmarks.co.uk](http://www.ashdownmarks.co.uk)**

**ASHDOWN MARKS**  
PROPERTY CONSULTANTS