



Edith Grove, Chelsea SW10

ASHDOWN MARKS
PROPERTY CONSULTANTS

Edith Grove

Chelsea, SW10

The property features a high ceilinged west facing reception room with two double bedrooms quietly situated to the rear and benefits from good natural light and plenty of storage.

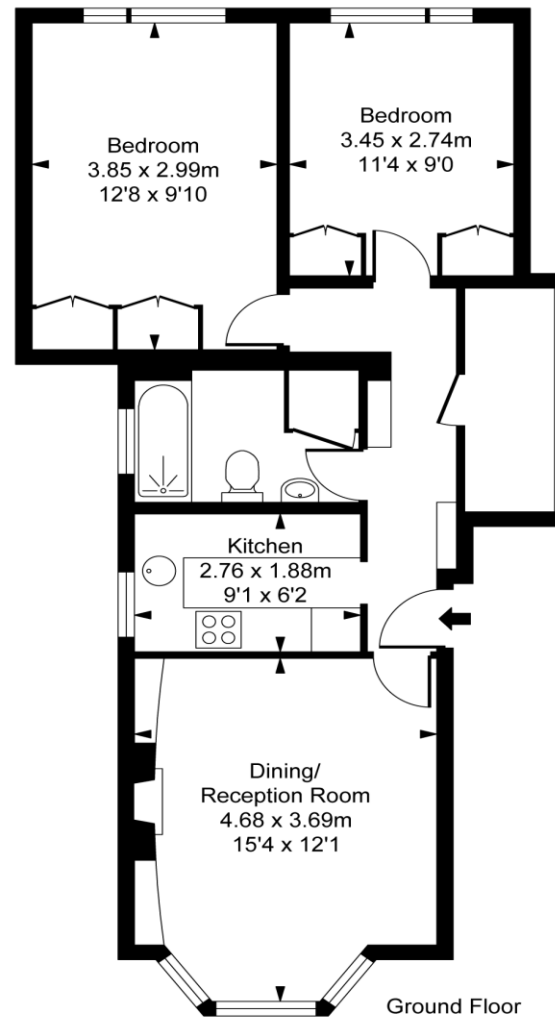
Edith Grove is a tree-lined street which runs between the Fulham Road and King's Road with excellent amenities close to hand.

- Entrance Hall
- Reception Room
- Kitchen
- Two Double Bedrooms
- Bathroom
- Gas Fired Central Heating
- Lease: 140 years plus Share of Freehold
- EPC: Band D
- 661 sq.ft / 61 sq.m

Guide Price £645,000



Edith Grove, SW10
Approximate Gross Internal Area
61.44 sq m / 661 sq ft



This plan is not to scale. It is for guidance and not for valuation purposes.
All measurements and areas are approximate only, and have been prepared in accordance with the current edition of the RICS Code of Measuring Practice.
© Fulham Performance

Important notice: Ashdown Marks, their clients and any joint agents give notice that: 1: They are not authorised to make or give any representations or warranties in relation to the property either here or elsewhere, either on their own behalf or on behalf of their client or otherwise. They assume no responsibility for any statement that may be made in these particulars. These particulars do not form part of any offer or contract and must not be relied upon as statements or representations of fact. 2: Any areas, measurements or distances are approximate. The text, photographs and plans are for guidance only and are not necessarily comprehensive. It should not be assumed that the property has all necessary planning, building regulation or other consents and Ashdown Marks have not tested any services, equipment or facilities. Purchasers must satisfy themselves by inspection or otherwise.

9 Milner Street, London, SW3 2QB

Tel: +44 (0)20 7589 3353

www.ashdownmarks.co.uk

ASHDOWN MARKS
PROPERTY CONSULTANTS