



Cheyne Place, Chelsea SW3

ASHDOWN MARKS
PROPERTY CONSULTANTS

Cheyne Place

Chelsea, SW3 4HJ

An immaculate one bedroom apartment situated on the 6th floor (with lift) enjoying fantastic views of the London Skyline.

The flat benefits from lots of natural light and is available furnished in a modern contemporary style.

- Double Bedroom
- Reception Room
- Bathroom
- Separate Kitchen
- Lift
- Wonderful Views
- EPC - Rating C
- Council Tax - Band E

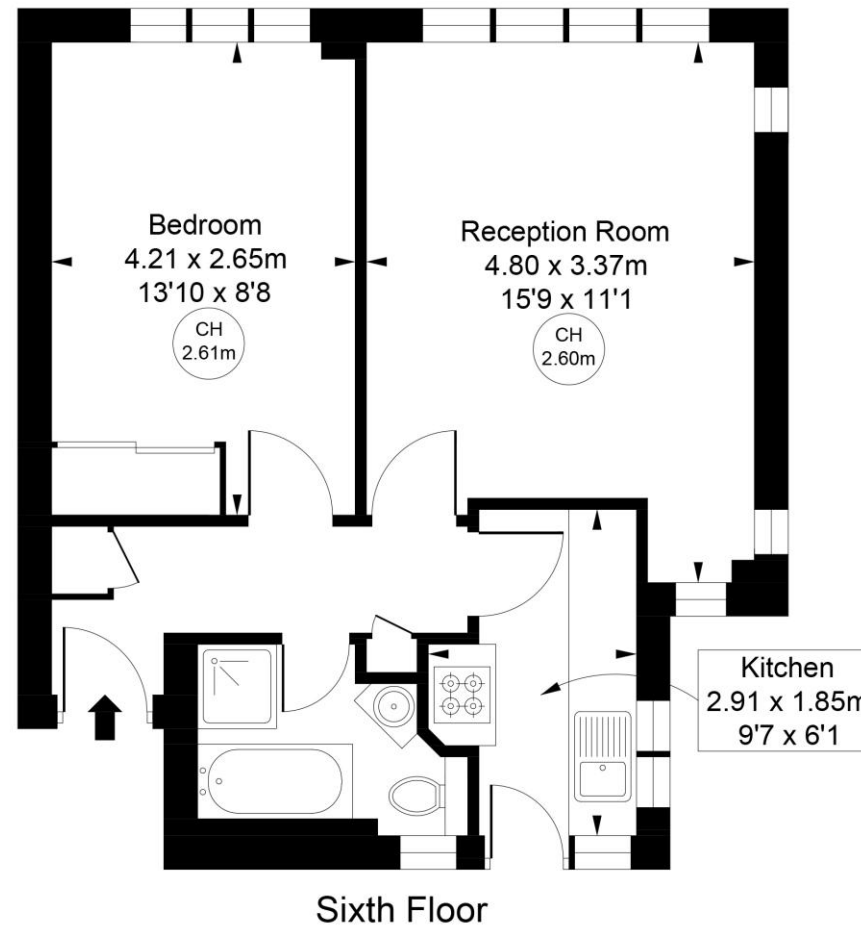
Furnished

Price: £623 pw





Cheyne Place, SW3
Approximate Gross Internal Area
40.35 sq m / 434 sq ft
(CH = Ceiling Heights)



This plan is not to scale. It is for guidance and not for valuation purposes.
All measurements and areas are approximate only, and have been prepared in accordance with the current edition of the RICS Code of Measuring Practice.

Important notice: Ashdown Marks, their clients and any joint agents give notice that: 1: They are not authorised to make or give any representations or warranties in relation to the property either here or elsewhere, either on their own behalf or on behalf of their client or otherwise. They assume no responsibility for any statement that may be made in these particulars. These particulars do not form part of any offer or contract and must not be relied upon as statements or representations of fact. 2: Any areas, measurements or distances are approximate. The text, photographs and plans are for guidance only and are not necessarily comprehensive. It should not be assumed that the property has all necessary planning, building regulation or other consents and Ashdown Marks have not tested any services, equipment or facilities. Purchasers must satisfy themselves by inspection or otherwise.

9 Milner Street, London, SW3 2QB

Tel: 020 7589 3353

www.ashdownmarks.co.uk

ASHDOWN MARKS
PROPERTY CONSULTANTS