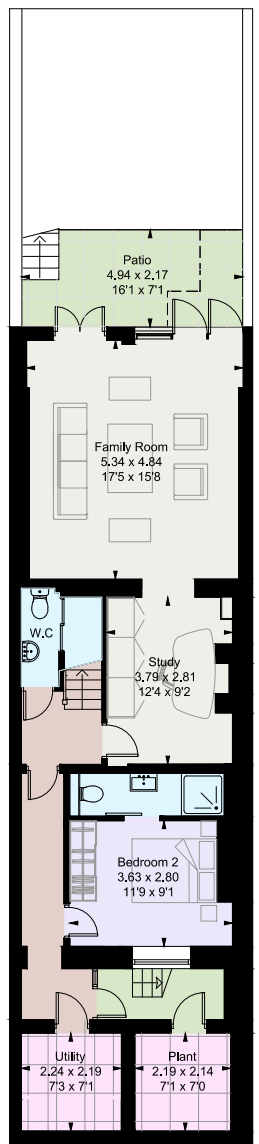




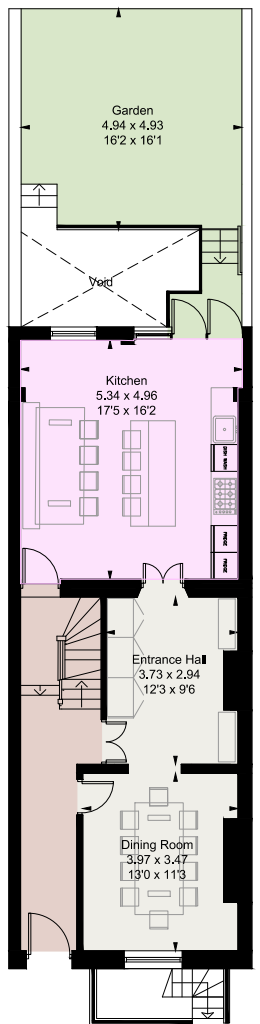
Eaton Terrace, SW1W
Newly refurbished 4 bed freehold house (2700 sq ft) by local developer PVG Design
West facing garden and large first floor terrace off reception
Air conditioning, bespoke oak kitchen, Gaggenau appliances
Arabescato and Carrera marble slabs, light oak wide-plank floor
Separate laundry and plant

72 Eaton Terrace, London, SW1W 8TZ

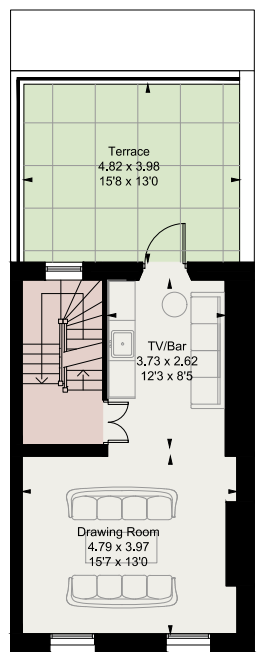
Approximate Gross Internal Area = 250.7 sq m / 2699 sq ft



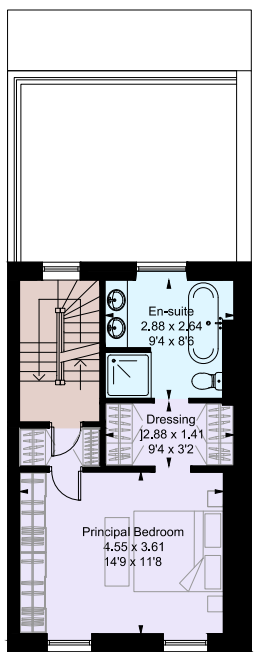
LOWER GROUND FLOOR



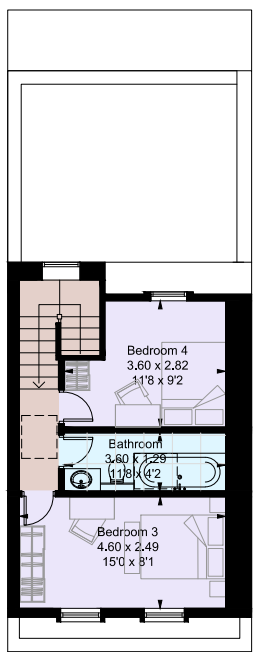
GROUND FLOOR



FIRST FLOOR



SECOND FLOOR



THIRD FLOOR































