



Milner Street, Chelsea SW3

ASHDOWN MARKS  
PROPERTY CONSULTANTS



## Milner Street, Chelsea, SW3

A beautifully presented four bedroom Victorian period house featuring an attractive family room with 3.5m ceiling height, a large kitchen /dining room and superb bespoke joinery throughout.

Milner Street runs off Cadogan Square and forms part of this popular residential area which includes Moore Street, Halsey Street and the smaller Victorian houses of First Street, Hasker Street and Ovington Street. The excellent facilities of Sloane Square and South Kensington are close to hand.

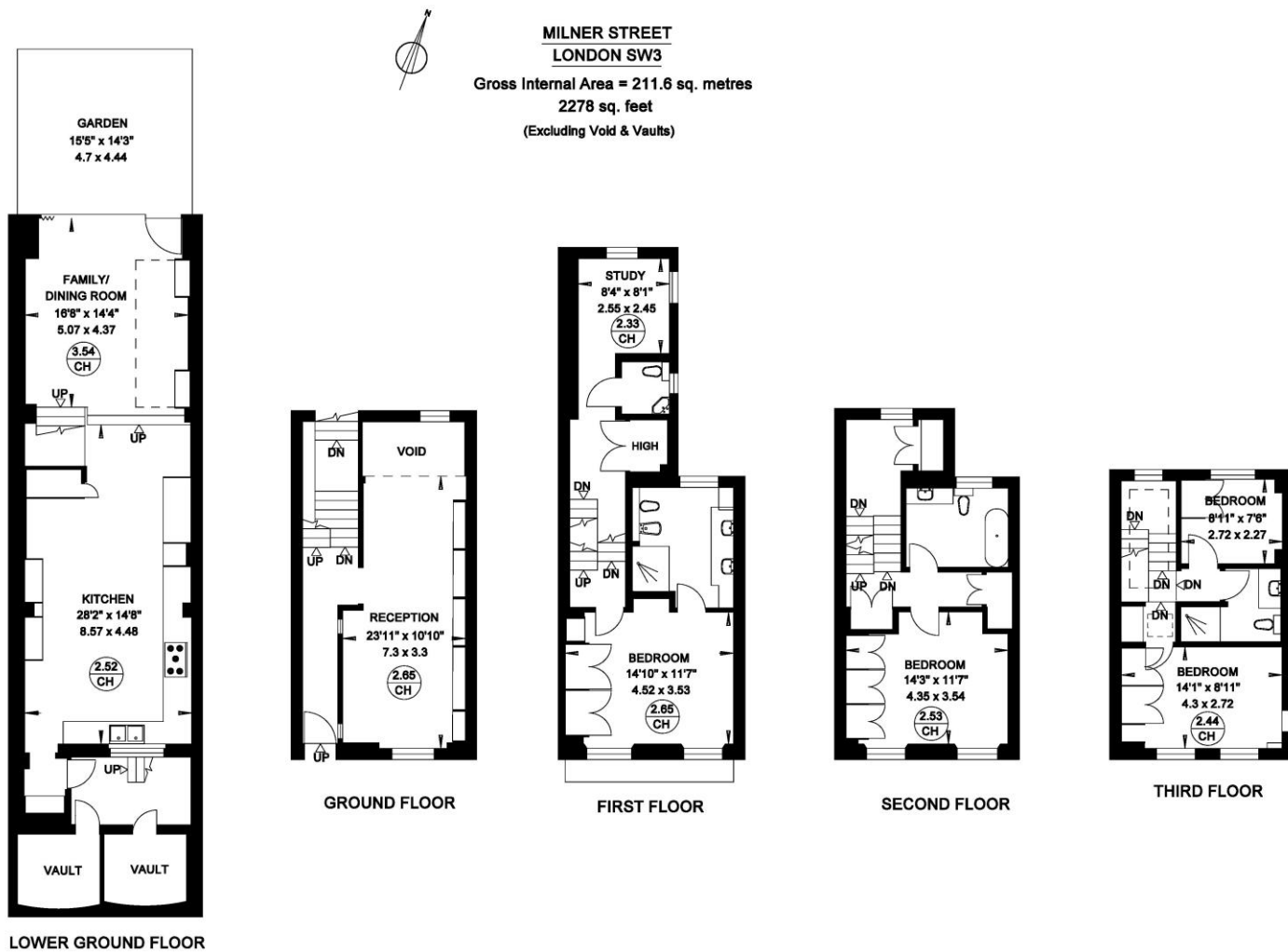
- Drawing Room
- Family Room
- Kitchen/Dining Room
- Study
- Four Bedrooms
- Three Bathrooms (One En Suite)
- Paved Garden
- Bespoke Joinery
- EPC: Band D

Freehold    Guide Price £5,250,000









Important notice: Ashdown Marks, their clients and any joint agents give notice that: 1: They are not authorised to make or give any representations or warranties in relation to the property either here or elsewhere, either on their own behalf or on behalf of their client or otherwise. They assume no responsibility for any statement that may be made in these particulars. These particulars do not form part of any offer or contract and must not be relied upon as statements or representations of fact. 2: Any areas, measurements or distances are approximate. The text, photographs and plans are for guidance only and are not necessarily comprehensive. It should not be assumed that the property has all necessary planning, building regulation or other consents and Ashdown Marks have not tested any services, equipment or facilities. Purchasers must satisfy themselves by inspection or otherwise.

**9 Milner Street, London, SW3 2QB**

**Tel: 020 7589 3353**

**[www.ashdownmarks.co.uk](http://www.ashdownmarks.co.uk)**

**ASHDOWN MARKS**  
 PROPERTY CONSULTANTS