



Roland Gardens, South Kensington SW7

ASHDOWN MARKS  
PROPERTY CONSULTANTS

## Roland Gardens, South Kensington SW7

This recently refurbished lower ground floor apartment located within a quiet enclave of South Kensington whilst benefiting from easy access to South Kensington and the amenities the area has to offer.

Offering two bedrooms, bathroom and open plan kitchen/reception room, the property offers quiet living within a recently redecorated building.

The property is 0.4 miles from South Kensington underground station (Circle, District and Piccadilly lines).

- Two Bedrooms
- Bathroom
- Reception Room with Kitchen
- Recently refurbished
- Wooden flooring
- Close proximity to South Kensington station
- EPC rating: D
- Council Tax Band F

**Furnished**      **Price £695 pwk**





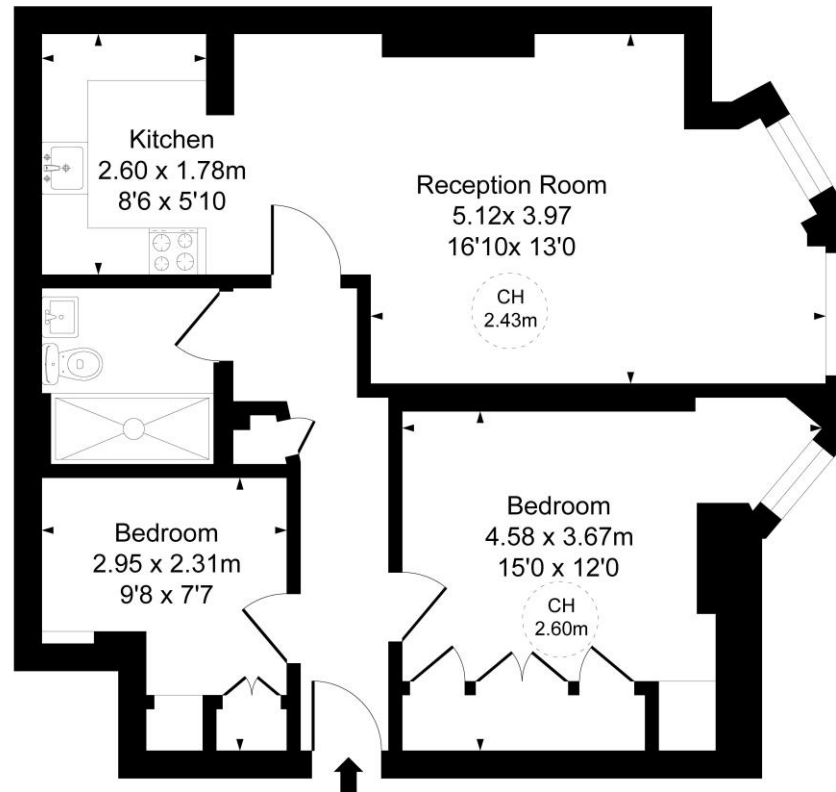


## Roland Gardens, SW7

Approximate Gross Internal Area

59.57 sq m / 641 sq ft

(CH = Ceiling Heights)



Lower Ground Floor

This plan is not to scale. It is for guidance and not for valuation purposes.

All measurements and areas are approximate only, and have been prepared in accordance with the current edition of the RICS Code of Measuring Practice.

Important notice: Ashdown Marks, their clients and any joint agents give notice that: 1: They are not authorised to make or give any representations or warranties in relation to the property either here or elsewhere, either on their own behalf or on behalf of their client or otherwise. They assume no responsibility for any statement that may be made in these particulars. These particulars do not form part of any offer or contract and must not be relied upon as statements or representations of fact. 2: Any areas, measurements or distances are approximate. The text, photographs and plans are for guidance only and are not necessarily comprehensive. It should not be assumed that the property has all necessary planning, building regulation or other consents and Ashdown Marks have not tested any services, equipment or facilities. Purchasers must satisfy themselves by inspection or otherwise.

9 Milner Street, London, SW3 2QB

Tel: 020 7589 3353

[www.ashdownmarks.co.uk](http://www.ashdownmarks.co.uk)

**ASHDOWN MARKS**  
PROPERTY CONSULTANTS