



Sloane Court West, Chelsea SW3

ASHDOWN MARKS
PROPERTY CONSULTANTS

Sloane Court West, Chelsea SW3

An exceptional first floor lateral flat featuring well proportioned accommodation with two impressive bay fronted rooms overlooking the communal gardens. The flat benefits from an elegant drawing room with wood floors and floor to ceiling windows, two double bedroom suites, a well proportioned kitchen and a guest cloakroom.

Situated close to Sloane Square in a well managed block with resident caretaker, lift and a useful basement storeroom.

- Drawing Room
- Kitchen
- Two Double Bedroom Suites
- Cloakroom
- Lift
- Basement Store Room
- Communal Central Heating & Hot Water
- Resident Caretaker
- Communal Gardens
- EPC: Band D

Lease: Expires December 2105

Service Charge: 10% of total outgoings

Guide Price £3,400,000





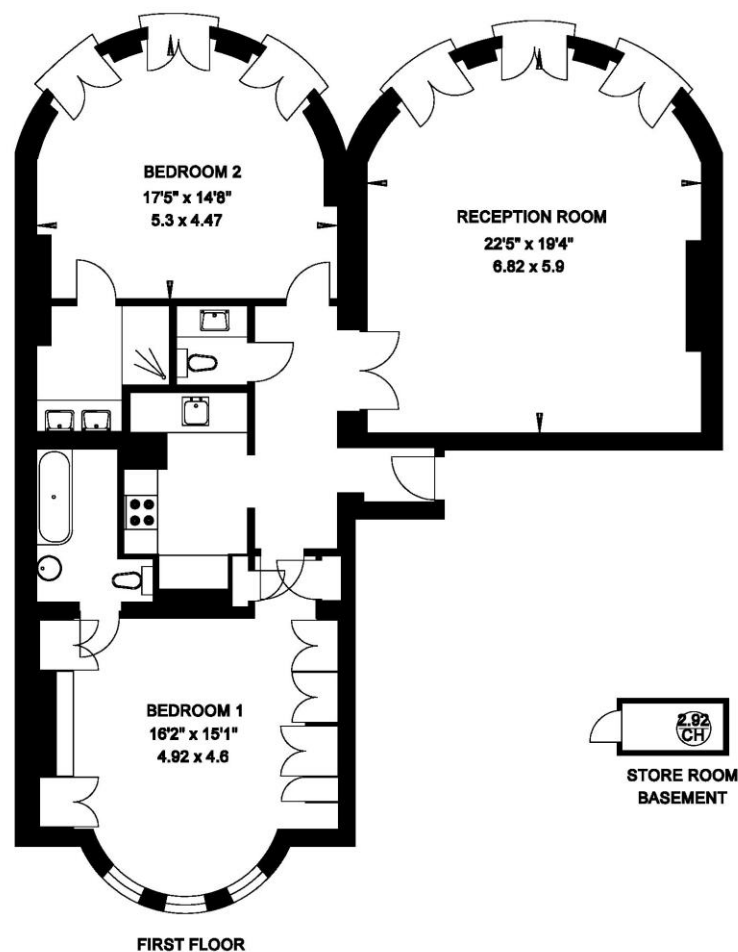
SLOANE COURT WEST

LONDON SW3

Gross Internal Area = 113 sq. metres

1220 sq. feet

Store Room = 1.5 sq. metres/ 16 sq. feet



Important notice: Ashdown Marks, their clients and any joint agents give notice that: 1: They are not authorised to make or give any representations or warranties in relation to the property either here or elsewhere, either on their own behalf or on behalf of their client or otherwise. They assume no responsibility for any statement that may be made in these particulars. These particulars do not form part of any offer or contract and must not be relied upon as statements or representations of fact. 2: Any areas, measurements or distances are approximate. The text, photographs and plans are for guidance only and are not necessarily comprehensive. It should not be assumed that the property has all necessary planning, building regulation or other consents and Ashdown Marks have not tested any services, equipment or facilities. Purchasers must satisfy themselves by inspection or otherwise.

9 Milner Street, London, SW3 2QB

Tel: 020 7589 3353

www.ashdownmarks.co.uk

ASHDOWN MARKS
PROPERTY CONSULTANTS