



Cadogan Square, Knightsbridge SW1X

ASHDOWN MARKS
PROPERTY CONSULTANTS

Cadogan Square, Knightsbridge SW1X

A particularly bright and spacious flat, with a **Share of Freehold**, situated on the lower ground floor of a substantial Grade II listed building with its own street entrance and south facing rear patio.

The flat is now in need of modernisation but offers great potential, subject to the necessary consents.

- Reception Room
- Kitchen
- Two Bedrooms
- Bathroom
- South Facing Patio
- Access to Cadogan Square gardens subject to subscription
- Council Tax: Band F
- EPC Exempt
- Lease: 999 years from 1st June 2007
- Service Charge: 7.5% of total outgoings

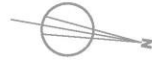
Share of Freehold

Guide Price £1,350,000





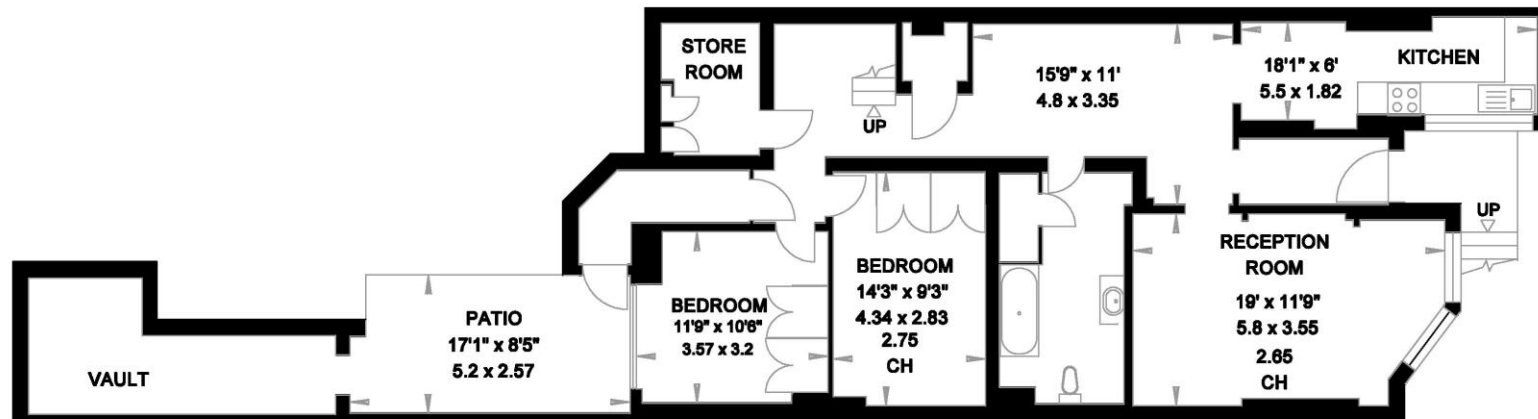
**CADOGAN SQUARE
LONDON SW1**



**Gross Internal Area = 111.5 sq. metres
1200 sq. feet
(Excluding Vault)**



GROUND FLOOR



LOWER GROUND FLOOR

Important notice: Ashdown Marks, their clients and any joint agents give notice that: 1: They are not authorised to make or give any representations or warranties in relation to the property either here or elsewhere, either on their own behalf or on behalf of their client or otherwise. They assume no responsibility for any statement that may be made in these particulars. These particulars do not form part of any offer or contract and must not be relied upon as statements or representations of fact. 2: Any areas, measurements or distances are approximate. The text, photographs and plans are for guidance only and are not necessarily comprehensive. It should not be assumed that the property has all necessary planning, building regulation or other consents and Ashdown Marks have not tested any services, equipment or facilities. Purchasers must satisfy themselves by inspection or otherwise.

9 Milner Street, London, SW3 2QB

Tel: 020 7589 3353

www.ashdownmarks.co.uk

ASHDOWN MARKS
PROPERTY CONSULTANTS