

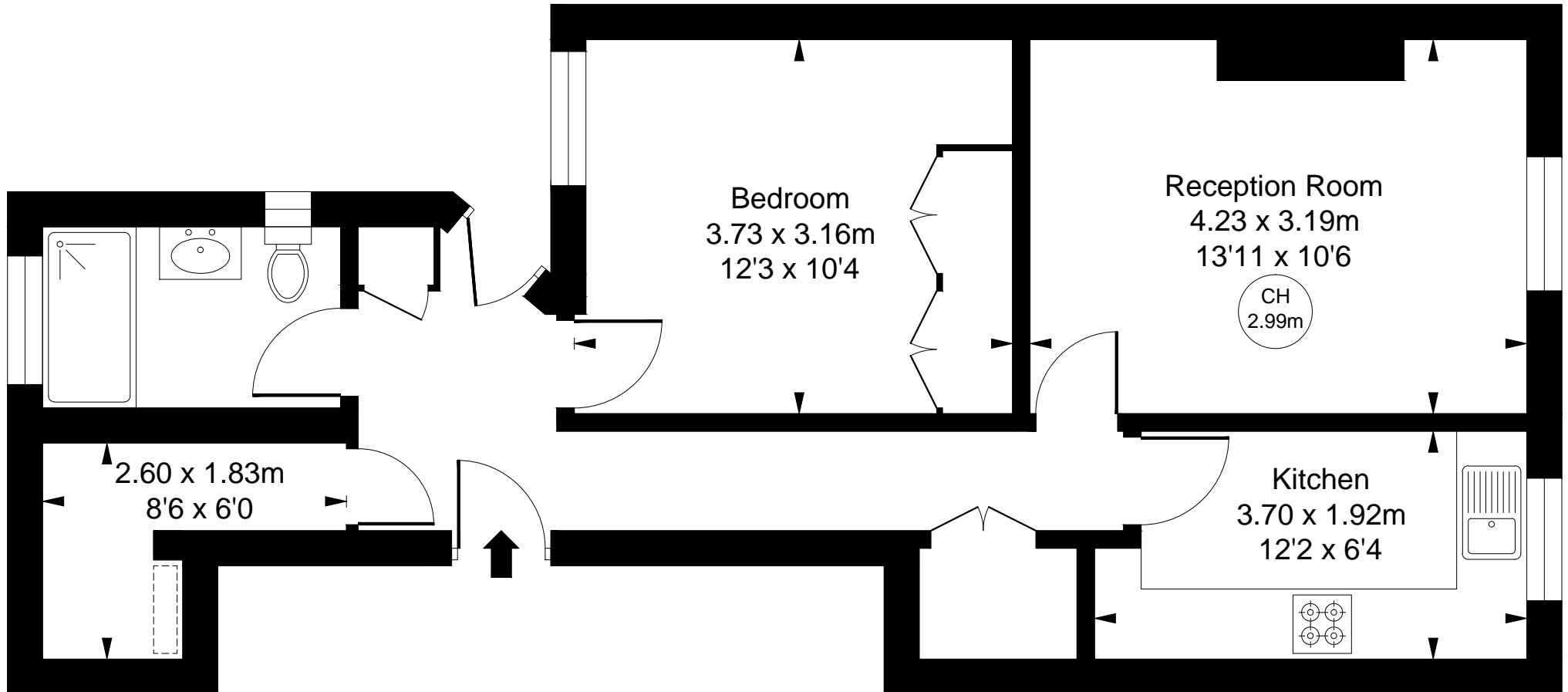
Kings Road, London, SW3

Approximate Gross Internal Area

52.63 sq m / 567 sq ft

(Including restricted height
under 1.5m)

(CH = Ceiling Heights)



First Floor

This plan is not to scale. It is for guidance and not for valuation purposes.

All measurements and areas are approximate only, and have been prepared in accordance with the current edition of the RICS Code of Measuring Practice.