



Duke Of York Square, Chelsea SW3

ASHDOWN MARKS
PROPERTY CONSULTANTS

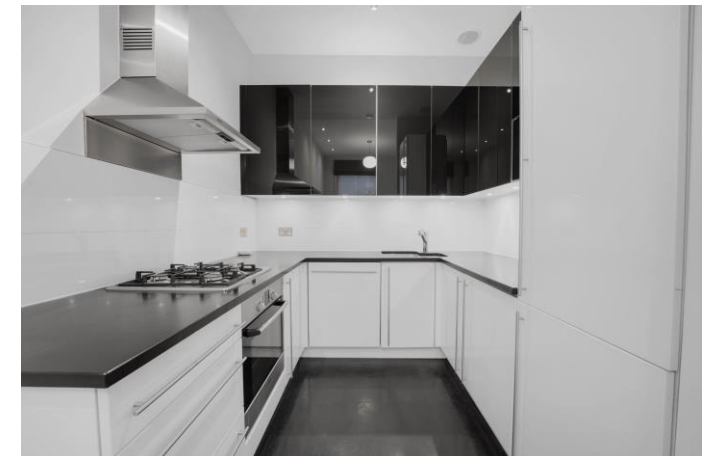
Duke Of York Square

Chelsea, SW3 4LZ

A recently refurbished one bedroom apartment situated on the second floor of this well maintained building on Duke of York Square with a short walk from Sloane Square and all amenities of Kings Road.

- 1 Bedroom
- 1 Bathroom
- Reception Room
- Open Plan Kitchen
- Recently Refurbished
- Access to Garden Square by separate arrangement
- EPC - Rating B
- Council Tax - Band E

Unfurnished £750 per week



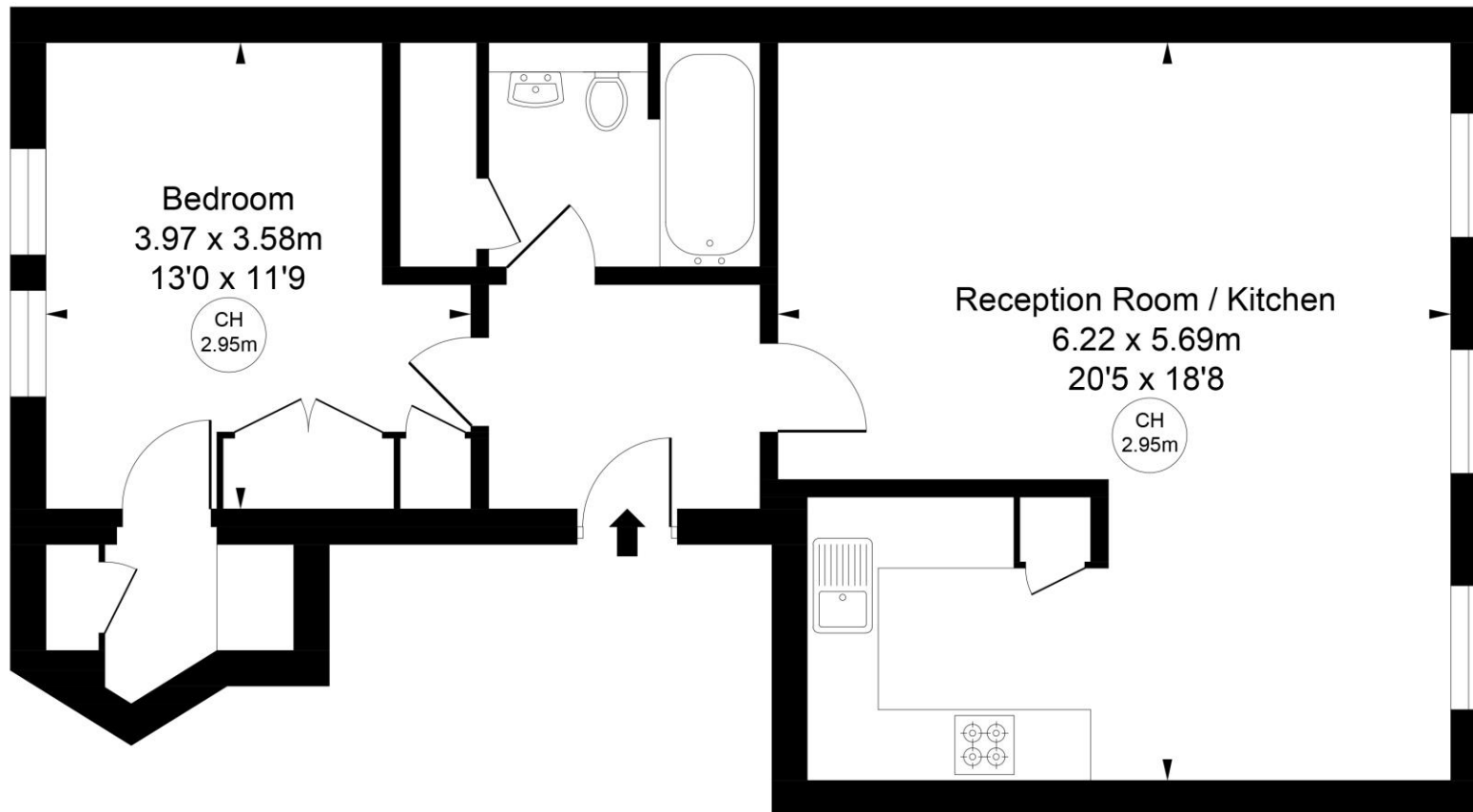


Frederick Court, Duke of York Square, Chelsea, SW3

Approximate Gross Internal Area

62.43 sq m / 672 sq ft

(CH = Ceiling Heights)



Second Floor

This plan is not to scale. It is for guidance and not for valuation purposes.

All measurements and areas are approximate only, and have been prepared in accordance with the current edition of the RICS Code of Measuring Practice.

Important notice: Ashdown Marks, their clients and any joint agents give notice that: 1: They are not authorised to make or give any representations or warranties in relation to the property either here or elsewhere, either on their own behalf or on behalf of their client or otherwise. They assume no responsibility for any statement that may be made in these particulars. These particulars do not form part of any offer or contract and must not be relied upon as statements or representations of fact. 2: Any areas, measurements or distances are approximate. The text, photographs and plans are for guidance only and are not necessarily comprehensive. It should not be assumed that the property has all necessary planning, building regulation or other consents and Ashdown Marks have not tested any services, equipment or facilities. Purchasers must satisfy themselves by inspection or otherwise.

9 Milner Street, London, SW3 2QB

Tel: 020 7589 3353

www.ashdownmarks.co.uk

ASHDOWN MARKS
PROPERTY CONSULTANTS