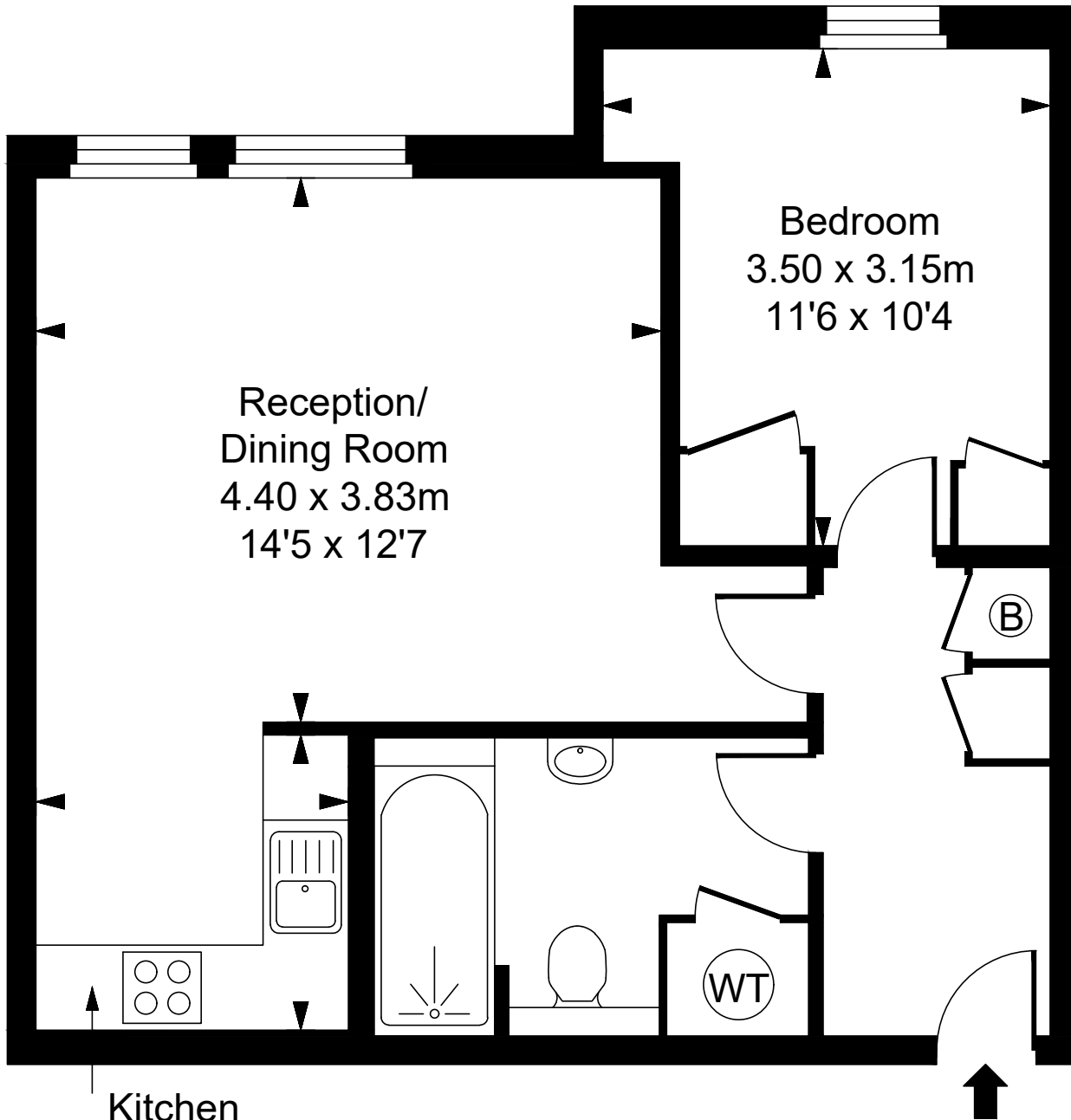


Frederick Court, Duke of York Square, SW3

Approximate Gross Internal Area
45.99 sq m / 495 sq ft

(CH = Ceiling Heights)



Third Floor

Kitchen
2.20 x 2.08m
7'3 x 6'10

Reception/
Dining Room
4.40 x 3.83m
14'5 x 12'7

Bedroom
3.50 x 3.15m
11'6 x 10'4

This plan is not to scale. It is for guidance and not for valuation purposes.

All measurements and areas are approximate only, and have been prepared in accordance with the current edition of the RICS Code of Measuring Practice.

© Fulham Performance