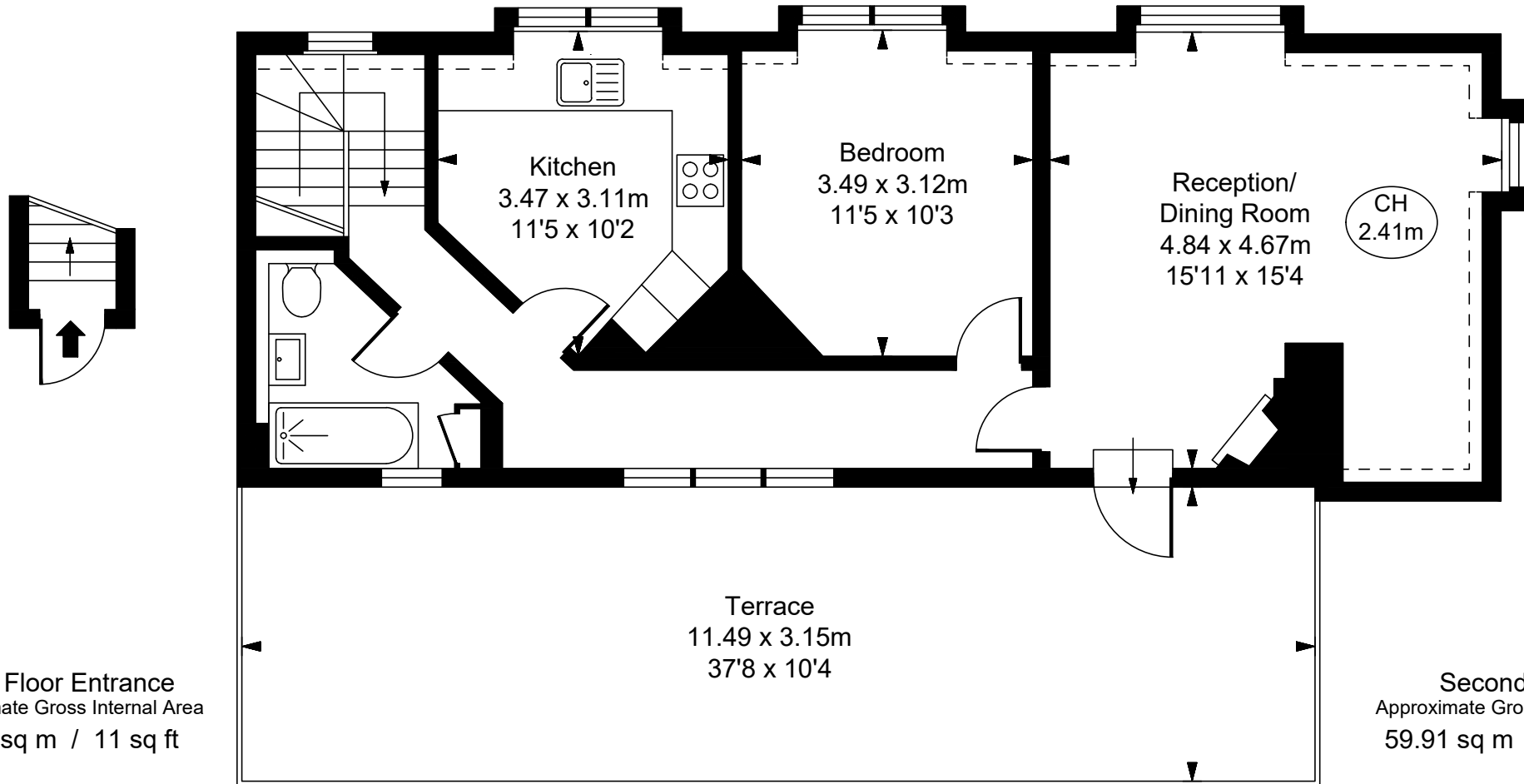


Honiton Mansions, Flood Street, SW3

Approximate Gross Internal Area
60.89 sq m / 655 sq ft
(Including restricted height
under 1.5m [-----])
(CH = Ceiling Heights)



First Floor Entrance
Approximate Gross Internal Area
0.98 sq m / 11 sq ft

Second Floor
Approximate Gross Internal Area
59.91 sq m / 645 sq ft