



Crescent Mansions, Fulham Road SW3

ASHDOWN MARKS  
PROPERTY CONSULTANTS

## Crescent Mansions, Fulham Road, SW3

This second floor family apartment (with lift) boasts three double bedrooms, dressing room, two en suite bathrooms, separate shower room, double reception room, utility room and kitchen.

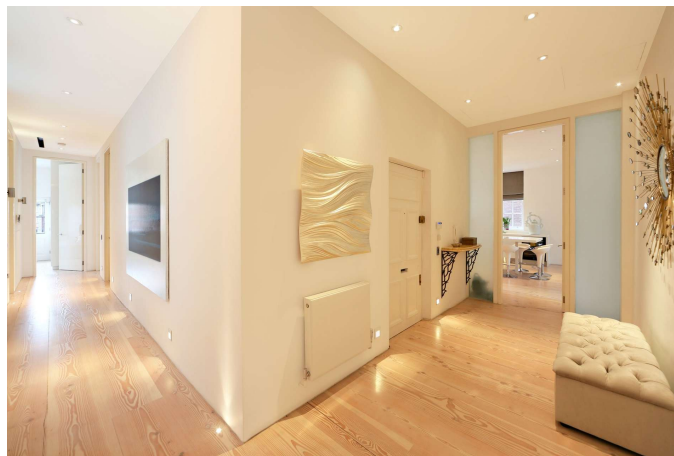
The flat offers an abundance of light and is situated in a very discreet building overlooking Pelham Crescent. It has recently been refurbished to an extremely high standard and further benefits from air conditioning and wooden flooring throughout.

Crescent Mansions is centrally located close to the junction of Brompton Cross, within easy reach of South Kensington.

- Lateral apartment
- 35 ft kitchen/dining room
- Double reception room
- Three double bedrooms
- Three bathrooms (Two en suite)
- Wooden flooring throughout
- Air conditioning
- Lift
- Unfurnished
- EPC: Band C

Price £3,150 pw

Unfurnished









Important notice: Ashdown Marks, their clients and any joint agents give notice that: 1: They are not authorised to make or give any representations or warranties in relation to the property either here or elsewhere, either on their own behalf or on behalf of their client or otherwise. They assume no responsibility for any statement that may be made in these particulars. These particulars do not form part of any offer or contract and must not be relied upon as statements or representations of fact. 2: Any areas, measurements or distances are approximate. The text, photographs and plans are for guidance only and are not necessarily comprehensive. It should not be assumed that the property has all necessary planning, building regulation or other consents and Ashdown Marks have not tested any services, equipment or facilities. Purchasers must satisfy themselves by inspection or otherwise.

9 Milner Street, London, SW3 2QB

Tel: 020 7589 3353

[www.ashdownmarks.co.uk](http://www.ashdownmarks.co.uk)

**ASHDOWN MARKS**  
PROPERTY CONSULTANTS