



South Parade, Chelsea Square SW3

ASHDOWN MARKS
PROPERTY CONSULTANTS



South Parade Chelsea, SW3

A recently refurbished contemporary studio apartment located on the second floor of a small secure building in Chelsea.

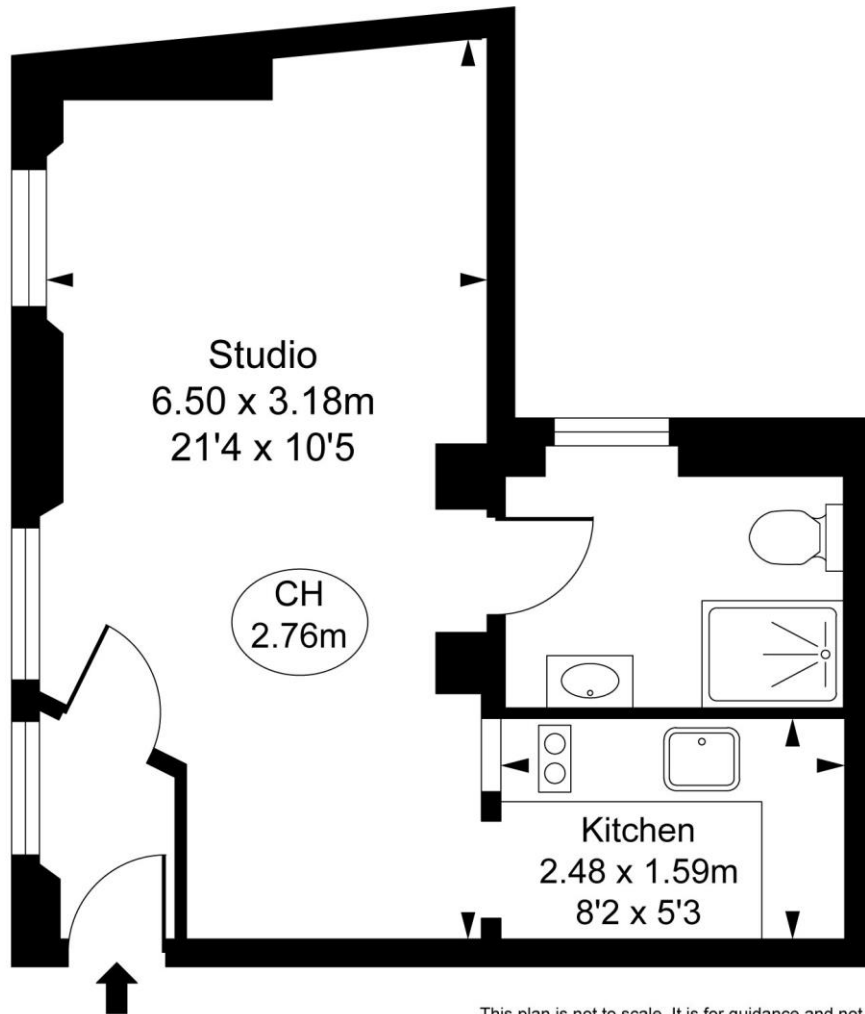
It is available unfurnished and is positioned just a few minutes walk from the shops and amenities of the King`s Road.

- Studio Room
- Kitchen
- Bathroom
- Excellent Location
- Newly Refurbished
- Council Tax - Band C
- EPC - Rating C

Price £480 pw Unfurnished



Trafalgar Chambers,
South Parade, SW3
Approximate Gross Internal Area
28.51 sq m / 307 sq ft
(CH = Ceiling Heights)



Second Floor

This plan is not to scale. It is for guidance and not for valuation purposes.
All measurements and areas are approximate only, and have been prepared in accordance with the current edition of the RICS Code of Measuring Practice.
© Fulham Performance

Important notice: Ashdown Marks, their clients and any joint agents give notice that: 1: They are not authorised to make or give any representations or warranties in relation to the property either here or elsewhere, either on their own behalf or on behalf of their client or otherwise. They assume no responsibility for any statement that may be made in these particulars. These particulars do not form part of any offer or contract and must not be relied upon as statements or representations of fact. 2: Any areas, measurements or distances are approximate. The text, photographs and plans are for guidance only and are not necessarily comprehensive. It should not be assumed that the property has all necessary planning, building regulation or other consents and Ashdown Marks have not tested any services, equipment or facilities. Purchasers must satisfy themselves by inspection or otherwise.

9 Milner Street, London, SW3 2QB

Tel: +44 (0)20 7589 3353

www.ashdownmarks.co.uk

ASHDOWN MARKS
PROPERTY CONSULTANTS