



Foulis Terrace, South Kensington SW7

ASHDOWN MARKS
PROPERTY CONSULTANTS



Foulis Terrace

South Kensington , SW7 3LZ

A beautifully presented second floor apartment in a recently renovated period stucco fronted building.

Accommodation comprises reception room, shower room and large eat in kitchen. The apartment also benefits from independent heating and access to a communal garden with bicycle storage.

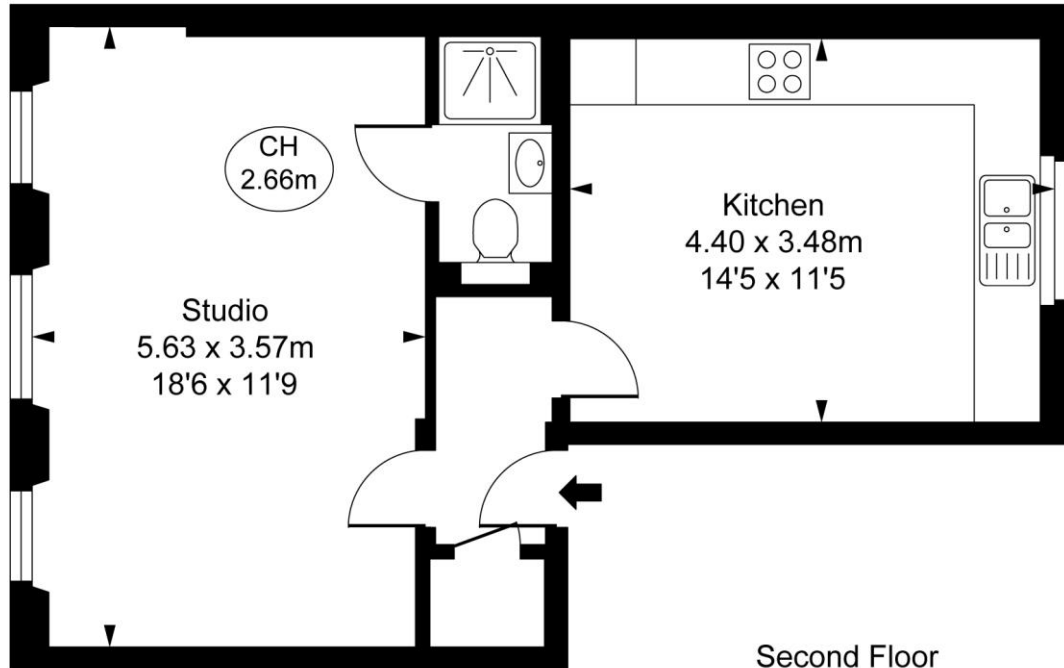
Foulis Terrace is ideally situated for the shops and restaurants of both South Kensington and Chelsea.

- Studio
- Eat in Kitchen
- Shower Room
- Bicycle Storage
- EPC - Rating C
- Council Tax included

Price £495 pw Unfurnished







Foulis Terrace, SW7
 Approximate Gross Internal Area
41.47 sq m / 446 sq ft
 (CH = Ceiling Heights)



Second Floor

This plan is not to scale. It is for guidance and not for valuation purposes.
 All measurements and areas are approximate only, and have been prepared in accordance with the current edition of the RICS Code of Measuring Practice.
 © Fulham Performance

Important notice: Ashdown Marks, their clients and any joint agents give notice that: 1: They are not authorised to make or give any representations or warranties in relation to the property either here or elsewhere, either on their own behalf or on behalf of their client or otherwise. They assume no responsibility for any statement that may be made in these particulars. These particulars do not form part of any offer or contract and must not be relied upon as statements or representations of fact. 2: Any areas, measurements or distances are approximate. The text, photographs and plans are for guidance only and are not necessarily comprehensive. It should not be assumed that the property has all necessary planning, building regulation or other consents and Ashdown Marks have not tested any services, equipment or facilities. Purchasers must satisfy themselves by inspection or otherwise.

9 Milner Street, London, SW3 2QB

Tel: 020 7589 3353

www.ashdownmarks.co.uk

ASHDOWN MARKS
 PROPERTY CONSULTANTS