



South Parade, Chelsea SW3

ASHDOWN MARKS
PROPERTY CONSULTANTS

South Parade

Chelsea, SW3 6LP

A newly renovated one bedroom apartment located on the 2nd floor of a period building in Chelsea.

Located a short walk from the shops and amenities of the Kings Road and Old Brompton Road. The apartment is offered unfurnished.

- Reception Room
- Bedroom
- Kitchen
- Bathroom
- Excellent Location
- Council Tax - Band C
- EPC - Rating C

Price £530 pw Unfurnished

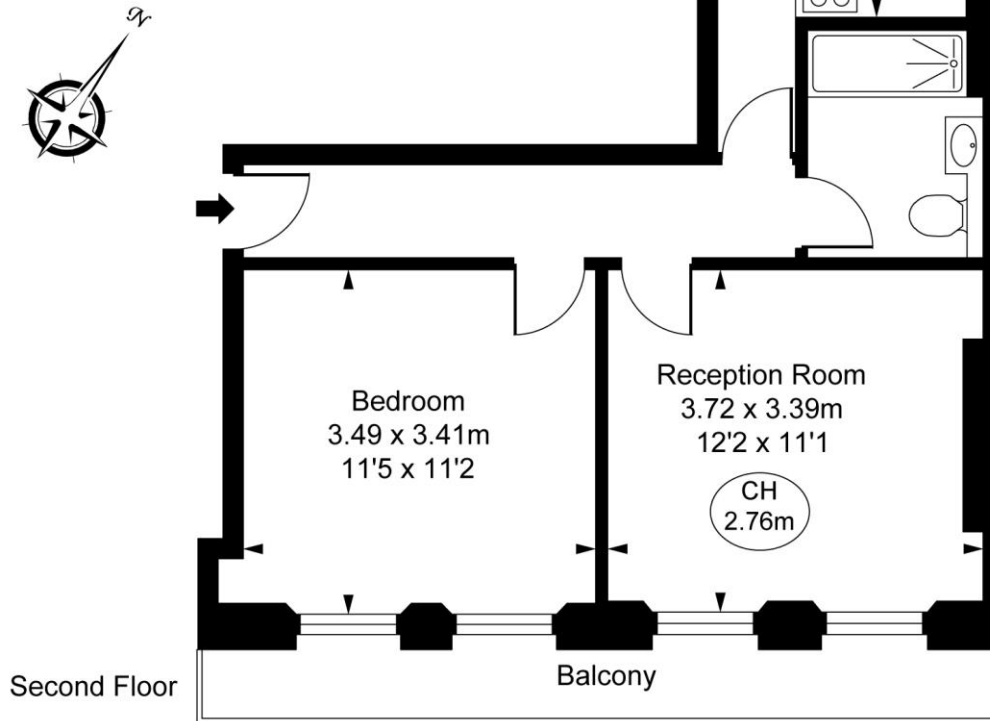




Trafalgar Chambers, SW3

Approximate Gross Internal Area
41.82 sq m / 450 sq ft

(CH = Ceiling Heights)



This plan is not to scale. It is for guidance and not for valuation purposes.
All measurements and areas are approximate only, and have been prepared in accordance with the current edition of the RICS Code of Measuring Practice.
© Fulham Performance

Important notice: Ashdown Marks, their clients and any joint agents give notice that: 1: They are not authorised to make or give any representations or warranties in relation to the property either here or elsewhere, either on their own behalf or on behalf of their client or otherwise. They assume no responsibility for any statement that may be made in these particulars. These particulars do not form part of any offer or contract and must not be relied upon as statements or representations of fact. 2: Any areas, measurements or distances are approximate. The text, photographs and plans are for guidance only and are not necessarily comprehensive. It should not be assumed that the property has all necessary planning, building regulation or other consents and Ashdown Marks have not tested any services, equipment or facilities. Purchasers must satisfy themselves by inspection or otherwise.

9 Milner Street, London, SW3 2QB

Tel: 020 7589 3353

www.ashdownmarks.co.uk

ASHDOWN MARKS
PROPERTY CONSULTANTS