



Embankment Gardens, Chelsea SW3

ASHDOWN MARKS
PROPERTY CONSULTANTS

Embankment Gardens

Chelsea, SW3 4LJ

An excellent two double bedroom flat situated on the second floor of this fine period building.

The flat enjoys open views to the front towards the river and over the private grounds of Providence House to the rear.

The flat also features an attractive drawing room, a generous bay fronted principal bedroom, second double bedroom/study with wood panelling and a spacious hallway with good storage.

- Drawing Room
- Kitchen
- Principal Bedroom with En-Suite Shower Room
- Second Double Bedroom/ Study
- Bathroom
- Excellent Storage
- EPC: Rating C Council Tax: Band G

Lease: Expires Sept 2136 plus Share of Freehold

Service Charge: Approx £3,693 p.a on account subject to annual review.

Guide Price £1,300,000

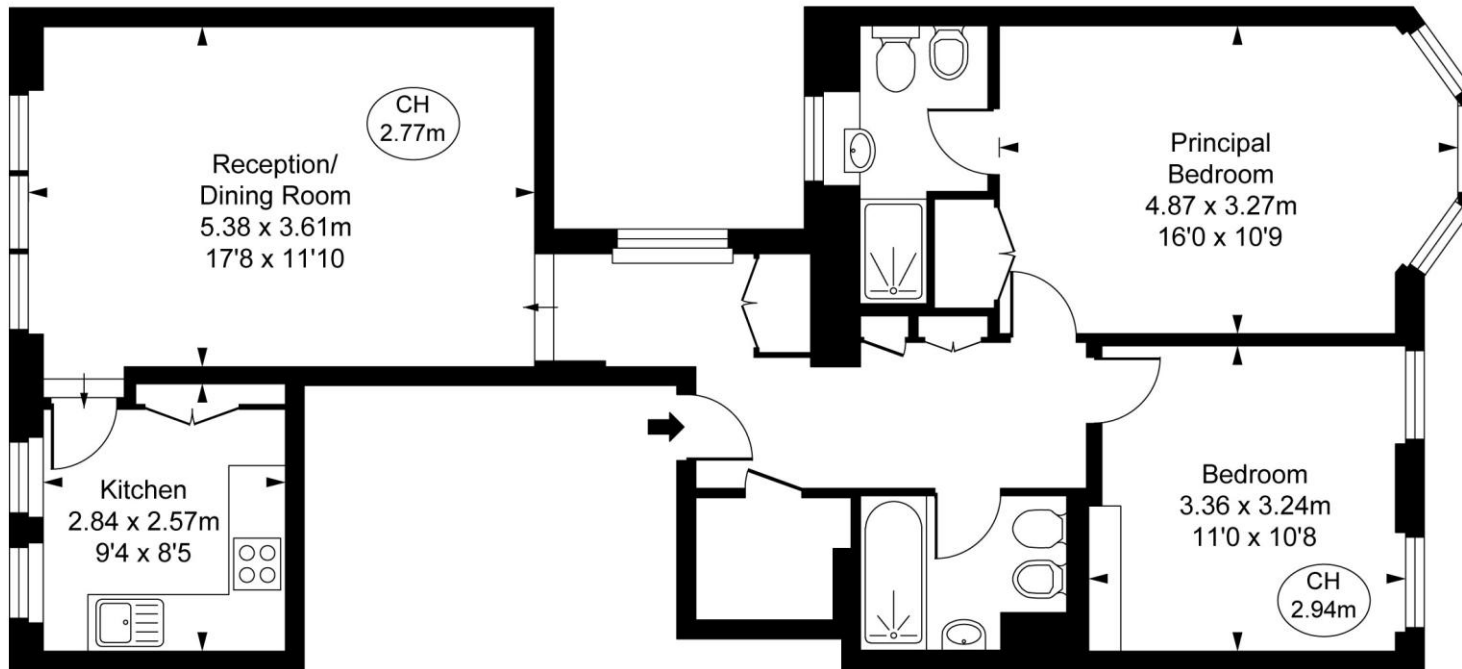




Embankment Gardens, SW3

Approximate Gross Internal Area
75.19 sq m / 809 sq ft

(CH = Ceiling Heights)



Second Floor

FULHAM PERFORMANCE
PRECISION YOU CAN TRUST

This plan is not to a given scale. A detailed layout plan with dimensions is available on request. All quoted measurements and areas are within 1% tolerance and have been prepared in accordance with industry standards as defined in the RICS Code of Measuring Practice © Fulham Performance

Important notice: Ashdown Marks, their clients and any joint agents give notice that: 1: They are not authorised to make or give any representations or warranties in relation to the property either here or elsewhere, either on their own behalf or on behalf of their client or otherwise. They assume no responsibility for any statement that may be made in these particulars. These particulars do not form part of any offer or contract and must not be relied upon as statements or representations of fact. 2: Any areas, measurements or distances are approximate. The text, photographs and plans are for guidance only and are not necessarily comprehensive. It should not be assumed that the property has all necessary planning, building regulation or other consents and Ashdown Marks have not tested any services, equipment or facilities. Purchasers must satisfy themselves by inspection or otherwise.

9 Milner Street, London, SW3 2QB

Tel: 020 7589 3353

www.ashdownmarks.co.uk

ASHDOWN MARKS
PROPERTY CONSULTANTS