



Sloane Street, Knightsbridge SW1X

ASHDOWN MARKS
PROPERTY CONSULTANTS

Oakley House, Sloane Street

Knightsbridge, SW1X 9PP

A beautifully presented second floor apartment in a portered building situated on Sloane Street.

The property consists of two double bedrooms, one bathroom, reception room with wood floors and fully fitted kitchen. The apartment also benefits from communal heating and hot water and a lift.

Oakley House is within walking distance of shops, restaurants and transport in between Knightsbridge and Sloane Square.

- 2 Bedrooms
- Reception Room
- Bathroom
- Porter
- Lift
- Access to communal gardens by separate arrangement
- Excellent Location
- Communal Heating & Hot Water
- Council Tax - Band G
- EPC - Rating C

Price £950 pw Unfurnished



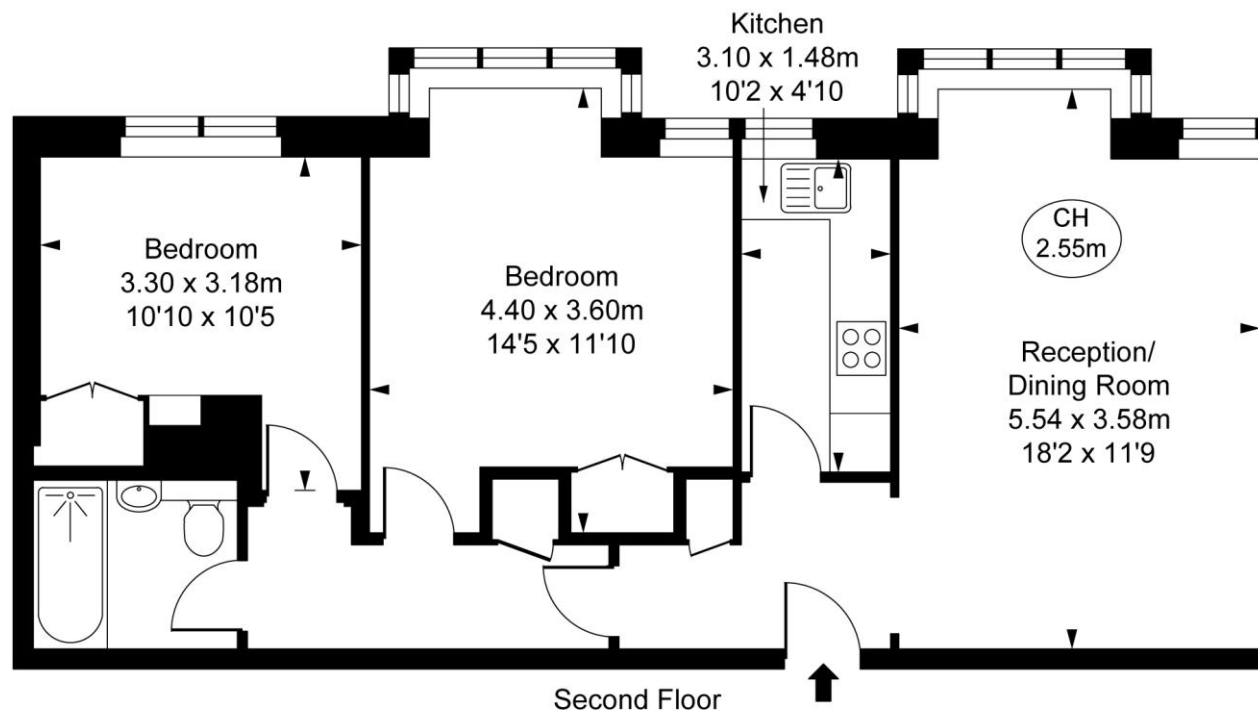


Oakley House,
Sloane Street, SW1X

Approximate Gross Internal Area

61.20 sq m / 659 sq ft

(CH = Ceiling Heights)



This plan is not to scale. It is for guidance and not for valuation purposes.
All measurements and areas are approximate only, and have been prepared in accordance with the current edition of the RICS Code of Measuring Practice.
© Fulham Performance

Important notice: Ashdown Marks, their clients and any joint agents give notice that: 1: They are not authorised to make or give any representations or warranties in relation to the property either here or elsewhere, either on their own behalf or on behalf of their client or otherwise. They assume no responsibility for any statement that may be made in these particulars. These particulars do not form part of any offer or contract and must not be relied upon as statements or representations of fact. 2: Any areas, measurements or distances are approximate. The text, photographs and plans are for guidance only and are not necessarily comprehensive. It should not be assumed that the property has all necessary planning, building regulation or other consents and Ashdown Marks have not tested any services, equipment or facilities. Purchasers must satisfy themselves by inspection or otherwise.

9 Milner Street, London, SW3 2QB

Tel: 020 7589 3353

www.ashdownmarks.co.uk

ASHDOWN MARKS
PROPERTY CONSULTANTS