



Walpole Street, Chelsea SW3

ASHDOWN MARKS
PROPERTY CONSULTANTS

Walpole Street

Chelsea, SW3

**A wonderful and spacious
five bedroom period family house
located close to Sloane Square.**

An exceptional five bedroom end of terrace period house, ideally located on the western side of Walpole Street, which offers well arranged and balanced family accommodation.

Extended and refurbished in recent years, the house features an attractive 32' (10m) ground floor Drawing Room opening onto a west facing terrace and with all 5 double bedrooms situated on the upper floors.

Walpole Street runs directly off the King's Road close to Sloane Square and the open spaces of Burton's Court.

Guide Price: £5,950,000







- 32' Drawing Room
- Family Room/ Dining Room
- Poggenpohl Kitchen
- 5 Double Bedrooms
- 3 Bathrooms (Two en suite)
- 2 Cloakrooms
- Utility Room
- Paved Patio
- West Facing Terrace
- Excellent Storage
- EPC: Rating D
- Council Tax: Band H
- 2,945 sq.ft / 273 sq.m
- Freehold

Guide Price: £5,950,000

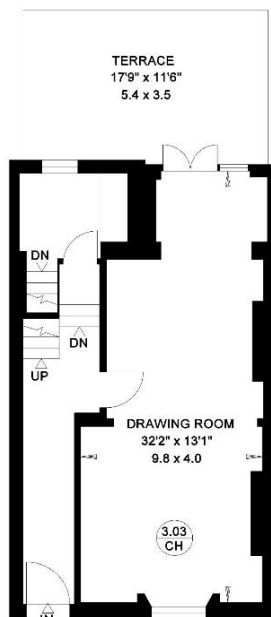


WALPOLE STREET
LONDON SW3

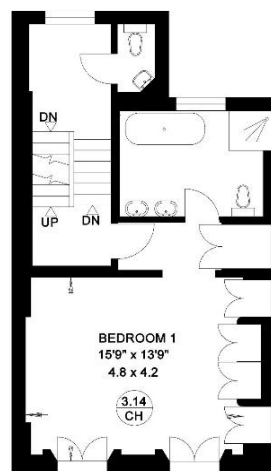
Gross Internal Area = 273 sq. metres
(Excluding External Vault) 2945 sq. feet



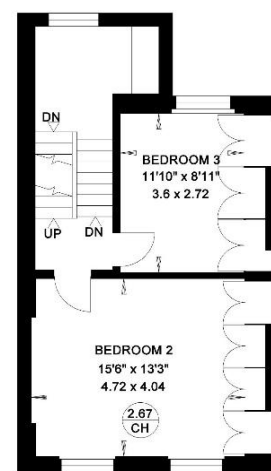
LOWER GROUND FLOOR



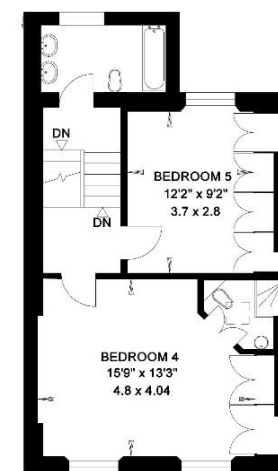
GROUND FLOOR



FIRST FLOOR



SECOND FLOOR



THIRD FLOOR

Important notice: Ashdown Marks, their clients and any joint agents give notice that: 1: They are not authorised to make or give any representations or warranties in relation to the property either here or elsewhere, either on their own behalf or on behalf of their client or otherwise. They assume no responsibility for any statement that may be made in these particulars. These particulars do not form part of any offer or contract and must not be relied upon as statements or representations of fact. 2: Any areas, measurements or distances are approximate. The text, photographs and plans are for guidance only and are not necessarily comprehensive. It should not be assumed that the property has all necessary planning, building regulation or other consents and Ashdown Marks have not tested any services, equipment or facilities.

9 Milner Street,
London, SW3 2QB

Tel: +44 (0)20 7589 3353

www.ashdownmarks.co.uk

ASHDOWN MARKS
PROPERTY CONSULTANTS