



Easton House, 17 – 18 Smith Street, Chelsea SW3

ASHDOWN MARKS  
PROPERTY CONSULTANTS

## Smith Street

Chelsea, SW3 4EH

A bright one bedroom apartment situated on the second floor (with lift), located in a well managed period building moments from the King's Road.

Accommodation comprises a spacious reception room with dining area, a generous double bedroom with a southerly aspect over the neighbouring gardens and en-suite bathroom.

- Reception Room with Dining Area
- Kitchen
- Double Bedroom with good storage
- En Suite Bathroom
- Cloakroom
- Lift
- Communal Heating & Hot Water
- Council Tax: Band F
- EPC: Rating D

Lease: 999 Years from 2016

Service Charges: Approx £5,900 p.a subject to annual review.

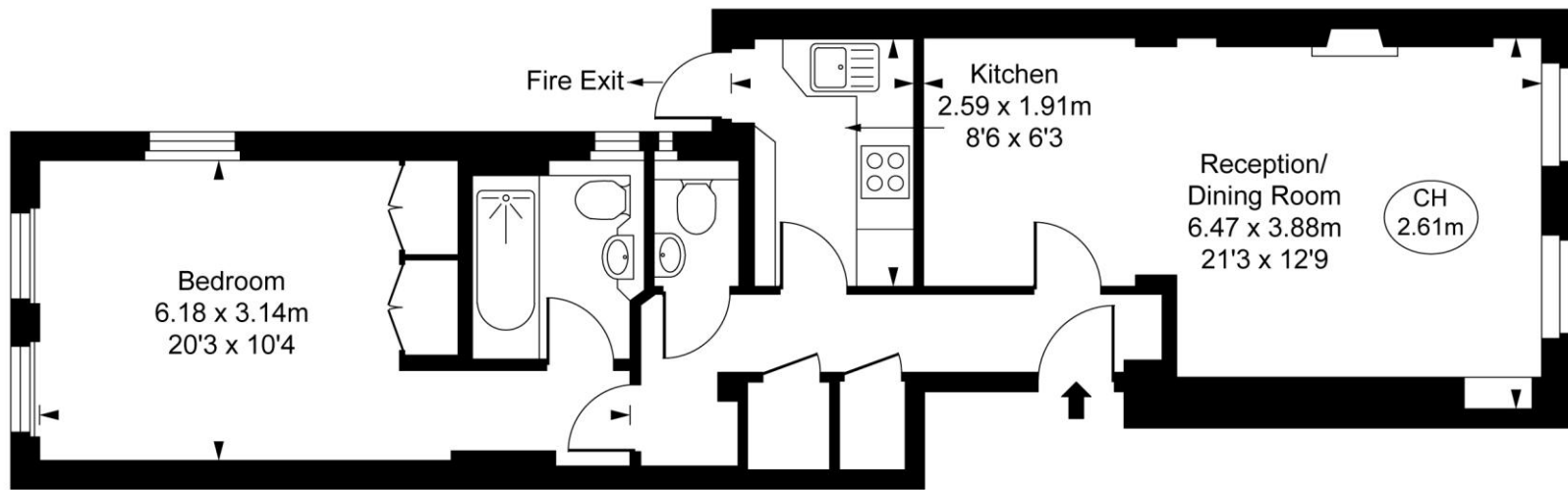
**Share of Freehold    Price £815,000**







Easton Court,  
Smith Street, SW3  
Approximate Gross Internal Area  
**54.78 sq m / 590 sq ft**  
( CH = Ceiling Heights )



Second Floor

This plan is not to scale. It is for guidance and not for valuation purposes.  
All measurements and areas are approximate only, and have been prepared in accordance with the current edition of the RICS Code of Measuring Practice.  
© Fulham Performance

Important notice: Ashdown Marks, their clients and any joint agents give notice that: 1: They are not authorised to make or give any representations or warranties in relation to the property either here or elsewhere, either on their own behalf or on behalf of their client or otherwise. They assume no responsibility for any statement that may be made in these particulars. These particulars do not form part of any offer or contract and must not be relied upon as statements or representations of fact. 2: Any areas, measurements or distances are approximate. The text, photographs and plans are for guidance only and are not necessarily comprehensive. It should not be assumed that the property has all necessary planning, building regulation or other consents and Ashdown Marks have not tested any services, equipment or facilities. Purchasers must satisfy themselves by inspection or otherwise.

**9 Milner Street, London, SW3 2QB**

**Tel: 020 7589 3353**

**[www.ashdownmarks.co.uk](http://www.ashdownmarks.co.uk)**

**ASHDOWN MARKS**  
PROPERTY CONSULTANTS