



Walpole Street, Chelsea SW3

ASHDOWN MARKS
PROPERTY CONSULTANTS

Walpole Street

Chelsea, SW3

An excellent opportunity to remodel a fine family home in one of the preferred positions on the West side of this broad street, running from King's Road to St Leonard's Terrace and Burton Court. Sloane Square tube station, Duke of York's Square and the Saatchi Gallery are within a few minutes' walk.

Formerly in use as a private Dental Practice, this Freehold building is arranged over five floors with personal use for a dental surgery on the Lower Ground, Ground and First floors and a two bedroom maisonette above. Now in need of redesign and refurbishment, the house measures approximately 2,607 sq ft including the front vaults and has potential to infill at the rear.

There is a decked South-West facing garden, with a small pond, accessed from the Ground Floor.

- Needing rearrangement and refurbishment
- Potentially 4/5 bedrooms and 3 Bathrooms
- Handsome period house - not listed
- West facing Garden
- Air conditioning (untested)
- Council Tax: Band G. EPC: Rating C

Freehold Guide Price £4,000,000



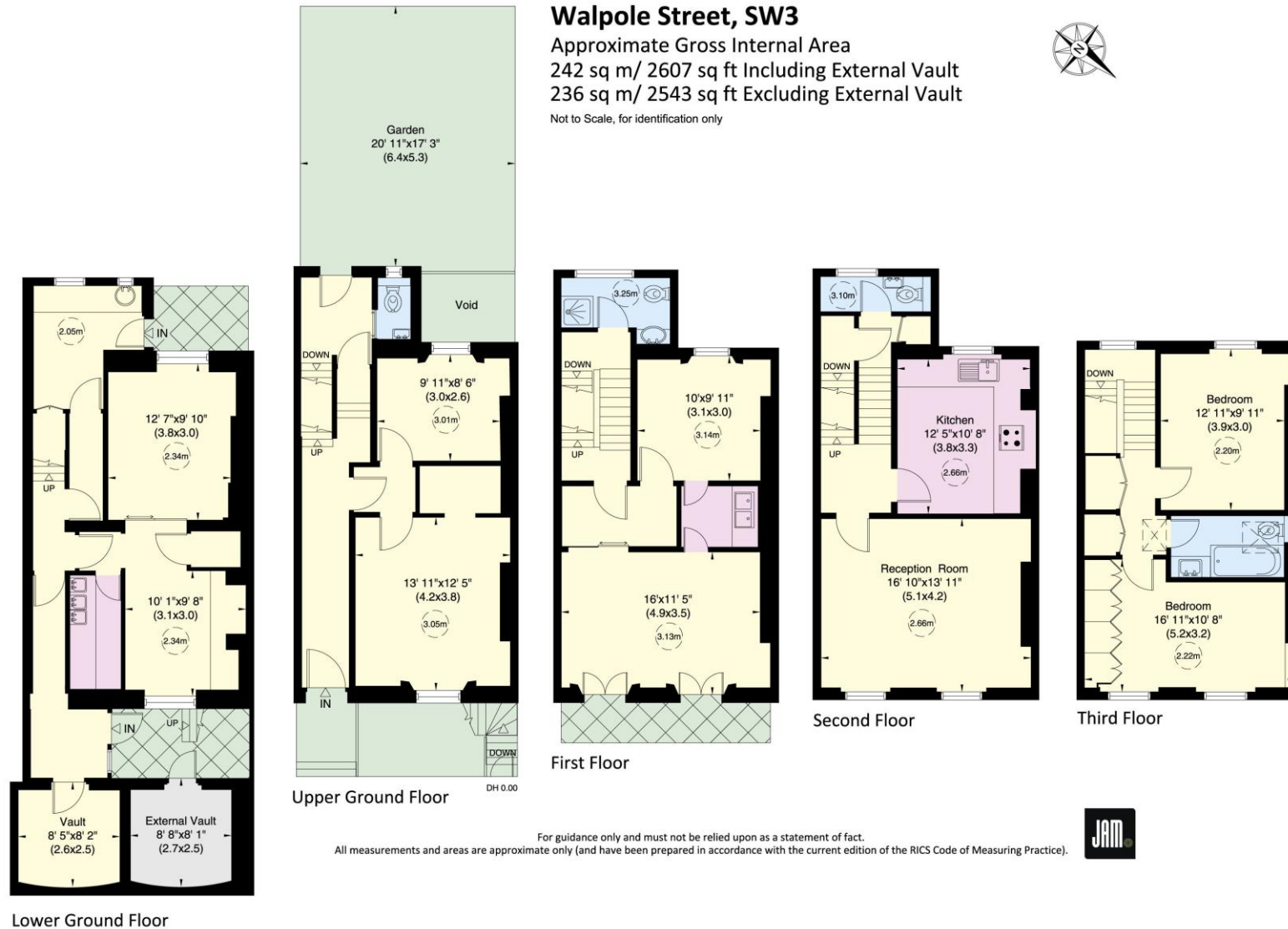
Walpole Street, SW3

Approximate Gross Internal Area

242 sq m/ 2607 sq ft Including External Vault

236 sq m/ 2543 sq ft Excluding External Vault

Not to Scale, for identification only



For guidance only and must not be relied upon as a statement of fact.
All measurements and areas are approximate only (and have been prepared in accordance with the current edition of the RICS Code of Measuring Practice).



Important notice: Ashdown Marks, their clients and any joint agents give notice that: 1: They are not authorised to make or give any representations or warranties in relation to the property either here or elsewhere, either on their own behalf or on behalf of their client or otherwise. They assume no responsibility for any statement that may be made in these particulars. These particulars do not form part of any offer or contract and must not be relied upon as statements or representations of fact. 2: Any areas, measurements or distances are approximate. The text, photographs and plans are for guidance only and are not necessarily comprehensive. It should not be assumed that the property has all necessary planning, building regulation or other consents and Ashdown Marks have not tested any services, equipment or facilities. Purchasers must satisfy themselves by inspection or otherwise.

9 Milner Street, London, SW3 2QB

Tel: +44 (0)20 7589 3353

www.ashdownmarks.co.uk

ASHDOWN MARKS
PROPERTY CONSULTANTS