



Sloane Gardens, Sloane Square SW1W

ASHDOWN MARKS  
PROPERTY CONSULTANTS

## Sloane Gardens

London, SW1W 8EA

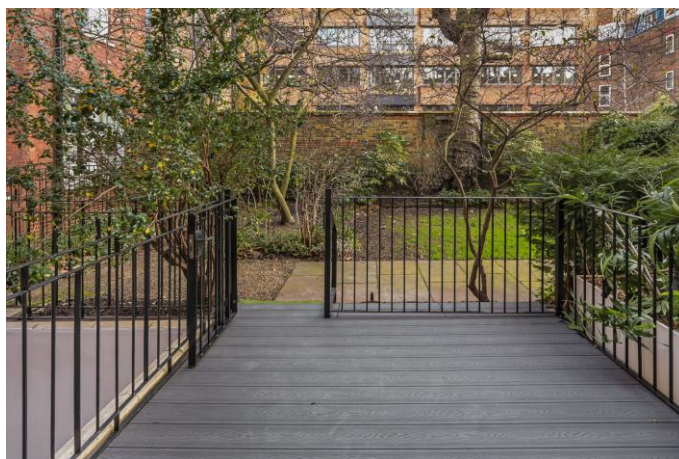
A beautifully renovated ground and lower ground floor maisonette located on an attractive residential road close to Sloane Square.

The property consists of a fantastic double reception room with high ceilings and a decorative fireplace, a dining area open plan through to a newly refurbished kitchen with doors leading onto a private terrace and communal gardens behind. There are two double bedrooms both with en suite bathrooms and built in wardrobes, access to a secondary patio area, guest cloakroom and a walk in storage closet. In addition tenants can have an option to join Cadogan Place Gardens and Tennis Courts at a separate cost.

- Large Reception and Dining Room
- 2 Double Bedrooms
- 2 En-suite Bathrooms & Guest Cloakroom
- Private Patio and Communal Garden
- New Kitchen
- Wooden Floors
- Council Tax - Band E    EPC - Rating C

Price £1,650 pw

Unfurnished





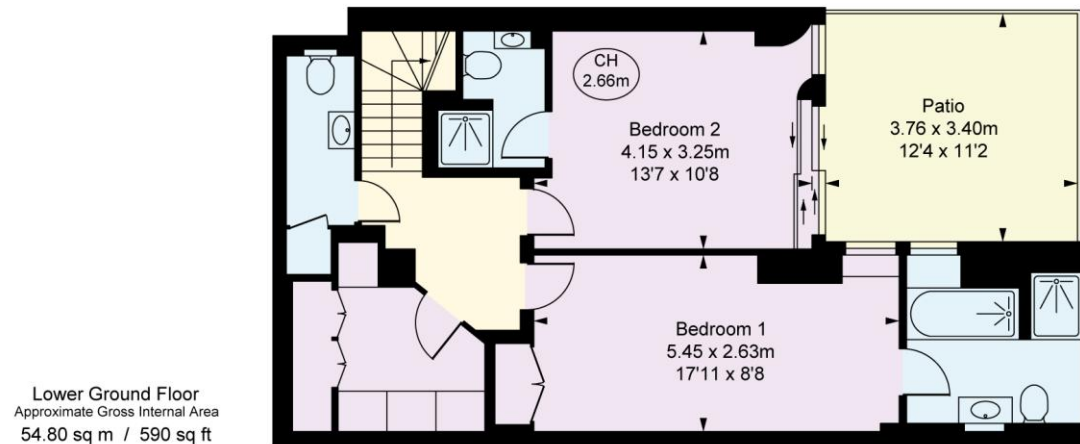
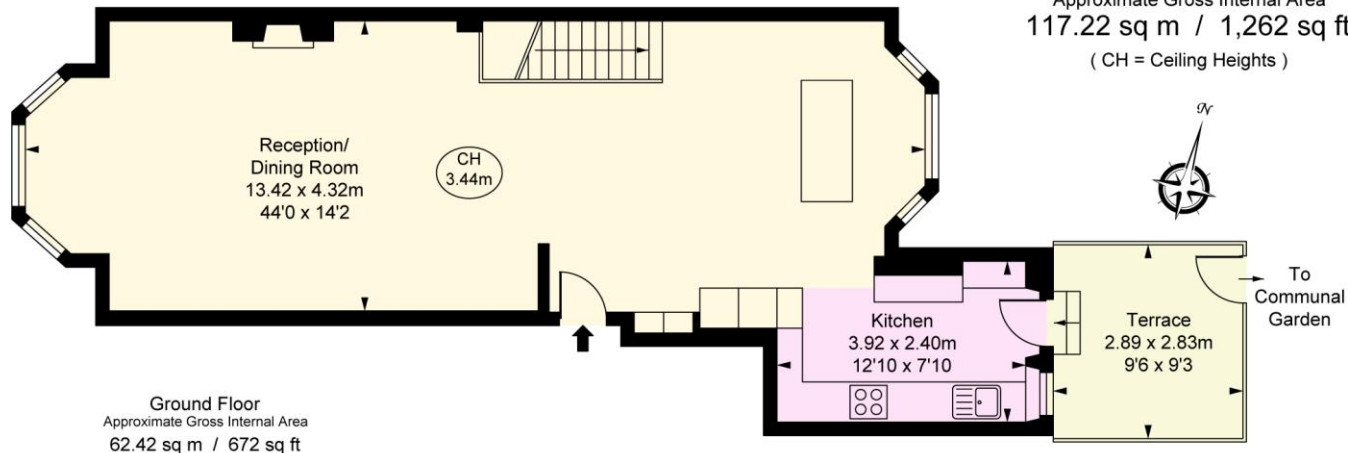




## Sloane Gardens, SW1W

Approximate Gross Internal Area  
117.22 sq m / 1,262 sq ft

( CH = Ceiling Heights )



This plan is not to scale. It is for guidance and not for valuation purposes.  
All measurements and areas are approximate only, and have been prepared in accordance with the current edition of the RICS Code of Measuring Practice.  
© Fulham Performance

Important notice: Ashdown Marks, their clients and any joint agents give notice that: 1: They are not authorised to make or give any representations or warranties in relation to the property either here or elsewhere, either on their own behalf or on behalf of their client or otherwise. They assume no responsibility for any statement that may be made in these particulars. These particulars do not form part of any offer or contract and must not be relied upon as statements or representations of fact. 2: Any areas, measurements or distances are approximate. The text, photographs and plans are for guidance only and are not necessarily comprehensive. It should not be assumed that the property has all necessary planning, building regulation or other consents and Ashdown Marks have not tested any services, equipment or facilities. Purchasers must satisfy themselves by inspection or otherwise.

**9 Milner Street, London, SW3 2QB**

**Tel: 020 7589 3353**

**[www.ashdownmarks.co.uk](http://www.ashdownmarks.co.uk)**

**ASHDOWN MARKS**  
PROPERTY CONSULTANTS