



Alexander Square, London SW3

ASHDOWN MARKS
PROPERTY CONSULTANTS

Alexander Square

London, SW3 2AU

A handsome Grade II listed double-fronted period house (3,084 sq.ft / 286 sq.m) occupying a prominent corner position in this highly regarded address.

The house offers well-balanced family accommodation arranged over four floors, with four generous bedrooms and excellent entertaining space. The rare double fronted aspect provides an abundance of natural light and a wonderful sense of proportion throughout. It was also the home of George Godwin (1813–1888), the distinguished architect, journalist and social reformer.

Although now requiring refurbishment, the property offers tremendous scope to create an exceptional family home. Of particular note are the attractive reception hall, and a long (6m) west facing first floor terrace enjoying attractive views over neighbouring gardens.







Alexander Square is one of the area's most attractive garden squares, conveniently situated for the excellent amenities of Brompton Cross, South Kensington and Knightsbridge.

- Reception Hall
- Drawing Room
- Dining Room
- Sitting Room
- Study
- Kitchen/ Breakfast Room
- Principal Bedroom with En Suite Bathroom and Dressing Room
- Three Further Double Bedrooms
- Further Bathroom
- Cloakroom
- Large Utility/ Store Room
- Front Garden and Terrace
- Access to the private gardens of Alexander Square and Thurloe Square by separate negotiation
- Council Tax: Band H EPC: Rating D



Guide Price: £4,500,000 Freehold

Alexander Square, SW3

APPROX. GROSS INTERNAL AREA *
3084 Sq Ft - 286.6 Sq M
(EXCLUDING VAULTS)

VAULTS
133 Sq Ft - 12.36 Sq M

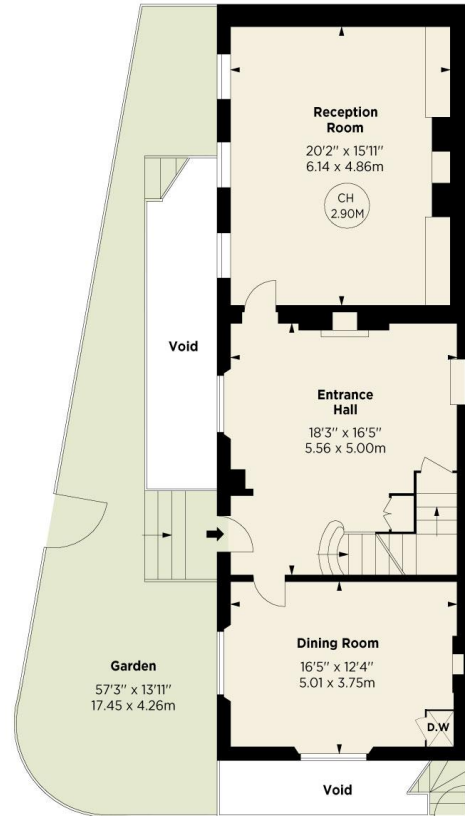
TOTAL APPROX. GROSS INTERNAL AREA *
3217 Sq Ft - 298.96 Sq M

Key :
CH - Ceiling Height
⊗ - Under 1.5m

This floorplan is for GUIDANCE ONLY and NOT FOR VALUATION purposes.



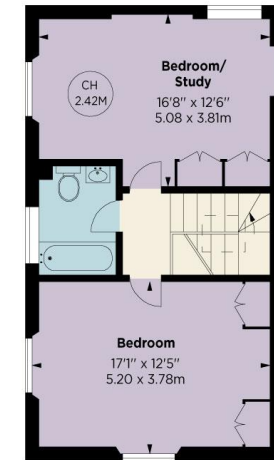
LOWER GROUND FLOOR



RAISED GROUND FLOOR



FIRST FLOOR



SECOND FLOOR



ALEX WINSHIP
Photogrammetry
© Alex Winship Photography Ltd.

* Floorplan for guidance only, not to scale or valuation purposes. It must not be relied upon as a statement of fact. All measurements and areas are approximate and have been prepared in accordance with the current edition of the RICS Code of Measuring Practice.



Important notice: Ashdown Marks, their clients and any joint agents give notice that: 1: They are not authorised to make or give any representations or warranties in relation to the property either here or elsewhere, either on their own behalf or on behalf of their client or otherwise. They assume no responsibility for any statement that may be made in these particulars. These particulars do not form part of any offer or contract and must not be relied upon as statements or representations of fact. 2: Any areas, measurements or distances are approximate. The text, photographs and plans are for guidance only and are not necessarily comprehensive. It should not be assumed that the property has all necessary planning, building regulation or other consents and Ashdown Marks have not tested any services, equipment or facilities.

Ashdown Marks

9 Milner Street SW3 2QB

Tel: +44 (0)20 7589 3353

www.ashdownmarks.co.uk

ASHDOWN MARKS
PROPERTY CONSULTANTS