



Fulham Road, South Kensington SW3

ASHDOWN MARKS  
PROPERTY CONSULTANTS



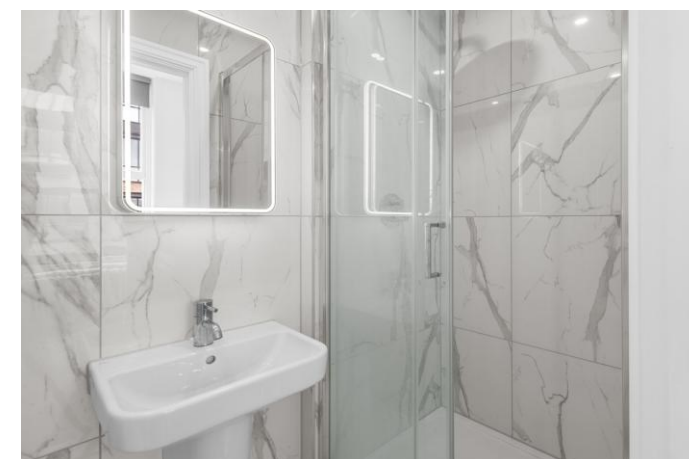
Fulham Road

South Kensington, SW3 6HR

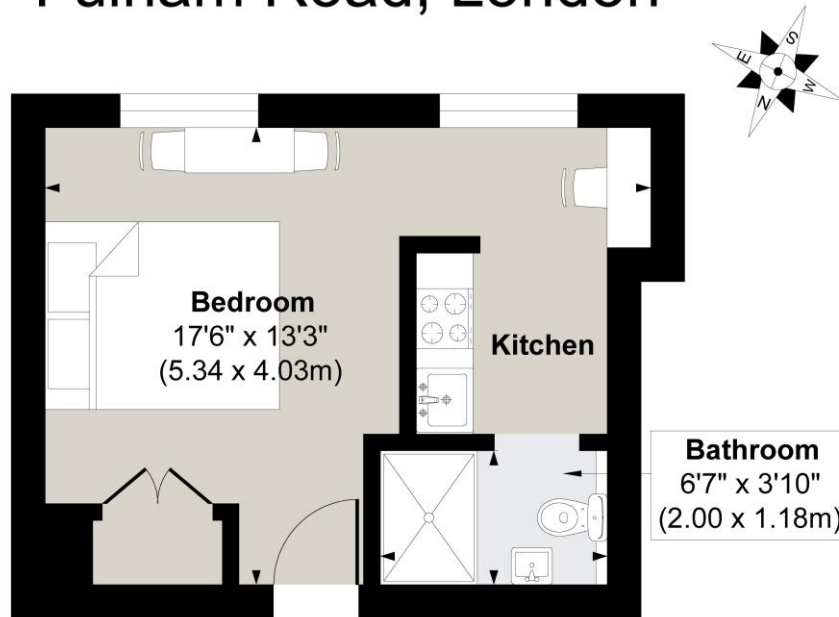
A bright and well appointed studio apartment located on the first floor of a period building approximately 600 metres from the shops and transport facilities of South Kensington. Utility bills and council tax are included in the rent.

- Studio
- Kitchenette
- Shower Room
- First Floor
- Excellent Location
- Utilities and Council Tax included in rent
- EPC - Rating C

**Part Furnished Price: £456 per week**



# Fulham Road, London



**TOTAL: 219 sq. ft, 20.37 m<sup>2</sup>**  
EXCLUDED AREAS: Walls: 64 sq. ft, 6 m<sup>2</sup>,

Produced for Ashdown Marks by Finest Spaces  
[www.finestspaces.co.uk](http://www.finestspaces.co.uk) | © Finest Spaces Studio Ltd

All measurements are approximate. This floor plan is for illustrative purposes only and should not be relied upon for accuracy. Finest Spaces Studio Ltd accepts no liability for errors or omissions. Floor area figures are estimates and not guaranteed

Important notice: Ashdown Marks, their clients and any joint agents give notice that: 1: They are not authorised to make or give any representations or warranties in relation to the property either here or elsewhere, either on their own behalf or on behalf of their client or otherwise. They assume no responsibility for any statement that may be made in these particulars. These particulars do not form part of any offer or contract and must not be relied upon as statements or representations of fact. 2: Any areas, measurements or distances are approximate. The text, photographs and plans are for guidance only and are not necessarily comprehensive. It should not be assumed that the property has all necessary planning, building regulation or other consents and Ashdown Marks have not tested any services, equipment or facilities. Purchasers must satisfy themselves by inspection or otherwise.

**9 Milner Street, London, SW3 2QB**

**Tel: +44 (0)20 7589 3353**

**[www.ashdownmarks.co.uk](http://www.ashdownmarks.co.uk)**

**ASHDOWN MARKS**  
PROPERTY CONSULTANTS