



Lennox Gardens, Knightsbridge SW1X

ASHDOWN MARKS
PROPERTY CONSULTANTS

Lennox Gardens

Knightsbridge SW1X

An immaculately presented west facing apartment situated in this Grade II listed period building, boasting a wide entrance hallway, two double bedrooms, two ensuite bathrooms, cloakroom, separate kitchen and large drawing room with high ceilings and views over the communal garden.

The property further comprises wooden flooring throughout, access to the communal gardens and is the only building in the square to have a porter.

- Two double bedrooms
- Two bathrooms (both en suite)
- Large west facing drawing room
- Separate kitchen
- Wooden flooring throughout
- Cloakroom
- Porter
- Proximity to Sloane Square and South Kensington
- Access to communal gardens

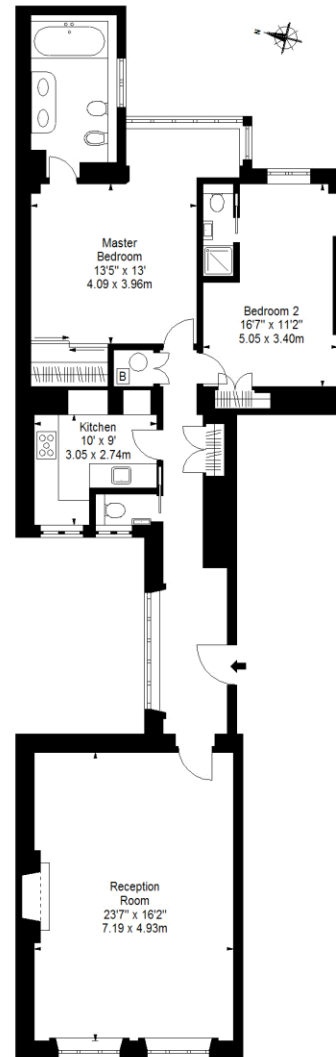
Price £1,650 pw Unfurnished





LENNOX GARDENS, SW1X

Approx. Gross Internal Area *
1,216 Ft² - 112.97 M²



Ground Floor

Illustration For Identification Purposes Only, Not to Scale
* As Defined by RICS - Code of Measuring Practice
Copyright © Blueprint Floorplans Ltd. 2016
info@blueprintfloorplans.co.uk

Important notice: Ashdown Marks, their clients and any joint agents give notice that: 1: They are not authorised to make or give any representations or warranties in relation to the property either here or elsewhere, either on their own behalf or on behalf of their client or otherwise. They assume no responsibility for any statement that may be made in these particulars. These particulars do not form part of any offer or contract and must not be relied upon as statements or representations of fact. 2: Any areas, measurements or distances are approximate. The text, photographs and plans are for guidance only and are not necessarily comprehensive. It should not be assumed that the property has all necessary planning, building regulation or other consents and Ashdown Marks have not tested any services, equipment or facilities. Purchasers must satisfy themselves by inspection or otherwise.

9 Milner Street, London, SW3 2QB

Tel: 020 7589 3353

www.ashdownmarks.co.uk

ASHDOWN MARKS
PROPERTY CONSULTANTS