



Chelsea Embankment, Chelsea SW3

ASHDOWN MARKS
PROPERTY CONSULTANTS

Chelsea Embankment

Chelsea, SW3

The flat forms part of a large handsome end of terrace period building situated on the corner with Swan Walk. Its unique position offers not only splendid south views over the Thames across to Battersea Park but fine westerly views overlooking the Chelsea Physic Garden. 1,805 sq.ft/167 sq.m - New 125 Year Lease.

Originally built as a private house by Lord Wentworth in 1878, the building has been intelligently rearranged and meticulously refurbished to exacting standards, creating five well appointed apartments.

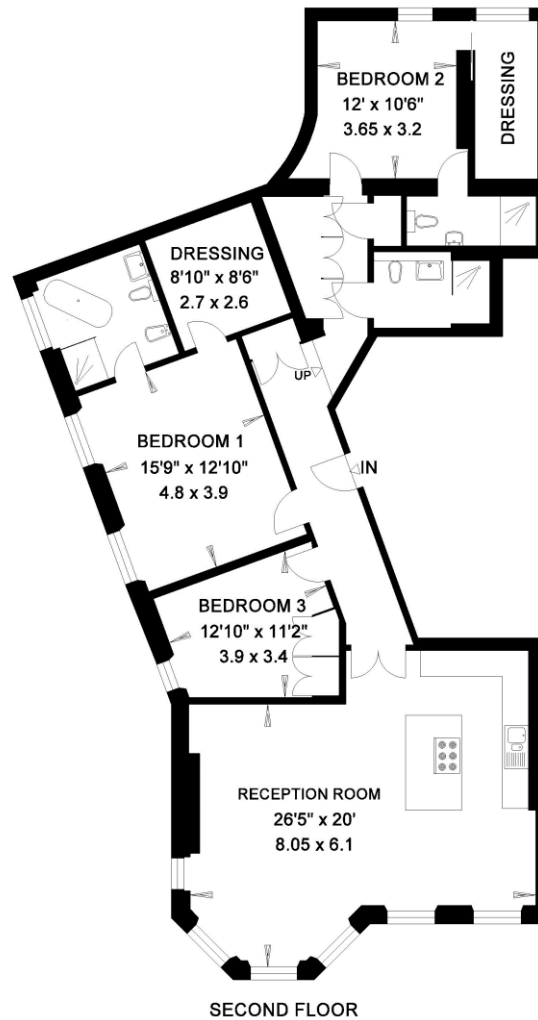
- Drawing Room with Wooden Floors
- Kitchen designed by `Roundhouse`
- Master Bedroom with En Suite Bathroom & Dressing Room
- Two Further Bedrooms
- Two Further Bathrooms
- Under Floor Heating & Air Conditioning
- New Timber Framed Sash Windows with Double Glazing throughout
- New Lift & Newly refurbished Common Entrance Hall and Stairs
- EPC Rating: Band B

Price £3,850,000 Leasehold





CHELSEA EMBANKMENT
LONDON SW3
Gross Internal Area = 145 sq. metres
1567 sq. feet



Important notice: Ashdown Marks, their clients and any joint agents give notice that: 1: They are not authorised to make or give any representations or warranties in relation to the property either here or elsewhere, either on their own behalf or on behalf of their client or otherwise. They assume no responsibility for any statement that may be made in these particulars. These particulars do not form part of any offer or contract and must not be relied upon as statements or representations of fact. 2: Any areas, measurements or distances are approximate. The text, photographs and plans are for guidance only and are not necessarily comprehensive. It should not be assumed that the property has all necessary planning, building regulation or other consents and Ashdown Marks have not tested any services, equipment or facilities. Purchasers must satisfy themselves by inspection or otherwise.

9 Milner Street, London, SW3 2QB

Tel: +44 (0)20 7589 3353

www.ashdownmarks.co.uk

ASHDOWN MARKS
PROPERTY CONSULTANTS