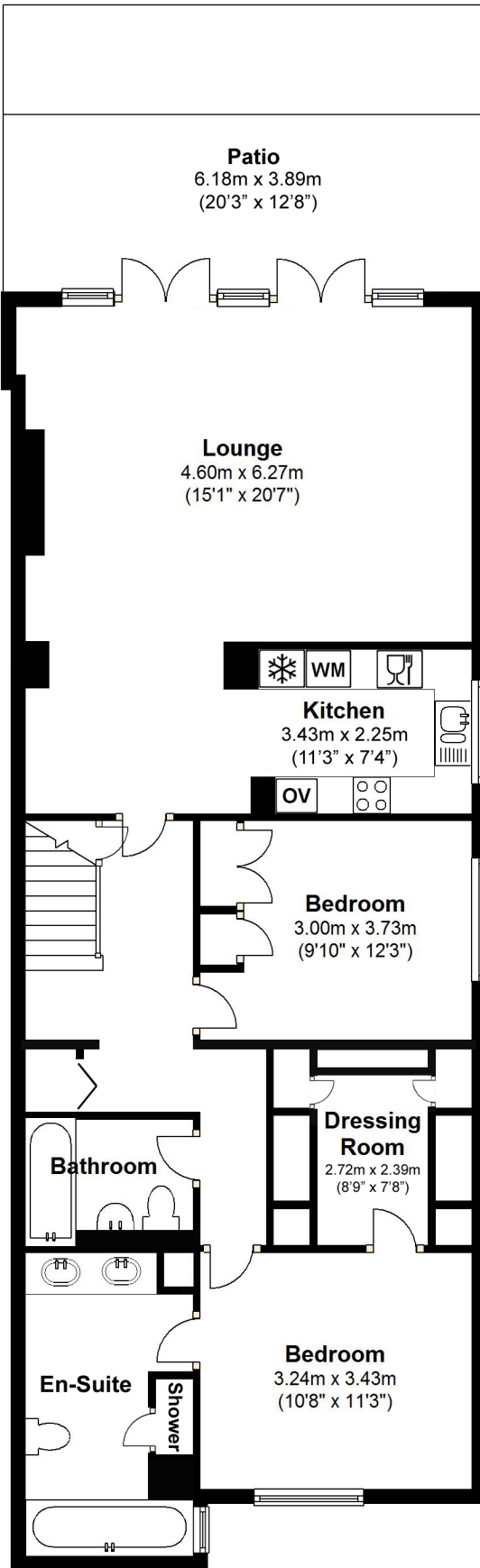


Flat 5, 46 Harcourt Terrace, London, SW10 9JR

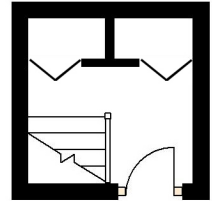
Lower Ground Floor

Approx. 95.6 sq. metres (1028.9 sq. feet)



Upper Ground Floor

Approx. 4.2 sq. metres (45.4 sq. feet)



Total area: approx. 99.8 sq. metres (1074.3 sq. feet)

Whilst every care is made to ensure the drawing is accurate
it is not an architectural plan and is for guidance only