

THE VIOLET

Combining open plan living with a high quality design, this two bedroom terrace or semi detached house is ideal for first time buyers and downsizers.

A hallway leads into a contemporary open plan living room and kitchen. French doors opening from the living area onto the rear garden. Ground floor WC and store cupboard.

To the first floor there are two spacious bedrooms and the stylish bathroom with shower attachment over the bath.



THE VIOLET FEATURES

Benefit from Choose your Floorplan

Open plan living with
french doors to the
rear garden

Modern fitted kitchen

Stylish bathroom

Private driveway



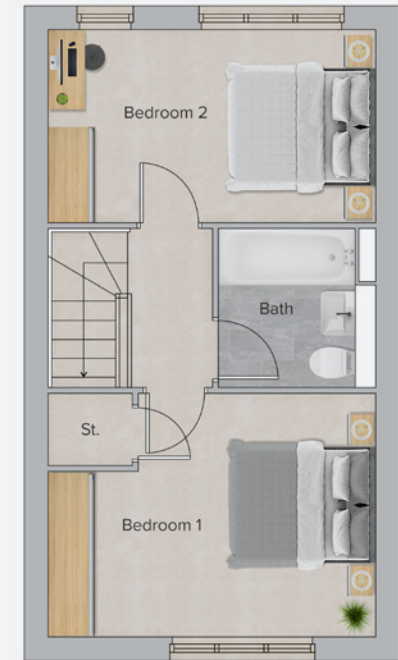
GROUND FLOOR - OPTION 1

	METRES	FEET & INCHES
Kitchen	1.92 x 3.35	6' 4" x 11' 0"
Living/Dining	4.03 x 4.04	13' 3" x 13' 3"
WC	0.91 x 1.72	3' 0" x 5' 8"



GROUND FLOOR - OPTION 2

	METRES	FEET & INCHES
Kitchen area	1.92 x 3.35	6' 4" x 11' 0"
Living/Dining	4.03 x 4.04	13' 3" x 13' 3"
WC	0.91 x 1.72	3' 0" x 5' 8"



FIRST FLOOR

	METRES	FEET & INCHES
Bedroom 1	4.03 x 2.96	13' 3" x 9' 9"
Bedroom 2	4.03 x 2.36	13' 3" x 7' 9"
Bathroom	1.93 x 1.97	6' 4" x 6' 6"

