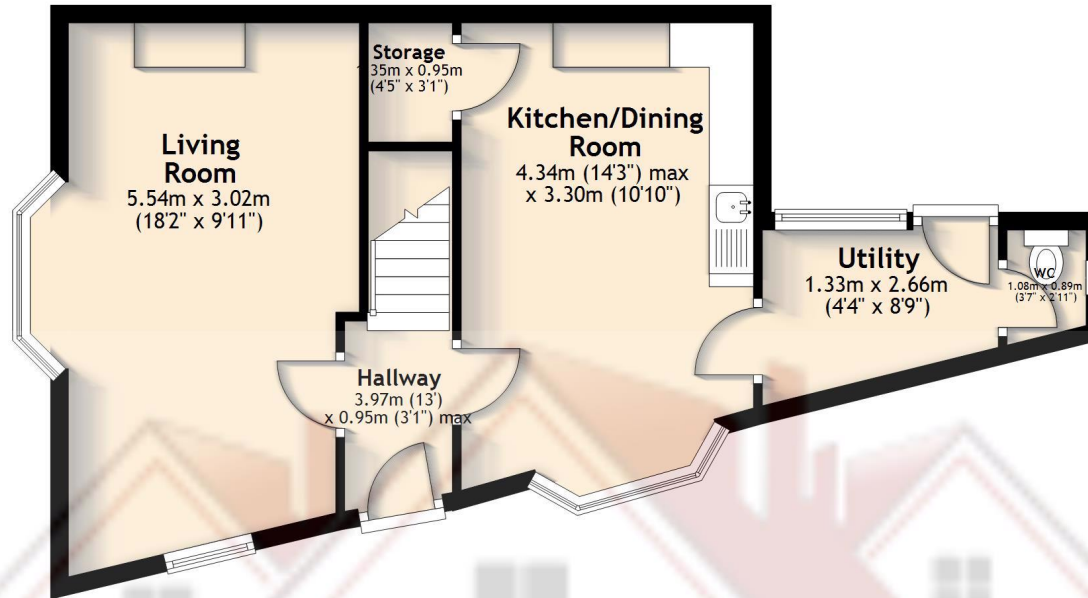


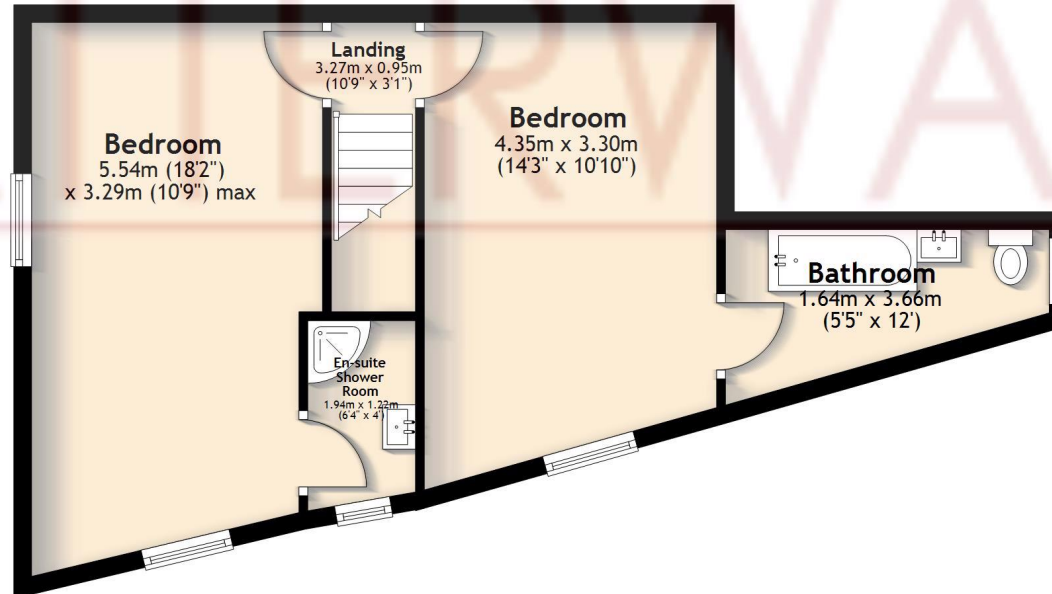
Ground Floor

Approx. 47.7 sq. metres (513.9 sq. feet)



First Floor

Approx. 46.9 sq. metres (505.1 sq. feet)



Total area: approx. 94.7 sq. metres (1019.1 sq. feet)

The floor plans are for illustrative purposes only and should be used as such. The actual dimensions and layout of the property may vary from those shown in the floor plans.
Plan produced using PlanUp.