



bonners & babingtons

Little Marlow Road  
Marlow





**Little Marlow Road  
Marlow  
Buckinghamshire  
SL7 1HX**

- 
- Tenure: Leasehold
  - Price Guide: £315,000
  - Lease Remaining: 938 years
  - Council Tax Band: C
  - Local Authority: BCC
  - EPC Rating: C



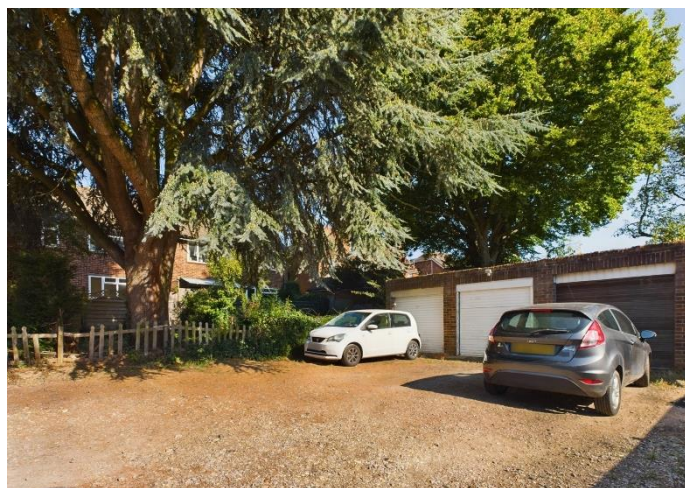


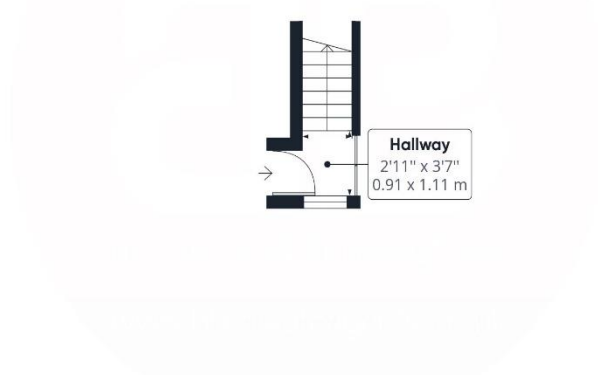
Situated about a mile east of the town centre is this well presented, light and airy, two double bedroom first floor maisonette which is offered for sale with no onward chain. The accommodation comprises, entrance hall, lounge/diner, good sized kitchen, two double bedrooms and bathroom with corner bath. There is a large loft, gas central heating, double glazed windows, own private garden area and garage in block to the rear of the property with residents` parking.

Marlow town centre is a thriving and stylish riverside community with a comprehensive range of shops and excellent pubs and restaurants. Nearby Marlow Station has a regular train service to London Paddington via Maidenhead (from 1hr 5 mins) with links to the City of London, further enhanced with the recently opened Crossrail Link from Maidenhead. Access to the M4 and M40 is via the A404(M) and London Heathrow is about 22 miles away.

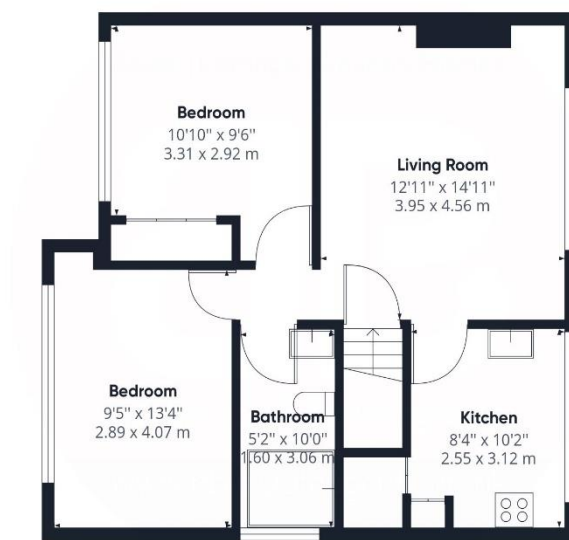
There is a wide range of educational and recreational facilities in the area. Excellent local schools are numerous and include Sir William Borlase in Marlow.

**A well presented TWO DOUBLE BEDROOM first floor maisonette with GARAGE in block, residents parking, PRIVATE GARDEN and NO ONWARD CHAIN.**





Ground Floor



Floor 1



Approximate total area<sup>(1)</sup>

661.11 ft<sup>2</sup>

61.42 m<sup>2</sup>

(1) Excluding balconies and terraces

While every attempt has been made to ensure accuracy, all measurements are approximate, not to scale. This floor plan is for illustrative purposes only.

GIRAFFE360



bonners & babingtons

3 Anglers Court, Spittal Street,  
Marlow, Bucks, SL7 3HJ



01628 333800

www.bb-estateagents.co.uk

#### Disclaimer

We endeavour to make our particulars accurate and reliable. They are for guidance only and are intended to give a fair overall summary of the property. They do not form part of any contract or offer, and should not be relied upon as a statement or representation of fact. Measurements, areas and distances are approximate and photographs provided for guidance only. No undertaking is given as to the structural condition of the property, or any necessary consents, or the operating ability or efficiency of any service, system or appliance. Prospective purchasers must satisfy themselves with regard to each of these points. If there is any particular aspect of the property about which you would like further information, please contact us, especially, before you travel to the property. B2170