



Winwood Close, Deanshanger, MK19 6GQ

Price £300,000 Freehold



Offered for sale with no onward chain, this well-presented and generously proportioned terraced house boasts two reception rooms, two bedrooms, off-road parking, and an enclosed rear garden. Situated in the village of Deanshanger and conveniently located just a short drive from Milton Keynes.





# Winwood Close

## Deanshanger, MK19 6GQ



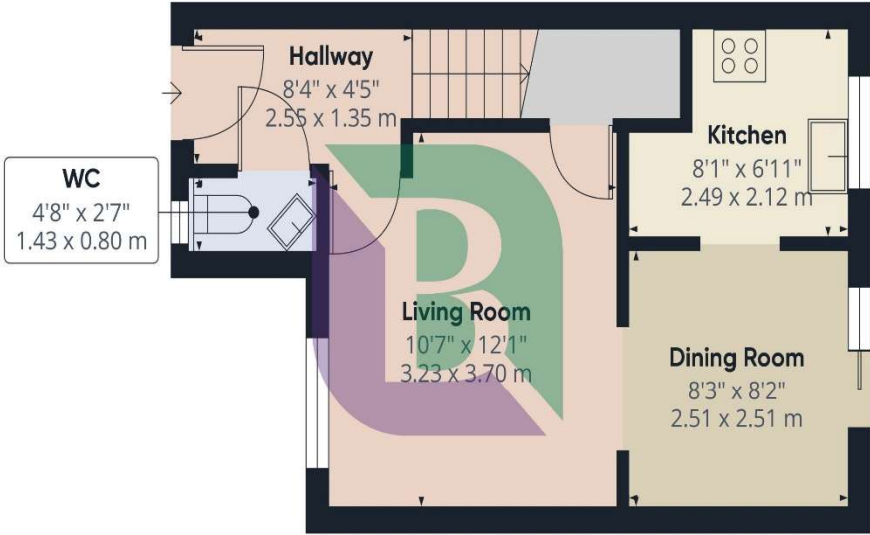
Deanshanger is a charming village set amidst the beautiful West Northamptonshire countryside, offering excellent road links to Milton Keynes, Buckingham, and Northampton. For cyclists and walkers, a footbridge provides easy access to Milton Keynes' extensive redway system. The village features a variety of amenities, including a village hall, community centre, doctor's surgery, library, local shops, take aways, a pub, and the nearby Kingfisher Golf & Country Club. Families will appreciate the proximity of pre-schools, primary, and secondary schools, making it an ideal location for all generations.



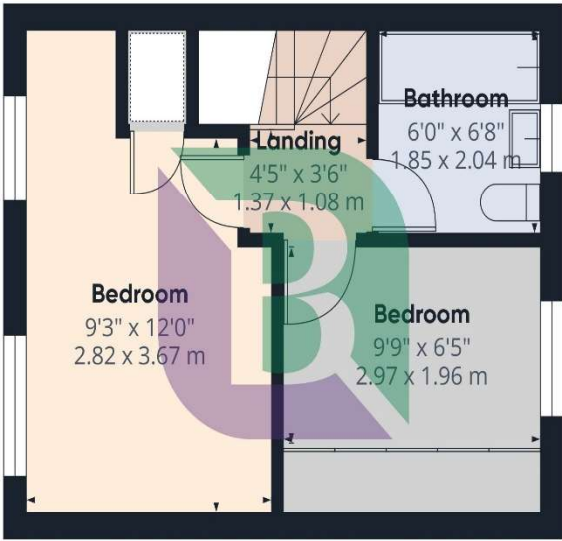
You enter the property into the hallway, where stairs rise to the first floor. Doors lead to the cloakroom and the living room, which benefits from an under stairs storage cupboard. An arch way connects the living room to the dining room, which features patio doors opening to the rear garden and another arch way leading to the kitchen which is fitted with a range of units, built in oven, hob and space for white goods.

From the first-floor landing, doors lead to two generously sized bedrooms and the bathroom. The primary bedroom benefits from two windows allowing natural light to flood in, while the second bedroom features built-in wardrobes with sliding mirrored doors. The bathroom is fitted with a white suite and finished with complementary tiled splashbacks.

Externally to the rear is an enclosed garden with decking and the remainder mainly laid to lawn. To the front is slated areas, path to front door and off-road parking.



Ground Floor



Floor 1



Approximate total area<sup>(1)</sup>  
586.09 ft<sup>2</sup>  
54.45 m<sup>2</sup>

(1) Excluding balconies and terraces

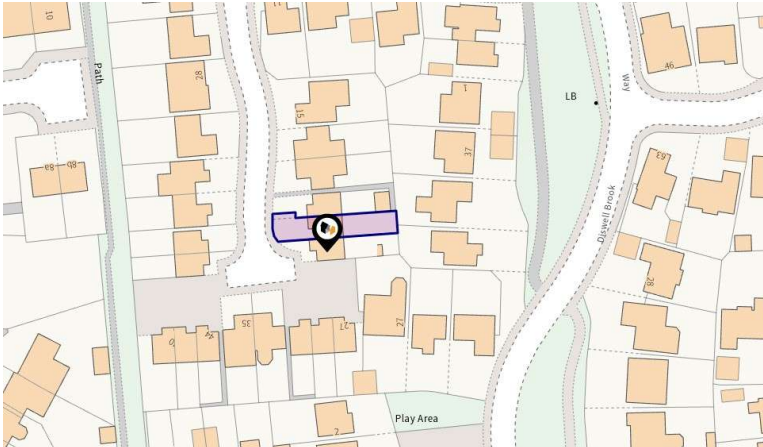
While every attempt has been made to ensure accuracy, all measurements are approximate, not to scale. This floor plan is for illustrative purposes only.

Calculations are based on RICS IPMS 3C standard.

GIRAFFE360







| Energy Efficiency Rating                           |                         |           |
|--|-------------------------|-----------|
|  | Current                 | Potential |
| <i>Very energy efficient - lower running costs</i> |                         |           |
| (92 Plus) <b>A</b>                                 |                         |           |
| (81-91) <b>B</b>                                   |                         | 88        |
| (69-80) <b>C</b>                                   | 71                      |           |
| (55-68) <b>D</b>                                   |                         |           |
| (39-54) <b>E</b>                                   |                         |           |
| (21-38) <b>F</b>                                   |                         |           |
| (1-20) <b>G</b>                                    |                         |           |
| <i>Not energy efficient - higher running costs</i> |                         |           |
| <b>England &amp; Wales</b>                         | EU Directive 2002/91/EC |           |



Notice

Please note we have not tested any apparatus, fixtures, fittings, or services. Interested parties must undertake their own investigation into the working order of these items. All measurements are approximate and photographs provided for guidance only.



6 High Street  
Woburn Sands  
Buckinghamshire  
MK17 8RL

