



Holst Crescent, Old Farm Park,  
Price £725,000 Freehold



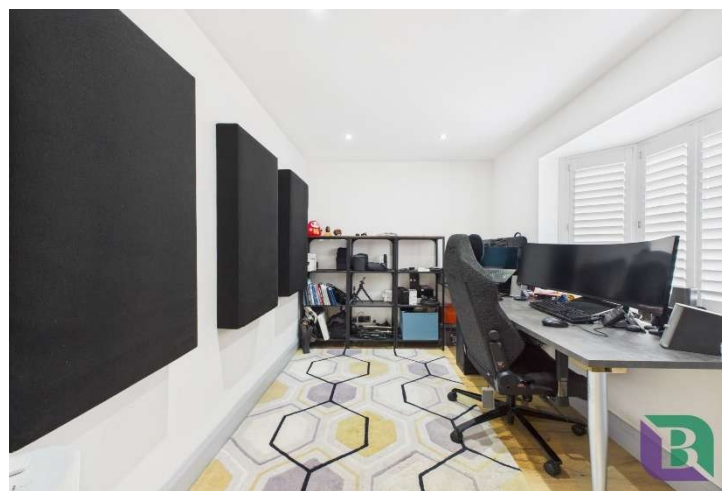
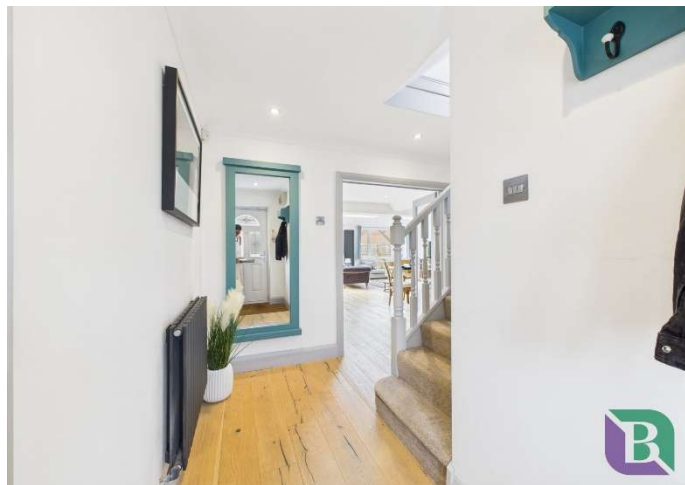
Located in the sought-after area of Old Farm Park, this beautifully presented four-bedroom detached property offers spacious and versatile living ideal for modern family life.  
The heart of the home is an impressive extended open-plan family area featuring bi-folding doors.





# Holst Crescent

## Old Farm Park, MK7 8QN



- Beautifully Presented Four Bedroom Detached Property
- Double Garage with Driveway
- Study
- Extended Family Area with Bi Fold Doors to Garden
- En-Suite To Master Bedroom
- Utility Room
- Cloakroom



Additional ground floor highlights include a separate study, ideal for home working, and a cloakroom for added convenience.

Upstairs, you'll find four well-proportioned bedrooms, with the master benefiting from an en-suite shower room. A modern family bathroom serves the remaining bedrooms.

Externally, the property boasts a generous rear garden, a double garage, and ample driveway parking.

Old Farm Park is in the South East corner of Milton Keynes with well thought of primary and secondary schools nearby. As well as a local Tesco Express, all the shops and facilities of Milton Keynes are within easy reach. Milton Keynes Central and Bletchley stations offer trains to Euston in under 35 minutes, and there is ready access to the M1 and A5 road systems.





## Notice

Please note we have not tested any apparatus, fixtures, fittings, or services. Interested parties must undertake their own investigation into the working order of these items. All measurements are approximate and photographs provided for guidance only.

6 High Street  
Woburn Sands  
Buckinghamshire  
MK17 8RL

