



Walton Road, Wavendon, MK17 8LH

Price £475,000 Freehold



A spacious 1960's detached family home in the village of Wavendon, this home offers a rare and unique opportunity for renovation and further development for those looking to create a bespoke family home.



Walton Road

Wavendon, MK17 8LH



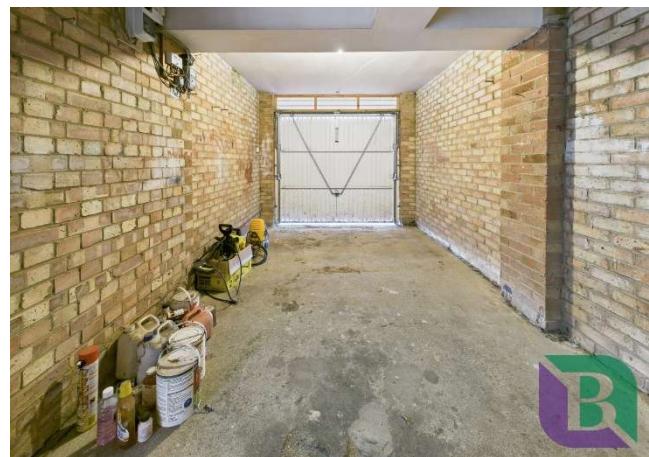
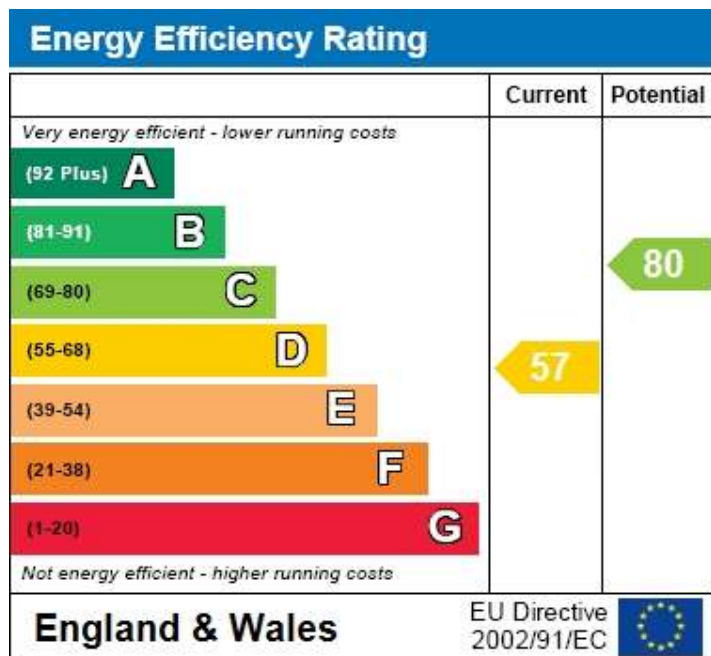
Wavendon is located between the modern City of Milton Keynes and old town of Woburn Sands. In close proximity is a popular gastro pub, church, recreation ground, community centre and garden centres. Nearby is the Kingston Retail Park with a range of shops, large supermarket and restaurants or the old town of Woburn Sands with a variety of shops, boutiques, restaurants and pubs. Wavendon is ideally located giving good access to A421 Bedford Bypass and the M1.



Located on a generous sized plot and set back from the road, this detached 1960's build offers an exciting opportunity to revamp and create your dream bespoke home. A well proportioned plot size with front gated drive and gardens, sets a delightful impression towards what this home could become. The internal accommodation greets you with an entrance porch and hall way, internal door with access through to the garage, lending itself perfect for the potential to convert into. a well proportioned kitchen with boiler cupboard and a 20ft wide lounge diner with double doors leading out to the two part sizable garden. Upstairs the home boasts three double bedrooms, a walk in shower room and separate cloakroom

Positioned in a quiet and established residential area, this property is further benefited by being marketed for sale with no upper chain, a great opportunity for a buyer to come in and move quickly!





Notice

Please note we have not tested any apparatus, fixtures, fittings, or services. Interested parties must undertake their own investigation into the working order of these items. All measurements are approximate and photographs provided for guidance only.



6 High Street
Woburn Sands
Buckinghamshire
MK17 8RL

