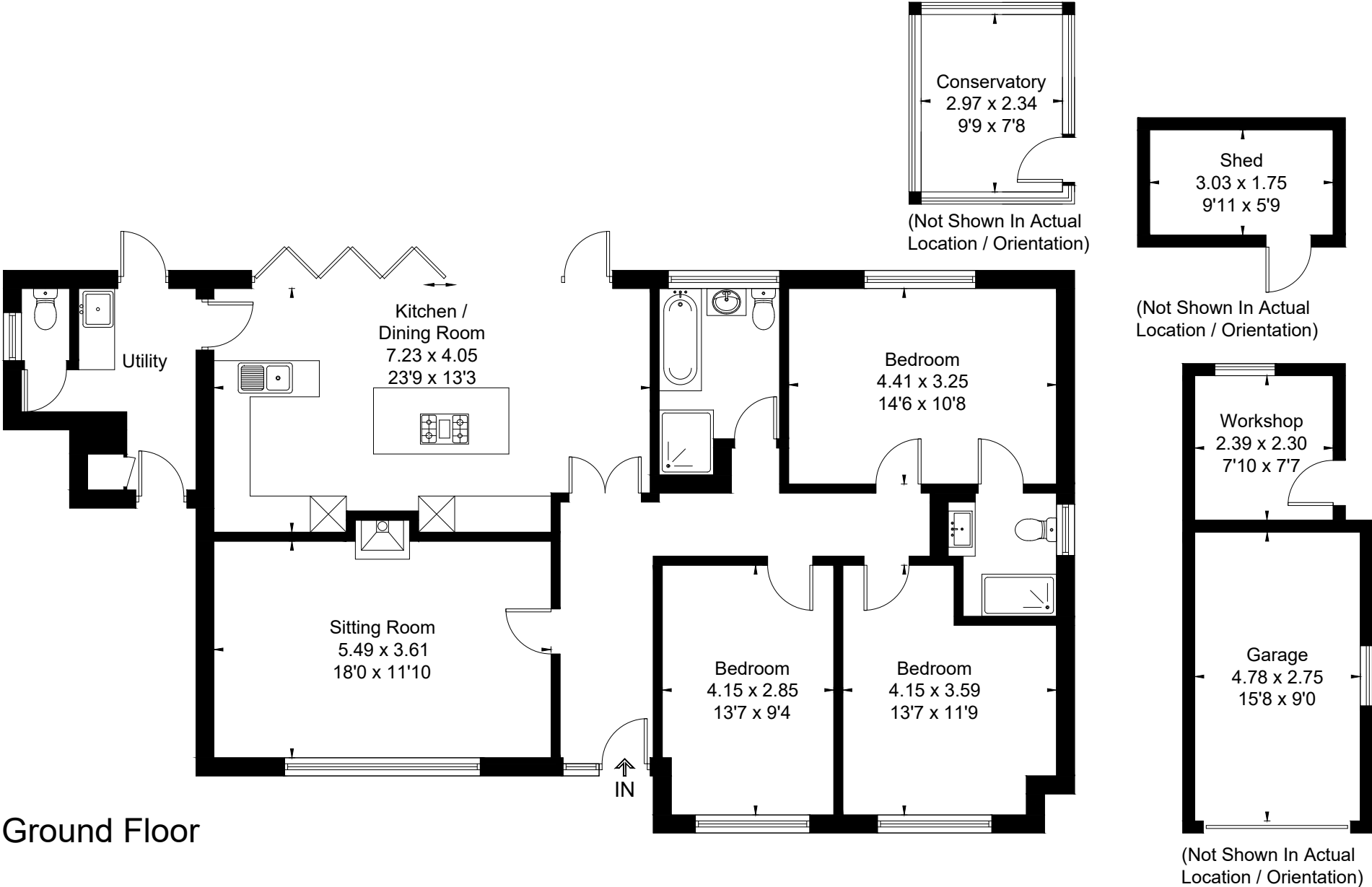


Approximate Floor Area = 125.2 sq m / 1348 sq ft  
Outbuildings = 26.1 sq m / 281 sq ft  
Total = 151.3 sq m / 1629 sq ft (Including Garage / Excluding Shed)



Ground Floor



This floor plan has been drawn in accordance with RICS Property Measurement 2nd edition.  
All measurements, including the floor area, are approximate and for illustrative purposes only. @fourwalls-group.com #93373