



TOCADA HOUSE, HAM ROAD, LIDDINGTON

**BREARLEY & RICH**  
ESTATE AGENTS



## **Tocada House, Ham Road, Liddington, Swindon, SN4 0HH**

**M4 (Junction 15) Approximately 2.5 miles. Marlborough 10 miles, Rail link via Hungerford (13 miles) or Swindon (6 miles) to London Paddington from approximately 50 minutes**

A substantial period house offering accommodation of good proportions throughout with large gardens and extensive views. There may also be potential to extend in to existing loft rooms and to the side of the house towards the garage (planning permission for annex granted in 2023).

- \* Reception hall \* Superb kitchen/family/dining room with wood burner \* Sitting room with open fireplace \* Dining room \* Study \***
- \* 5 bedrooms \* 2 en suite bath/shower rooms \* Family bathroom \* Utility room \* Cloakroom \* Wonderful views \***
- \* Extensive lofts with good ceiling heights \* Double garage \* Potential to extend (planning permission for annex granted) \***
- \* Plot of approximately 0.77 acres \***



### **LIDDINGTON**

Liddington is located just a short drive from Marlborough, Cirencester and Swindon. Mainline Rail services to London Paddington are accessible from Swindon or Hungerford stations. Junction 15 of the M4 is nearby along with the A419 and A420 giving access to Oxford and the A34. The village of Liddington includes a church, public house and village hall. The area provides excellent opportunities for exploration with the Ridgeway national trail and Liddington Castle close by.

Further local facilities can be found in nearby Wanborough or Aldbourne, which both have primary schools and further public houses. There is a doctors surgery in Wanborough and a post office in Aldbourne. Pinewood School is approximately 5 miles away.





## THE PROPERTY

This substantial detached house is believed to have been built in the 1930's and benefits from features of the time including high ceilings throughout. The property has most recently been extended to the rear to create a wonderful dining/family room with wood burning stove and French doors on to the terrace, with a bedroom with balcony and an en suite shower room above.

Entering the house through the large oak front door, the generous and welcoming reception hall has exposed timber flooring and is filled with light from a large window on the half landing. To the right of the hall the sitting room has an open "Jetmaster" type fireplace and a bay window with French doors on to a private and level lawn providing a lovely seating area. To the left of the hall there is a good dining room and both this room and the sitting room also benefit from lovely views. Finally off the hall a door leads in to the hub of the house, the large kitchen/family room. The kitchen has space for a range style cooker and is fitted with a good number of wall and floor units with granite work tops and a tiled floor. This spacious room is open to the bright dining/family room with plenty of space for a dining table and sitting area in front of the wood burning stove.

Off the kitchen there is also a useful utility/boot room with a door to outside and a large study/play room which again benefits from lovely views. There is a cloakroom off the hall.

The period staircase leads up to a spacious landing and to four bedrooms at the front of the house, again placed to make the most of the views. The main bedroom has a lovely and light en suite bathroom with a separate shower. The fifth bedroom provides a lovely double room to the rear of the house and has an en suite shower room. Four of the bedrooms have fitted wardrobe storage.





### **THE PROPERTY, continued.**

From the first floor landing a further staircase leads up to the second floor attic room. This open loft space has windows to the front and rear and a further Velux style window. With good potential ceiling heights, this large area may hold potential for further accommodation if required and subject to permissions. A portion of the loft space has previously been used as a loft room with a radiator installed.

There may also be potential to extend to the side of the house off the sitting room with a single storey extension for which the owners had permission granted 22 March 2023 (application reference S/HOU/23/0086 for erection of a single storey annex), or for a two storey extension in the same area, subject to planning.

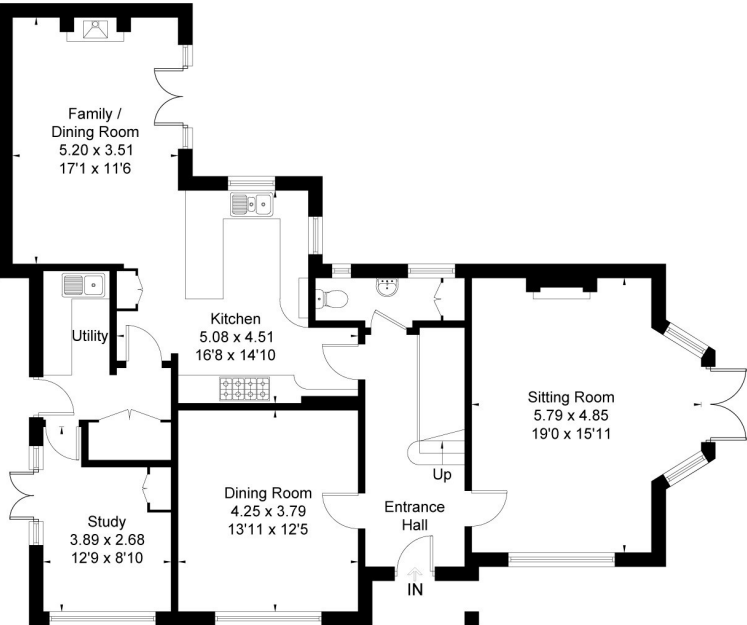
### **OUTSIDE**

The property is approached over a long driveway up to a parking and turning area in front of the house and leading to the double garage. There is a large front garden providing two level areas of lawn and lovely views to the front of the house. There is a sun trap south facing level lawn outside the sitting room while there is also a large south east facing terrace outside the kitchen/family room.

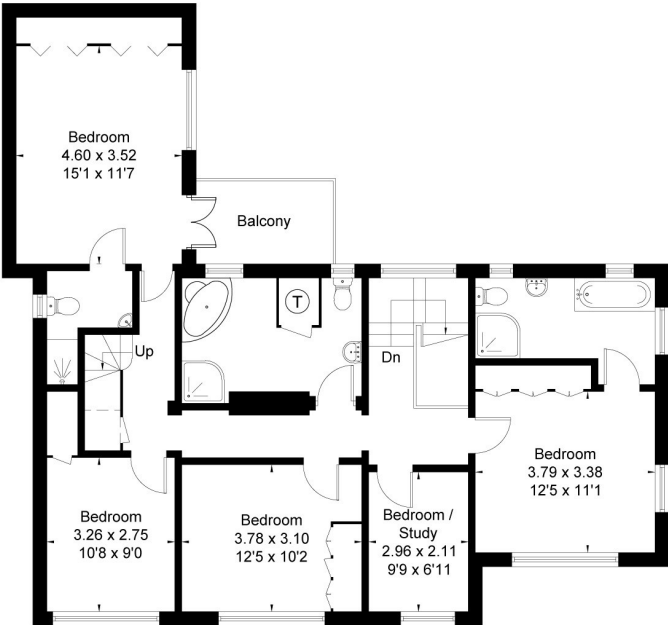
Steps lead up to the rear garden which is mainly lawned and has five apple trees, three plum trees and two pear trees and a number of other specimen trees/shrubs, such as a gingko biloba. There is a greenhouse to the side of the garden. There are further views from the top of the garden over the house.

**SERVICES** All mains services connected. Council Tax Band G.

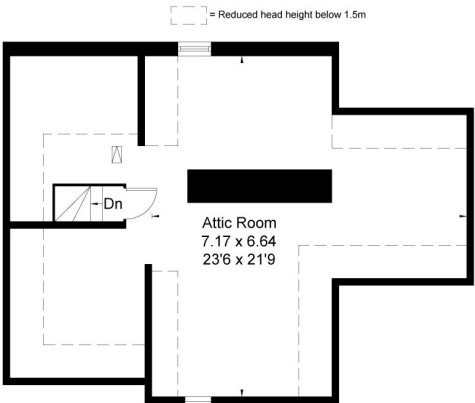
**TENURE** Freehold.



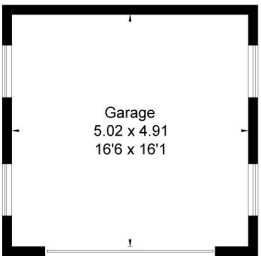
Ground Floor



First Floor



Attic Floor



(Not Shown In Actual Location / Orientation)

Approximate Floor Area = 273.6 sq m / 2945 sq ft (Including Attic)  
Garage = 24.6 sq m / 265 sq ft  
Total = 298.2 sq m / 3210 sq ft



Score	Energy rating	Current	Potential
92+	A		
81-91	B		
69-80	C		80 C
55-68	D	61 D	
39-54	E		
21-38	F		
1-20	G		

**01672 514820**

[www.brearleyandrich.co.uk](http://www.brearleyandrich.co.uk)  
1 London Road, Marlborough,  
Wiltshire, SN8 1PH

These particulars are not an offer or contract or part thereof. Their accuracy is not guaranteed. No statement made in them shall be relied on as a statement or representation of fact and we and the vendors have no responsibility for them. We and our employees have no authority to and do not make or give any representations or warranty concerning this property, any appliances mentioned or general services and any intending purchaser must rely upon an inspection of the property.

**BREARLEY & RICH**  
ESTATE AGENTS



