



CESARE&CO

Home Farm, Manor Road, Rowsham, Buckinghamshire, HP22 4QP

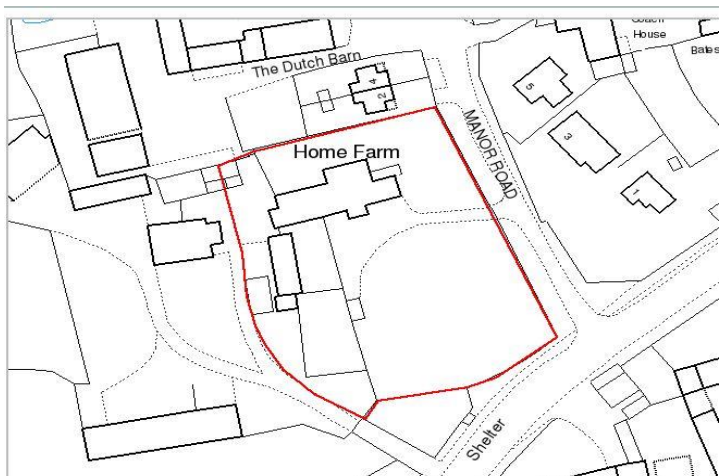
Experience and dedication to beautiful homes

www.cesare.co.uk

CESARE&CO

Home Farm
Rowsham
Buckinghamshire
HP22 4QP





Impressive farmhouse requiring modernisation, incorporating three adjoining cottages and a detached timber framed barn.

TENURE: FREEHOLD

ASKING PRICE: £1,000,000

LOCAL AUTHORITY: Aylesbury Vale District Council

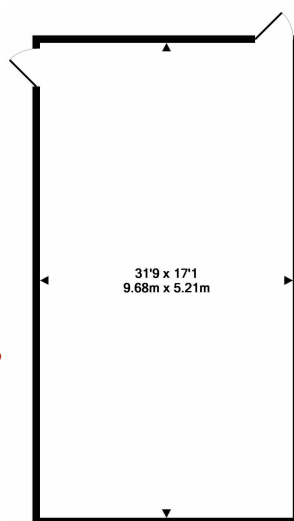
VIEWING: By appointment with Cesare & Co, 48 High Street, Tring, Hertfordshire, HP23 5AG

Tel 01442 827000 Email tring@cesare.co.uk

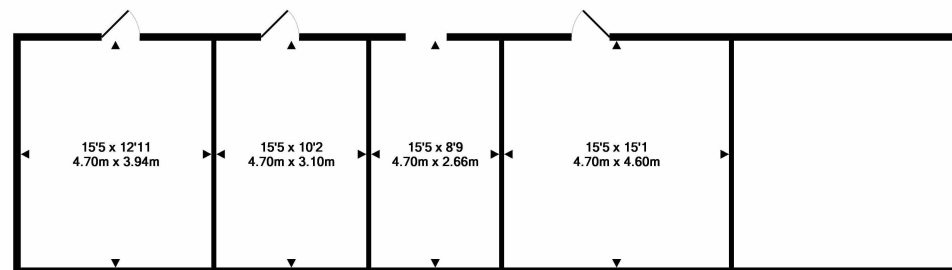
DESCRIPTION : Believed to date back to the Tudor Period this impressive Farmhouse is located in a private tucked away location within the village of Rowsham, just a few miles from Aylesbury/Leighton Buzzard and Tring. Requiring modernisation this delightful home also offers a period timber framed barn dating back to the 18th Century with potential for conversion to a separate dwelling or ancillary accommodation (subject to necessary planning permission). Currently configured as a substantial farmhouse with three adjoining cottages. Set in stunning private grounds of 1 acre. A rare opportunity not to be missed.

SITUATION:

- Aylesbury approximately 4 miles
- Aylesbury Railway Station 4 miles, London Marylebone 56 minutes
- Leighton Buzzard Railway Station 7 miles, London Euston 32 minutes
- Milton Keynes approximately 18 miles
- Tring approximately 9 miles, London Euston from 36 minutes

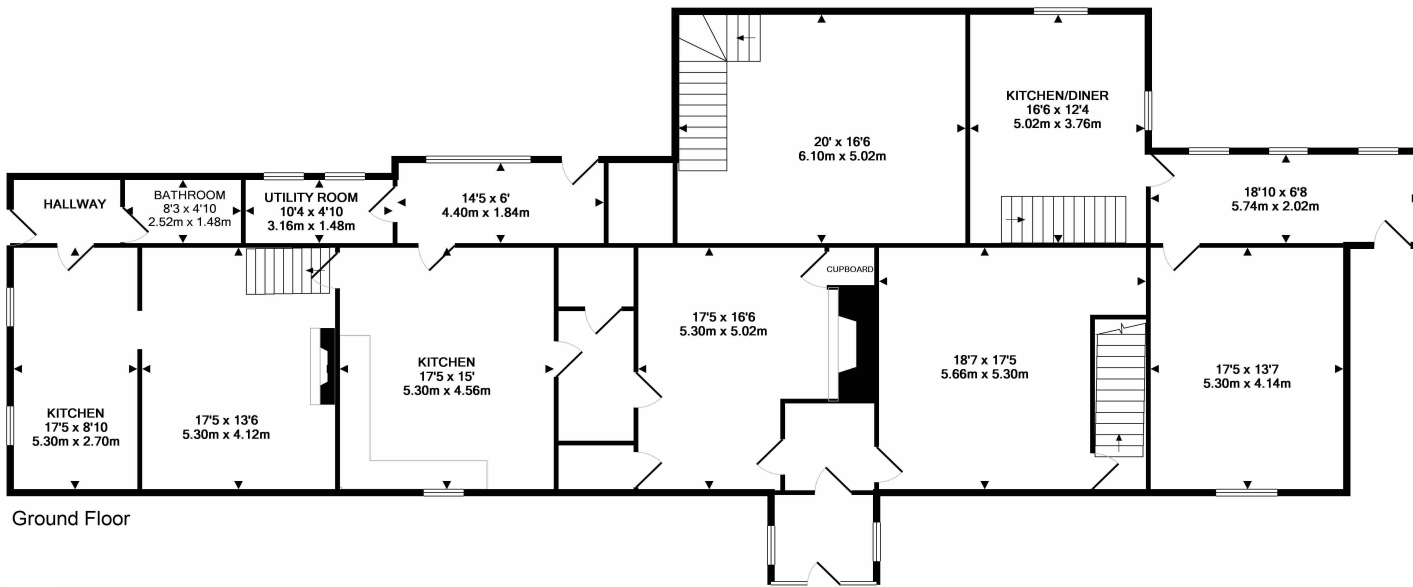


Outbuilding

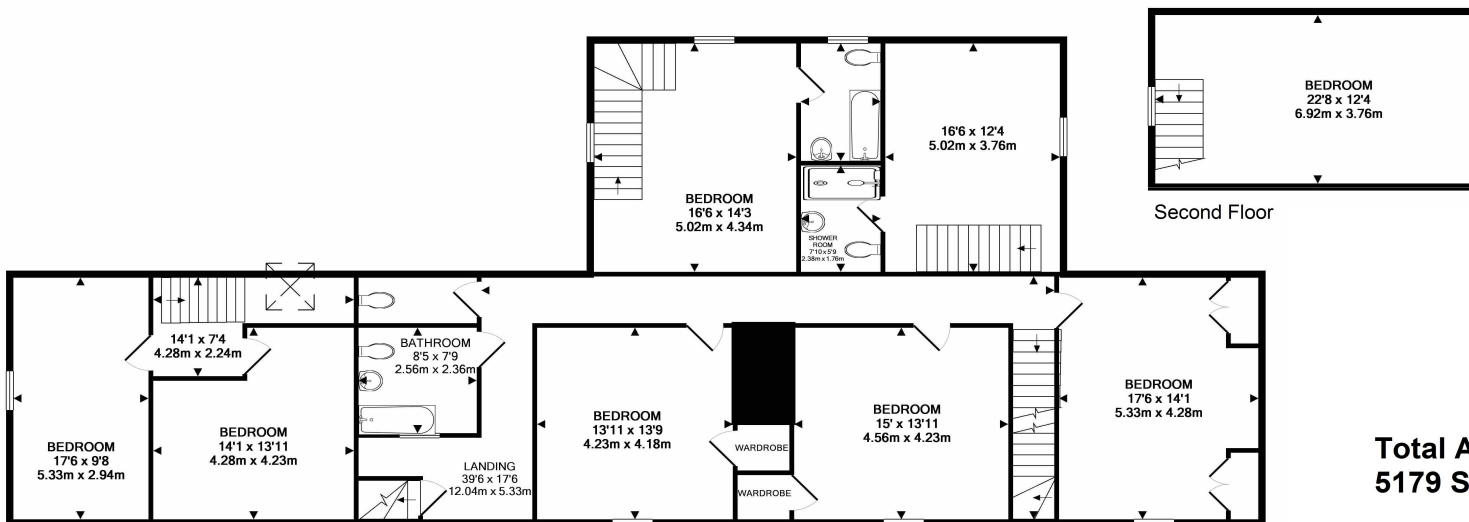


Timber Framed Barn

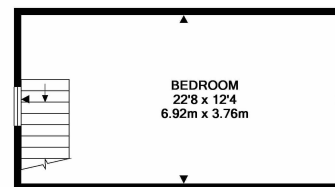
Total Approximate Floor Area 1499 SQ FT 139.3 SQ M



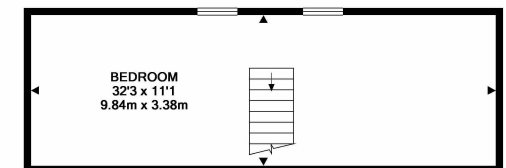
Ground Floor



First Floor



Second Floor



Total Approximate Floor Area
5179 SQ FT 481.2 SQ M

