

11 De Beauvoir Apartments

Rue Cohu - Castel - GY5 7TB

Price £350,000

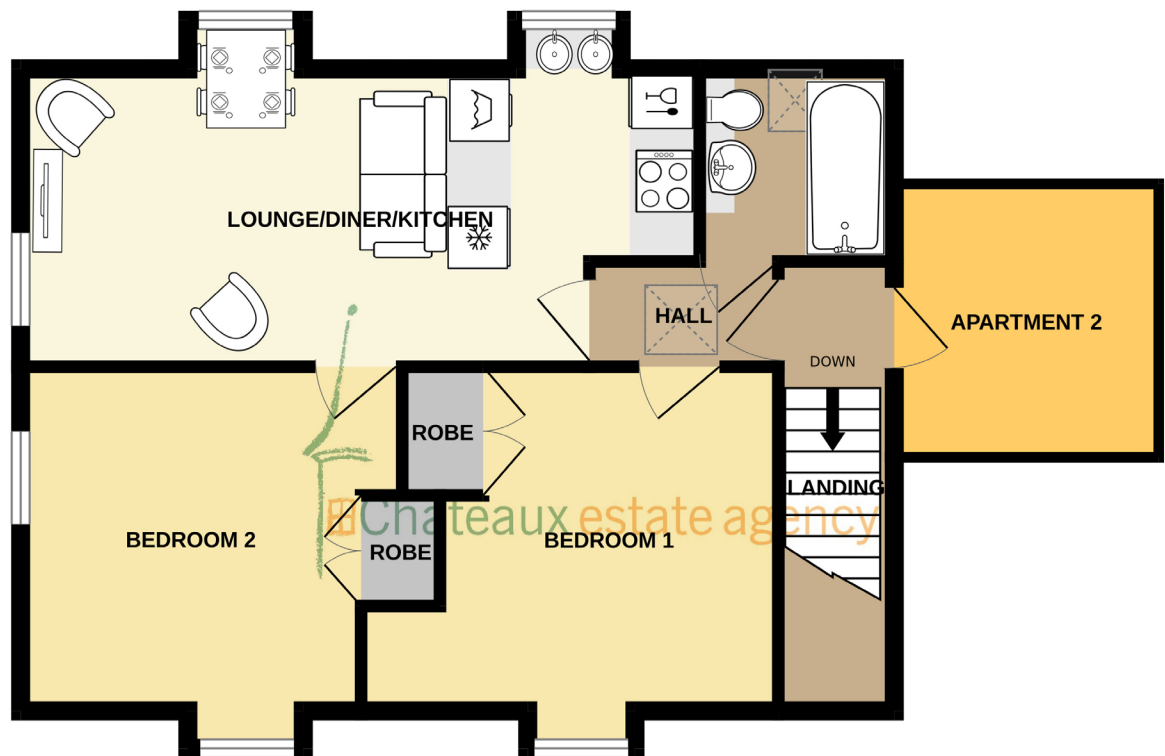


- 2 bedroom first floor apartment.
- Situated in the De Beauvoir development along Rue Cohu a couple of minutes walk from Saumarez Park.
- Communal Gardens.
- Comprises 2 double bedrooms, bathroom and open plan kitchen/living/dining room.
- Parking for 1 car.
- Perry's Guide - Page 15 H1.









FIRST FLOOR

Chateaux Estates are pleased to offer to the market "No.11" De Beauvoir Apartments, situated on the first floor and benefits from 2 double bedrooms, open plan living/kitchen and 3-piece bathroom. In addition, there is a large partly floored attic providing a generous storage facility. The development consists of 3 blocks of 4 apartments surrounded by communal gardens and just a couple of minutes walk from Saumarez Park and parking for 1 car. This property will appeal to many including first time buyers, downsizers and buy to let investors alike. Contact a member of the team here at Chateaux to book your viewings on 244544.

GROUND FLOOR ENTRANCE HALL

Communal entrance hall with staircase to first floor landing.

FIRST FLOOR - APARTMENT 11

HALL 1.75m (5'9") x 1m (3'3")

Doors to bedroom, kitchen/living room and bathroom. Cupboard housing incoming electrics. Hatch through to roof space with pull down ladder to partly floored large roof space providing storage and also housing newly fitted hot water cylinder.

BATHROOM 1.83m (6'0") x 1.78m (5'10")

Bath with shower over and side screen. Fitted unit housing wash hand basin and concealed cistern to WC. Heated towel rail. Velux window to side. Dimplex storage heater.

LOUNGE/KITCHEN/DINER 6.39m (21'0") x 2.83m (9'3")

Kitchen area. Range of fitted units with twin bowl sink units. Bosch slimline dishwasher, Hotpoint hob with extractor fan over. Hotpoint oven, Hotpoint washing machine and under counter fridge. Dormer window to side.

Lounge area. Dormer window to side and gable window to front. Dimplex storage heater. Door to bedroom.

BEDROOM 1 3.9m (12'10") x 3.27m (10'9")

Double bedroom with dormer to side. Built in wardrobe and electric radiator

BEDROOM 2 3.65m (12'0") x 3.27m (10'9")

Dormer window to side and Gable window to front. Electric radiator. Built-in wardrobe.

EXTERNAL

The development consists of 3 blocks of 4 apartments surrounded by communal gardens which are regularly maintained together with parking for 1 car.



SERVICES: Electric: Mains, Gas: Unknown, Water: Mains, Sewerage: Mains, Telephone: Landline, Broadband: Fibre

PRICE INCLUDES: Carpets, Curtains, Light Fittings and Listed Appliances.

LISTED APPLIANCES: Bosch slimline dishwasher, Hotpoint hob with extractor over. Hotpoint oven, Hotpoint washing machine and under counter fridge.

Service Charge: £200 per 6 months

WHAT3WORDS: fridge.giggly.roaring

These particulars are supplied on the understanding that all negotiations and appointments are conducted through this office. Whilst care has been taken with these details we do not guarantee their accuracy, nor do they form any part of any contract.