

Bollengo

3 Apartments De Ville - Berthelot Street - St Peter Port

Price £335,000



REF: 2210

TRP: 61

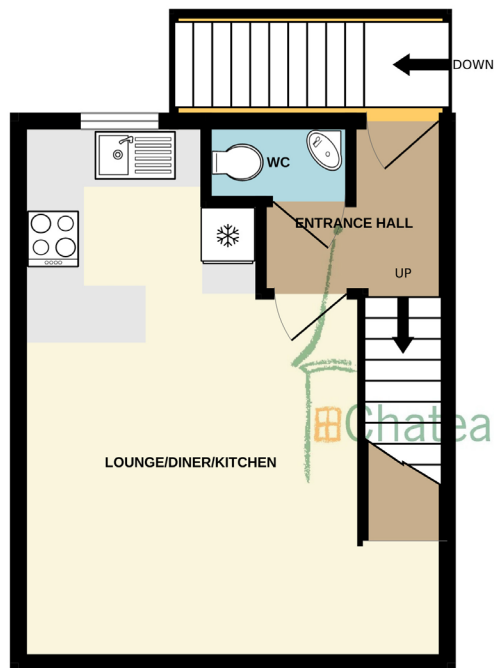


- One bedroom maisonette.
- Situated in St Peter Port.
- Open plan living/dining/kitchen and cloakroom.
- Double bedroom with ensuite shower room.
- Private patio area and allocated parking space.
- Perry's Guide - Page 25 G1.









SECOND FLOOR



THIRD FLOOR

Whilst every attempt has been made to ensure the accuracy of the floorplan contained here, measurements of doors, windows, rooms and any other items are approximate and no responsibility is taken for any error, omission or mis-statement. This plan is for illustrative purposes only and should be used as such by any prospective purchaser. The services, systems and appliances shown have not been tested and no guarantee as to their operability or efficiency can be given.
Made with Metropix ©2024

EXTERNAL STAIRCASE

From the car park which provides a private parking space, there is a concrete staircase leading to a patio garden for the sole use of this apartment together with a metal staircase providing own access to the front door.

ENTRANCE HALL 2m (6'7") x 1.9m (6'3")

uPVC entrance door into hall with doors to WC and kitchen. Staircase to upper floor.

OPEN PLAN LOUNGE/DINING/KITCHEN 5.7m (18'8") x 4.51m (14'10") Max

Open plan style living area with 2 windows to front and 1 to rear. Access to understairs storage cupboard. Kitchen area fitted with range of floor and wall units finished in gloss white with laminate worktop surface and sink. Appliances include a Belling oven, hob and extractor hood and fridge.

UPPER FLOOR

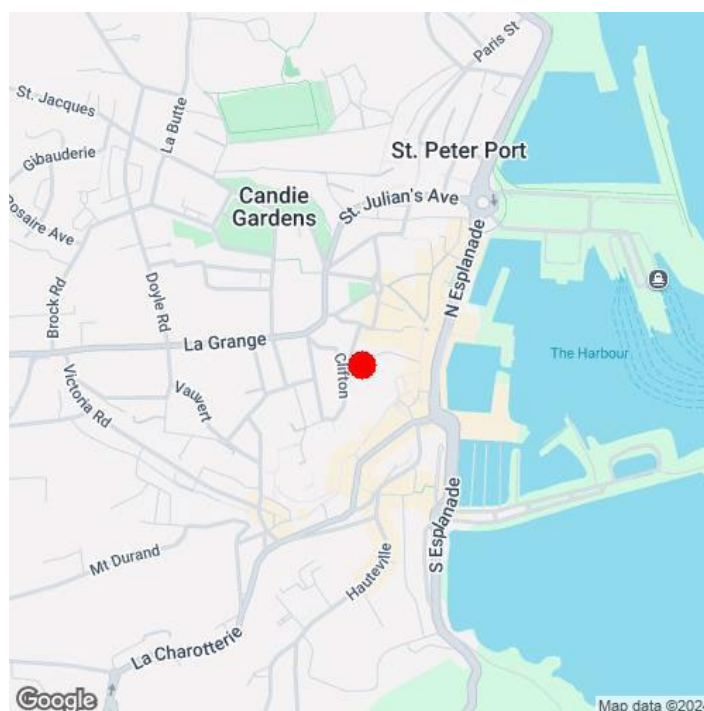
BEDROOM 3.77m (12'4") x 3.53m (11'7")

Double bedroom with 2 windows to front and 1 to rear. Cupboard housing Vaillant gas boiler. Hotpoint washing machine. Cupboard over stairs and loft hatch. Door to ensuite shower room.

EN SUITE SHOWER ROOM. 2.38m (7'10") x 1.8m (5'11")

3 piece suite including shower cubicle, WC and wash basin. Window to rear.

This one bedroom maisonette is part of a small purpose built block of just 4 apartments situated in the heart of St Peter Port just a short stroll from the main shopping areas. The accommodation comprises of an open plan style, living/dining/kitchen and cloak room on one level with a double bedroom and ensuite shower room on the upper level. The property also benefits from its own entrance, private patio area and parking space. Great for owner occupier or investment property. Call Chateaux on 244544 to view.



SERVICES: Electric: Mains Supply, Gas: Mains Supply, Water: Mains Supply, Sewerage: Mains Supply, Telephone: Unknown, Broadband: Unknown

PRICE INCLUDES: Carpets, Curtains, Light Fittings and Listed Appliances.

LISTED APPLIANCES: Belling oven, hob and extractor hood and fridge. Hotpoint washing machine.

These particulars are supplied on the understanding that all negotiations and appointments are conducted through this office. Whilst care has been taken with these details we do not guarantee their accuracy, nor do they form any part of any contract.