

7 Tokoroa Apartments

Grande Rue - Vale - GY3 5ED

Price £395,000



REF: 2331

TRP: 93



- Spacious 2 bedroom apartment.
- Great location between Bordeaux and Beaucette.
- Lounge/diner, kitchen & bathroom.
- Well maintained development.
- Communal gardens & parking for 2 cars.
- Perry's Guide - Page 7 G4.





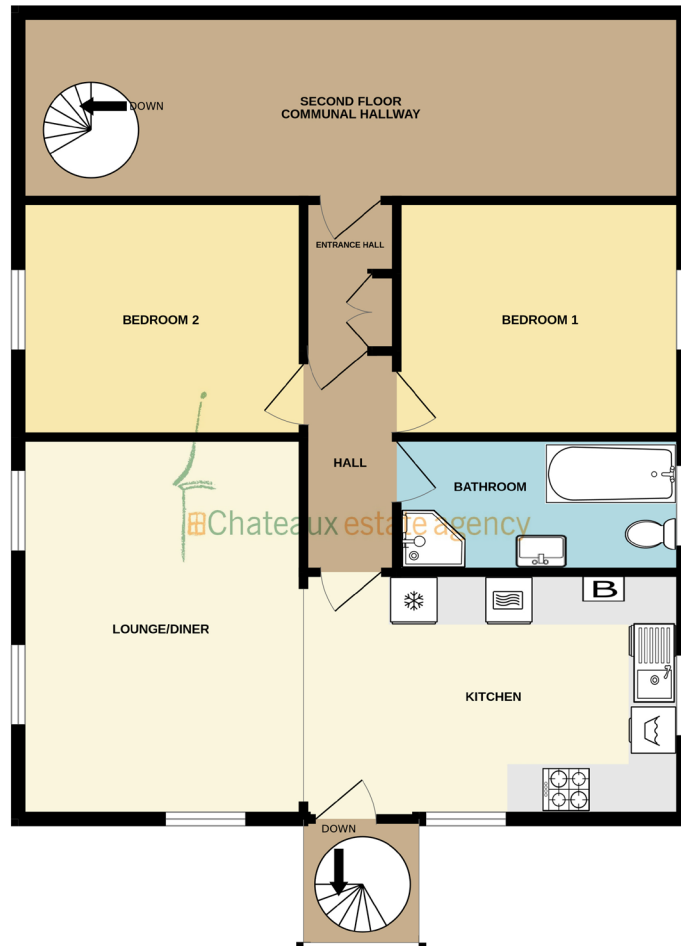








SECOND FLOOR



Whilst every attempt has been made to ensure the accuracy of the floorplan contained here, measurements of doors, windows, rooms and any other items are approximate and no responsibility is taken for any error, omission or mis-statement. This plan is for illustrative purposes only and should be used as such by any prospective purchaser. The services, systems and appliances shown have not been tested and no guarantee as to their operability or efficiency can be given.

Made with Metropix ©2025

7 Tokoroa Apartments is a spacious second floor apartment situated mid way between Bordeaux Harbour and Beaucette Marina. The generous accommodation comprises of lounge/diner, 2 double bedrooms, separate family bathroom and well equipped kitchen. This development is very well maintained and has the added benefit of communal gardens and dedicated parking for 2 cars. To view this well appointed apartment which is in a great location call Chateaux today on 244544.

ENTRANCE LOBBY

Storage cupboard and door to inner hall.

INNER HALL

Shallow cupboard. Radiator.

KITCHEN 4.75m (15'7") x 3.01m (9'11")

Fitted wall and base units in Cream with contrasting worktops over incorporating a stainless steel single bowl sink and drainer unit with tiled splashbacks. Appliances include Hotpoint eye level double oven & grill, free standing Indesit washer/dryer, free standing slimline Bosch dishwasher, Vaillant gas boiler and integrated fridge/freezer. Dormer window to side and window and door to rear leading out to spiral staircase. Concertina double doors to lounge/diner. Radiator.

LOUNGE/DINER 4.81m (15'9") x 3.63m (11'11")

Great size room, perfect to relax and dine in with two dormer windows to side and one window to rear. Concertina double doors to kitchen. 2 radiators.

BATHROOM 3.61m (11'10") x 1.66m (5'5")

Fitted with a four piece suite comprising bath, separate shower cubicle, wash hand basin set in vanity unit with mirror and shaver light over and w.c. Dormer window to side. Radiator.

BEDROOM 1 3.61m (11'10") x 2.98m (9'9")

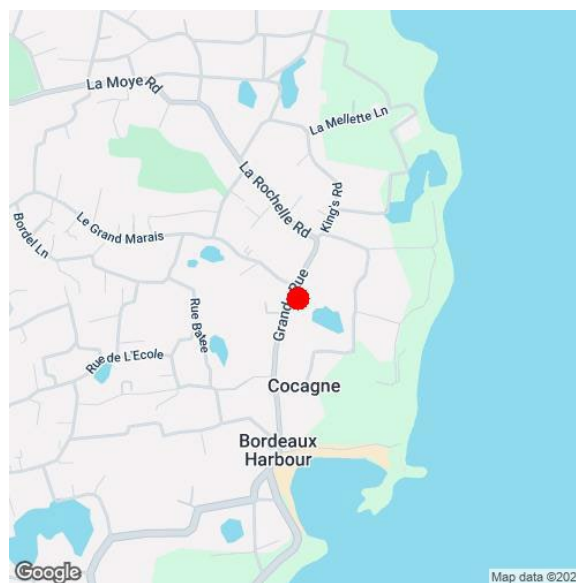
Double bedroom with dormer window to side. Radiator.

BEDROOM 2 3.6m (11'10") x 2.98m (9'9")

Double bedroom with dormer window to side. Radiator.

EXTERIOR

Communal gardens to front, a bike shed to side and allocated parking for 2 cars to rear.



SERVICES: Electric: Mains, Gas: Mains, Water: Mains, Sewerage: Mains, Telephone: Landline, Broadband: FTTP

PRICE INCLUDES: Carpets, Curtains, Light Fittings and Listed Appliances.

LISTED APPLIANCES: Hotpoint eye level double oven & grill, free standing Indesit washer/dryer, free standing slimline Bosch dishwasher and integrated fridge/freezer.

WHAT3WORDS: sing.savers.saints

These particulars are supplied on the understanding that all negotiations and appointments are conducted through this office. Whilst care has been taken with these details we do not guarantee their accuracy, nor do they form any part of any contract.