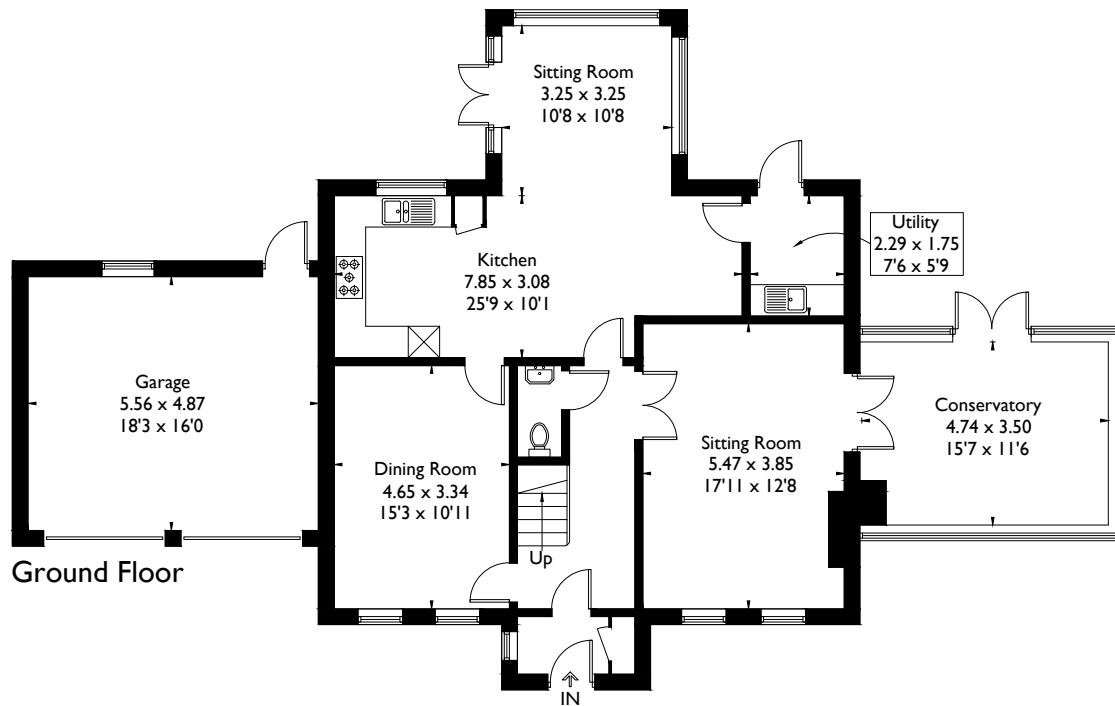
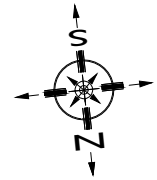


41 Granville Road, Southport, PR8 2HU

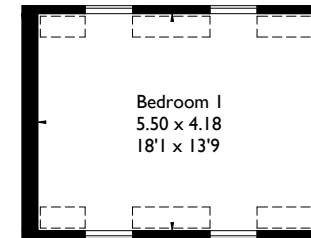
Approximate Gross Internal Area = 265.2 sq m / 2855 sq ft

Garage = 27.0 sq m / 291 sq ft

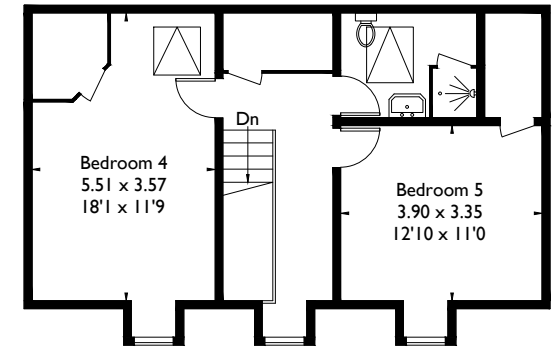
Total = 292.2 sq m / 3145 sq ft



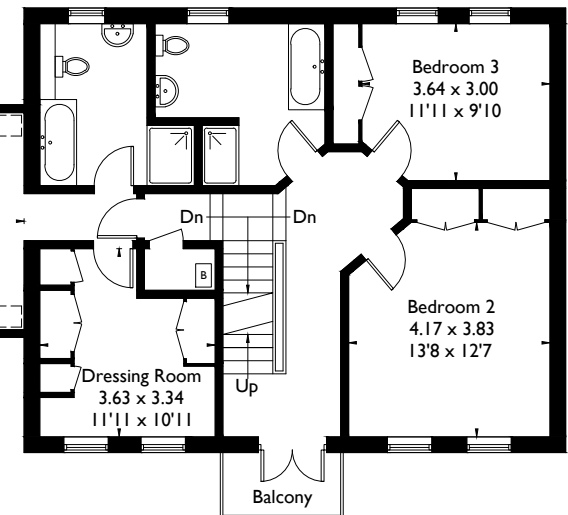
--- = Reduced headroom below 1.5m / 5'0"



First Floor



Second Floor



FLOORPLANZ © 2016 0845 6344080 Ref: 166694

This plan is for layout guidance only. Drawn in accordance with RICS guidelines. Not drawn to scale unless stated. Windows & door openings are approximate. Whilst every care is taken in the preparation of this plan, please check all dimensions, shapes & compass bearings before making any decisions reliant upon them.